

CDLA-L

HAZARDOUS LOCATION LED LINEAR LUMINAIRE

Class I, Division 1, Groups C, D

Class I, Division 2, Groups A, B, C, D

Non recessed Marine luminaires, outside type (salt water)

The CDLA-L Hazardous Location LED linear luminaire is designed for installations where moisture, dirt, dust, corrosion and vibration may be present. The CDLA-L is also NEC/CEC certified to be used in hazardous environments where there is presence of flammable vapors or gases.

FEATURES AND SPECIFICATIONS

• Construction

Housing

Rugged and resilient housing made of a copper-free aluminum, corrosion resistant casting, with separated driver compartment for improved thermal management. All exposed fasteners are quality stainless steel. Available in a grey casting color and a superior electrostatic powder coating.

Temperature ratings

Based on the surface temperature of the fixture;

- Class I Division 1, Group C, D is rated T6
- Class I Division 2, Group A, B, C, D is rated T3C

Ambient operating temperature

-40°C to +60°C

Ambient operating humidity

10% ~ 90% RH

Lens and Optics

This luminaire is outfitted of a glass lens that comes in a transparent or a diffuse finish. Beam angles options of 60° and 110° are available as well as a type II distribution pattern.

• Electrical

Available in either S1 (40 W) or S2 (80 W) configurations with a lumen per watt ratio up to 133 lm/W. Driver input voltage is 120-277 V 50/60 Hz or 347 V 50/60 Hz with a power factor >0.95. Durable high LEDs with solder-less board connections for shock and vibration resistance. The CDLA-L is offered in either 3 000, 4 000 and 5 000 K, with a color rendering index (CRI) >70.

• NEC/CEC Standards

NEC500/CEC Section 18: Existing plants

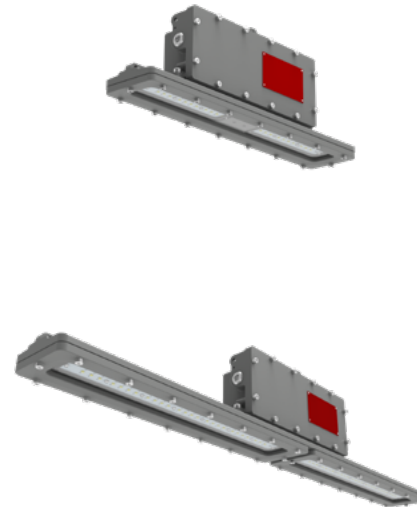
- Hazloc B :
 - Class I, Division 1, Groups C, D
 - Class I, Division 2, Groups A, B, C, D

NEC505/CEC Section 18 Zones: New plants

- Hazloc B
 - Class I, Zone 1, Group IIB
 - Class I, Zone 2, Group IIC

• Compliances

- Meets requirements of ICES-005 issue 4 for class A products
- 5G vibration resistant in compliance with IEC60598-1 standard, CL-4.20
- IP66
- UL1598A
- UL1598
- UL8750



OVERVIEW

Light source	LED
Watts (W)	40, 80
Lumen output (lm)	3 511 - 10 456
Efficacy (lm/W)	92 - 133
Color temperature (K)	3 000, 4 000, 5 000
CRI	>70
Weight (lbs)	12.1 – 16.7



Not all products are qualified on the DLC QPL. To view our DLC qualified products, please consult the DLC Qualified Products List at www.designlights.org/search.

CDLA-L WITH EMERGENCY BACKUP

HAZARDOUS LOCATION LED LINEAR LUMINAIRE

Class I, Division 1, Groups C, D

Non recessed Marine luminaires, outside type (salt water)

The CDLA-L with emergency backup Hazardous Location LED linear luminaire is designed for installations where moisture, dirt, dust, corrosion and vibration may be present.

The CDLA-L with emergency backup is also NEC/CEC certified to be used in hazardous environments where there is presence of flammable vapors or gases.

FEATURES AND SPECIFICATIONS

• Construction

Housing

Rugged and resilient housing made of a copper-free aluminum, corrosion resistant casting, with separated driver compartment for improved thermal management. All exposed fasteners are quality stainless steel. Available in a grey casting color and a superior electrostatic powder coating.

Temperature ratings

Based on the surface temperature of the fixture ;

- Class I Division 1, Group C, D is rated T6

Ambient operating temperature

-20° to +45° C

Ambient operating humidity

10% ~ 90% RH

Battery

- 6 W (606 to 841 lumens)
- Discharge time : 90 min
- Charge time : 24 hours
- High-Temperature, Maintenance-Free
- Nickel-Cadmium Battery,
7 to 10 years life expectancy

Lens and Optics

This luminaire is outfitted of a glass lens that comes in a transparent or a diffuse finish. Beam angles options of 60° and 110° are available as well as a type II distribution pattern.

• Electrical

Available in S2 (80 W) configuration with a lumen per watt ratio up to 130 lm/W. Driver input voltage is 120-277 V 50/60 Hz or 347 V 50/60 Hz. Power factor >0.95. Durable high LEDs with solder-less board connections for shock and vibration resistance. The CDLA-L with emergency backup is offered in either 3 000, 4 000 and 5 000 K, with a color rendering index (CRI) >70.

• NEC/CEC Standards

NEC500/CEC Section 18: Existing plants

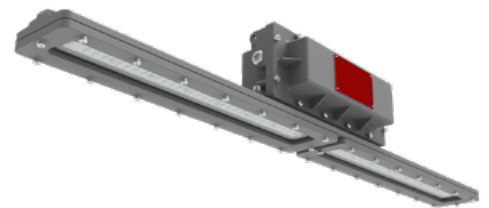
- Hazloc B :
- Class I, Division 1, Groups C, D

NEC505/CEC Section 18 Zones: New plants

- Hazloc B
- Class I, Zone 1, Group IIB

• Compliances

- Meets requirements of ICES-005 issue 4 for class A products
- 5G vibration resistant in compliance with IEC60598-1 standard, CL-4.20
- IP66
- UL924
- UL1598A
- UL1598
- UL8750



OVERVIEW

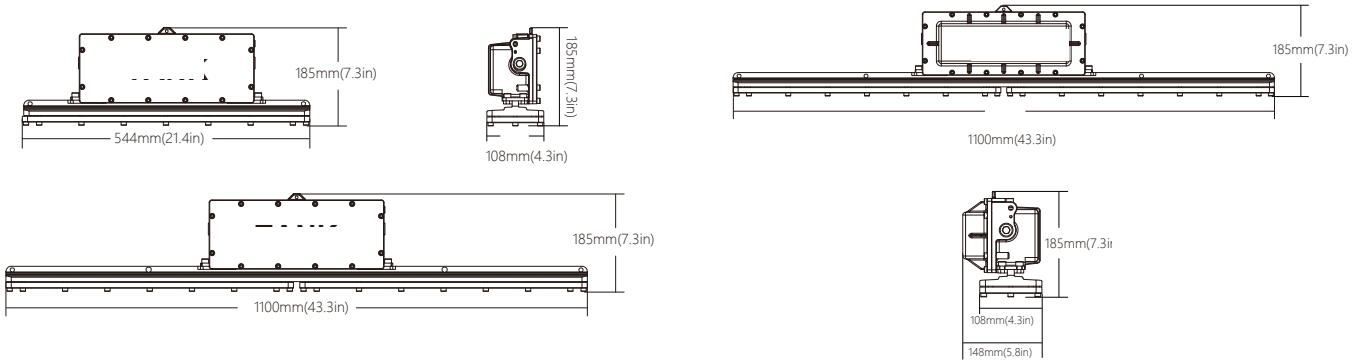
Light source	LED
Watts (W)	80
Lumen output (lm)	7 604 - 10 456
Efficacy (lm/W)	94 - 130
Color temperature (K)	3 000, 4 000, 5 000
CRI	>70
Weight (lbs)	12.1 - 16.7



DIMENSIONS

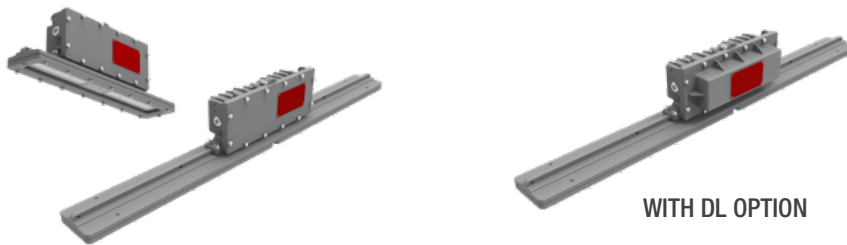
Part number	Net weight (lbs)	Dimensions (LxWxH) (in)
CDLA-LS1	16.1	21.4 x 4.3 x 7.3
CDLA-LS2	23.8	43.3 x 4.3 x 7.3

Part number	Net weight (lbs)	Dimensions (LxWxH) (in)
CDLA-LS2 (DL)	26.9	43.3 x 5.8 x 7.3



MOUNTING

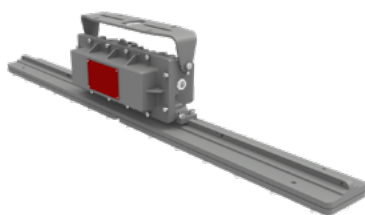
PENDANT (STANDARD)



ACCESSORIES REQUIRED FOR OPTIONAL MOUNTING

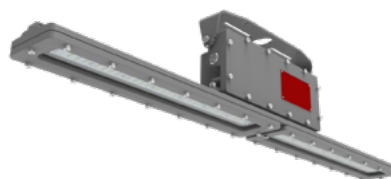
CEILING MOUNT

BKT761-LN



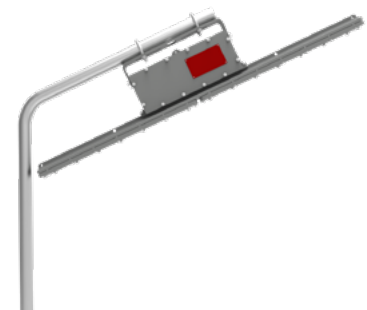
WALL MOUNT

BKT761-LN



POLE MOUNT

BKT775 + BKT761-LN



Data is based upon tests performed in a controlled environment. Actual performance can vary depending on operating conditions. All products are subject to change or may be discontinued any time without notice.

ORDERING GUIDE

CDLA	L			B	/			
Series	Lamp type	Lumen package	Volts (V)	Hazloc	Color temp. (K)	Beam angle	Lens option	
CDLA	L - LED	S1 - Refer to the S2 - technical specifications table for details	W - 120-277 H - 347	B - Class I Division 1, Class I Division 2	3K - 3 000 4K - 4 000 5K - 5 000	I - 60° J - 110° K - Type II	D - Diffuse glass ¹ T - Transparent glass	

¹ Only available with the 110° optic.

ORDERING GUIDE - WITH EMERGENCY BACKUP

CDLA	L	S2	W	B	/			DL
Series	Lamp type	Lumen package	Volts (V)	Hazloc	Color temp. (K)	Beam angle	Lens option	Option
CDLA	L - LED	S2 - Refer to the technical specifications table for details	W - 120-277	B - Class I Division 1	3K - 3 000 4K - 4 000 5K - 5 000	I - 60° J - 110° K - Type II	D - Diffuse glass ¹ T - Transparent glass	DL - Emergency backup ²

¹ Only available with the 110° optic.

² External test switch supplied by others.

ACCESSORIES (order separately)

Part number	Type
HAR1117	Stainless steel safety kit
BKT775	Stanchion mount pipe clamp ¹
BKT761-LN	U-bracket

¹ Include 2 pipes per box.



HAR1117
Stainless steel safety kit



BKT775
Stanchion mount pipe clamp



BKT761-LN
U-bracket

Data is based upon tests performed in a controlled environment. Actual performance can vary depending on operating conditions. All products are subject to change or may be discontinued any time without notice.

TECHNICAL SPECIFICATION TABLE

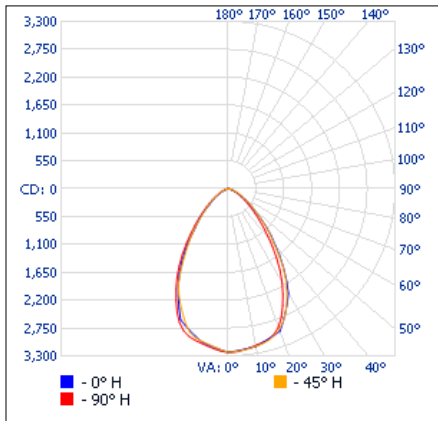
Lumen package	Optics	Lens type	Volts (VAC)	LED current (mA)	# of LEDs	Watts (W)	CRI	Lumens output (lm)	Efficacy (lm/w)	Life L70 (hrs)	Tested hours LM-80 (hrs)	Power factor	THD (%)				
3 000 K																	
S1	60°	TRANSPARENT	120-277	475	26	40	70	4 510.20	112.76	≥50000	9000	0.95	17				
			347														
			120-277														
	110°		347					4 436.25	116.35								
			120-277											4 485.21	112.13		
			347														
S2	60°	TRANSPARENT	120-277	500	52	80	70	9 732.99	121.66	≥50000	9000	0.95	13				
			347														
			120-277														
	110°		347					9 546.14	117.11								
			120-277											9 216.50	115.21		
			347														
S1	110°	DIFFUSE	120-277	475	26	40	70	3 511.23	92.38	≥50000	9000	0.95	17				
			347														
S2	110°		DIFFUSE	120-277	500	52		80	7 604.9				93.5	≥50000	9000	0.95	13
				347													
				120-277													
				347													
4 000 K																	
S1	60°	TRANSPARENT		120-277	475	26	40	70	4 614.69	115.37	≥50000	9000	0.95				17
			347														
			120-277														
	110°		347	4 472.25					117.97								
			120-277							4 934.89				123.37			
			347														
S2	60°	TRANSPARENT	120-277	500	52	80	70	9 742.32	121.78	≥50000	9000	0.95	13				
			347														
			120-277														
	110°		347					9 554.71	119.27								
			120-277											9 849.62	123.12		
			347														
S1	110°	DIFFUSE	120-277	475	26	40	70	3 511.15	93.02	≥50000	9000	0.95	17				
			347														
S2	110°		DIFFUSE	120-277	500	52		80	7 520.41				94.17	≥50000	9000	0.95	13
				347													
				120-277													
				347													
5 000 K																	
S1	60°	TRANSPARENT		120-277	475	26	40	70	5 356.11	133.90	≥50000	9000	0.95				17
			347														
			120-277														
	110°		347	4 800.00					120.00								
			120-277							5 118.43				123.91			
			347														
S2	60°	TRANSPARENT	120-277	500	52	80	70	10 456.80	130.71	≥50000	9000	0.95	13				
			347														
			120-277														
	110°		347					9 600.00	120.00								
			120-277											10 249.5	128.82		
			347														
S1	110°	DIFFUSE	120-277	475	26	40	70	3 897.10	97.59	≥50000	9000	0.95	17				
			347														
S2	110°		DIFFUSE	120-277	500	52		80	8 035.08				98.59	≥50000	9000	0.95	13
				347													
				120-277													
				347													

Data is based upon tests performed in a controlled environment. Actual performance can vary depending on operating conditions. All products are subject to change or may be discontinued any time without notice.

PHOTOMETRIC DATA¹

CDLA-LS1-W-B-4K-I-T • 4 615.7 lm

Polar candela distribution



Zonal lumen summary

Zone	Lumens	% Fixture
0-30	2 281.5	49.4%
0-40	3 308.7	71.7%
0-60	4 365.8	94.6%
60-90	249.9	5.4%
0-90	4 615.7	100%

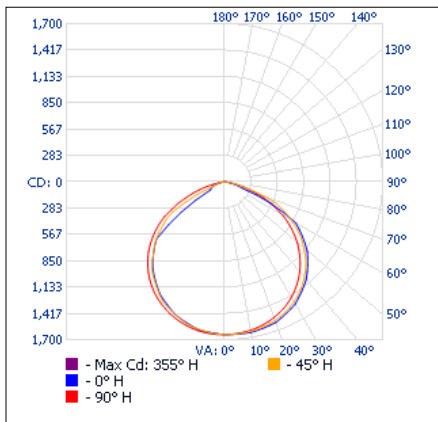
Illuminance at a distance

Center beam fc	Beam width	
	Vertical	Horizontal
8.3'	46.8	12.0'
16.7'	11.6	24.1'
25.0'	5.16	36.1'
33.3'	2.91	48.1'
41.7'	1.86	60.2'
50.0'	1.29	72.2'

Vert. spread: 71.6°
Horiz. spread: 70.1°

CDLA-LS1-W-B-4K-J-T • 4 472.8 lm

Polar candela distribution



Zonal lumen summary

Zone	Lumens	% Fixture
0-30	1 302.5	29.1%
0-40	2 157.2	48.2%
0-60	3 827.0	85.6%
60-90	645.8	14.4%
0-90	4 472.8	100%

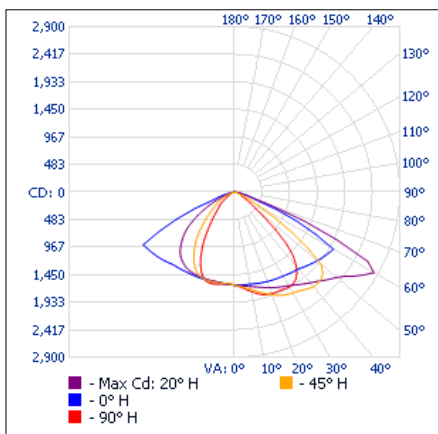
Illuminance at a distance

Center beam fc	Beam width	
	Vertical	Horizontal
8.3'	23.9	24.9'
16.7'	5.89	50.1'
25.0'	2.63	75.0'
33.3'	1.48	99.9'
41.7'	0.95	125.0'
50.0'	0.66	149.9'

Vert. spread: 112.6°
Horiz. spread: 114.4°

CDLA-LS1-W-B-4K-K-T • 4 935.5 lm

Polar candela distribution



Zonal lumen summary

Zone	Lumens	% Fixture
0-30	1 434.4	29.1%
0-40	2 439.0	49.4%
0-60	4 365.6	88.5%
60-90	569.9	11.5%
0-90	4 935.5	100%

Illuminance at a distance

Center beam fc	Beam width	
	Vertical	Horizontal
8.3'	23.7	36.8'
16.7'	5.85	74.0'
25.0'	2.61	110.8'
33.3'	1.47	147.6'
41.7'	0.94	184.9'
50.0'	0.65	221.7'

Vert. spread: 131.4°
Horiz. spread: 32.4°

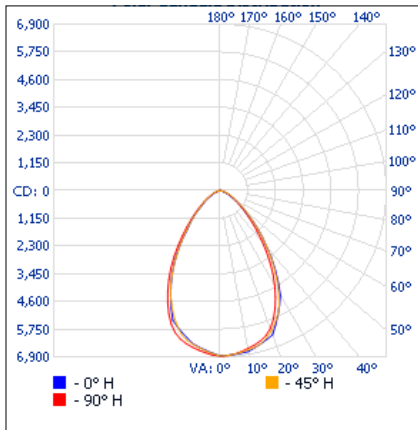
¹ Complete IES files available on our website.

Data is based upon tests performed in a controlled environment. Actual performance can vary depending on operating conditions. All products are subject to change or may be discontinued any time without notice.

PHOTOMETRIC DATA¹ (CONTINUED)

CDLA-LS2-W-B-4K-I-T • 9 744.5 lm

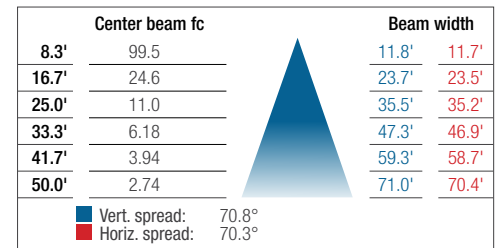
Polar candela distribution



Zonal lumen summary

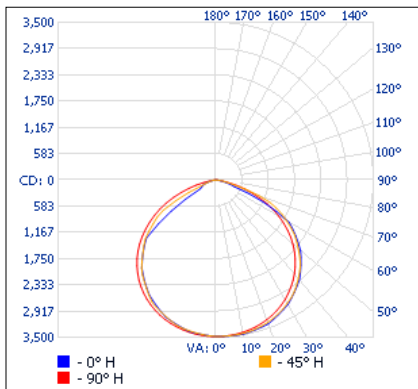
Zone	Lumens	% Fixture
0-30	4 818.2	49.4%
0-40	6 981.6	71.7%
0-60	9 215.5	94.6%
60-90	528.9	5.4%
0-90	9 744.5	100%

Illuminance at a distance



CDLA-LS2-W-B-4K-J-T • 9 555.8 lm

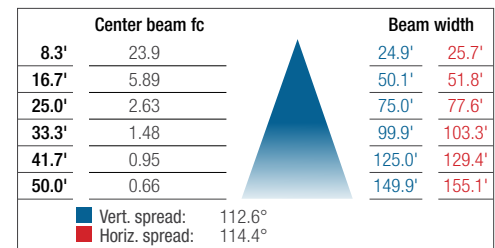
Polar candela distribution



Zonal lumen summary

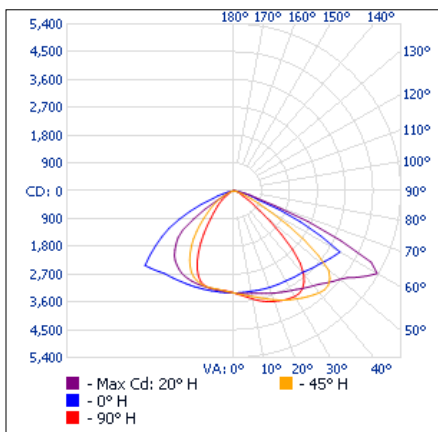
Zone	Lumens	% Fixture
0-30	2 761.3	28.9%
0-40	4 577.4	47.9%
0-60	8 143.7	85.2%
60-90	1 412.2	14.8%
0-90	9 555.8	100%

Illuminance at a distance



CDLA-LS2-W-B-4K-K-T • 9 850.4 lm

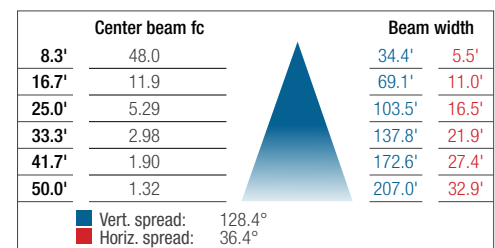
Polar candela distribution



Zonal lumen summary

Zone	Lumens	% Fixture
0-30	2 868.0	29.1%
0-40	4 900.3	49.7%
0-60	8 774.9	89.1%
60-90	1 075.5	10.9%
0-90	9 850.4	100%

Illuminance at a distance



¹ Complete IES files available on our website.

Data is based upon tests performed in a controlled environment. Actual performance can vary depending on operating conditions. All products are subject to change or may be discontinued any time without notice.