



HAZARDOUS LOCATION LIGHTING



4 HAZARDOUS LOCATION LIGHTING

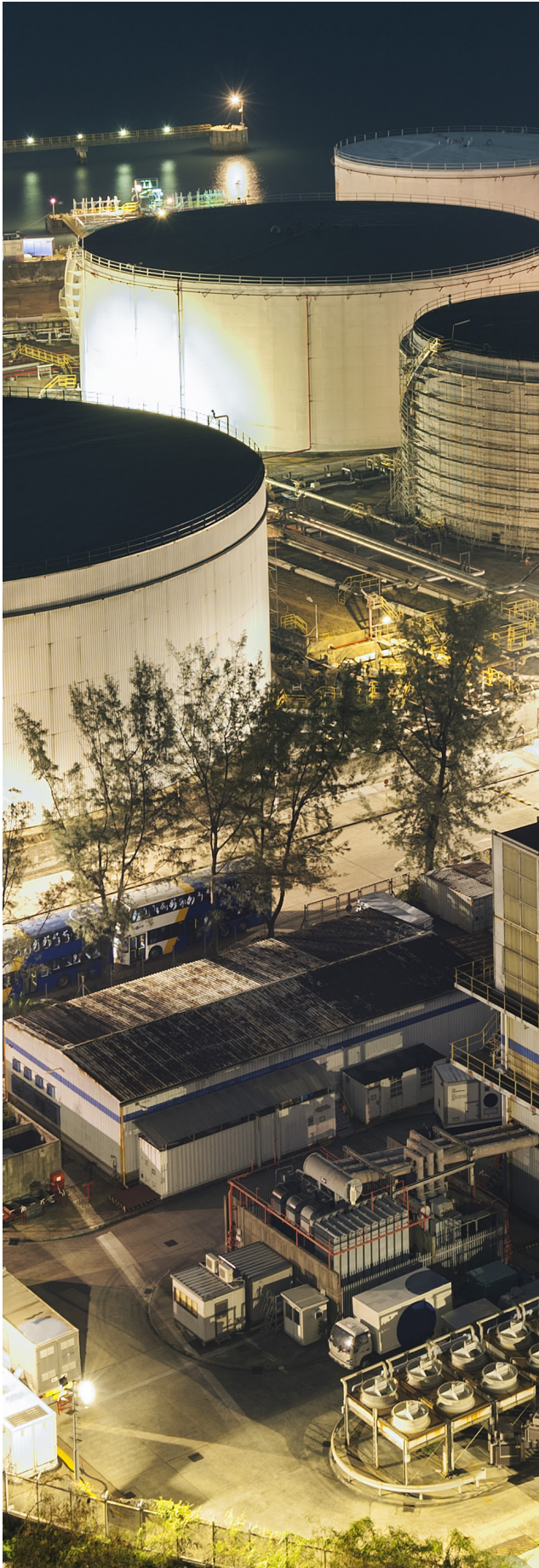
Hazardous Classes & Divisions, Gas & Dust Groups, Temperature Classifications

7 LUMINAIRES

Multi-mount, Flood, Linear, Vapor Tight, High Bay

39 EMERGENCY LIGHTING

Running Man, Exit Signs, Battery Units, Remote Fixtures



Hazardous Location Lighting

A hazardous area (also known as a potentially explosive atmosphere) is an environment that consists of air containing any concentrations of flammable gases, vapours, mists, liquids, combustible dusts or even small fibers that are potentially explosive in nature. Situations which involve the processes of production, transformation, delivery and stocking of flammable substances commonly produce potentially explosive environments.

Typical industries include: Oil & Gas, Petrochemical Refining & Processing, Fuel Storage, Chemical Manufacturing, and Power Generation. Other industries include: Car Manufacturing, Water Treatment, Pharmaceutical, Distilleries, Food Manufacturers, Aviation, Military, and Blast & Paint.

However, many companies don't realize dust can also create hazardous areas, and places such as food and beverage manufacturers, plastics factories, flour mills, recycling operations and grain handling & storage also need to ensure any potential hazardous areas are classified correctly.

Electrical equipment intended to be installed in such environments must be specially designed and tested to meet a range of requirements that together ensure the safety of personnel and avoid potentially dangerous situations resulting from the equipment's reaction to its surroundings. Special enclosures, wiring, electrical components, and structural integrity must be used for safety purposes.



Hazardous Classes & Divisions

CLASSES

Class defines the general nature (or properties) of the hazardous material in the surrounding

CLASS I

Hazardous because flammable gases or vapours are present in the air in quantities sufficient to produce explosive or ignitable mixtures

CLASS II

Hazardous because combustible or conductive dusts are present

CLASS III

Hazardous because ignitable fibers or flying's are present, but not likely to be in suspension in sufficient quantities to produce ignitable mixtures

DIVISIONS

Division defines the probability of the hazardous material being present in an ignitable concentration in the surrounding atmosphere

DIVISION 1

The substance referred to by class is present during normal conditions

DIVISION 2

The substance referred to by class is present only in abnormal conditions, such as container failure or system breakdown

Gas & Dust Groups

Explosive atmospheres have different chemical properties that affect the likelihood and severity of an explosion. Such properties include flame temperature, minimum ignition energy, upper and lower explosive limits, and molecular weight.

Every substance has a differing combination of properties but it is found that they can be ranked into similar ranges, simplifying the selection of equipment for hazardous areas. Each chemical gas or vapour used in industry is classified into a gas group.

Area	Group	Representative Materials
Class I, Division 1 & 2	A	Acetylene
	B	Hydrogen
	C	Ethylene
	D	Propane
Class II, Division 1 & 2	E	Metal dusts, such as magnesium
	F	Carbonaceous dusts, such as carbon & charcoal
	G	Non-conductive dusts, such as flour, grain, wood & plastic
Class III, Division 1 & 2	None	Ignitable fibers/flying's, such as cotton lint, flax & rayon

Temperature Classifications

Another important consideration is the temperature classification of the electrical equipment.

The following table tells us, for example, that the surface temperature of a piece of electrical equipment with a temperature classification of T3 will not rise above 200 °C.

NORTH AMERICA (NEC) °C	
T1 - 450	T3A - 180
T2 - 300	T3B - 165
T2A - 280	T3C - 160
T2B - 260	T4 - 135
T2C - 230	T4A - 120
T2D - 215	T5 - 100
T3 - 200	T6 - 85

CXM

HAZARDOUS LOCATION MULTI MOUNT LUMINAIRE

Class I, Division 1, Groups B, C, D

Class I, Division 2, Groups A, B, C, D

Class II, Division 1, Groups E, F, G

Class III

Non recessed marine luminaires, outside type (salt water)

The CXM Hazardous Location LED luminaire is designed for installations where moisture, dirt, dust, corrosion and vibration may be present or in NEMA 3 and 4X locations where wind, water, snow or high ambient temperatures can be expected. The CXM can be used in locations made hazardous by the presence of flammable vapors or gases or combustible dusts as defined by the NEC and IEC.

FEATURES AND SPECIFICATIONS

• Construction

Housing

Rugged and resilient housing made of a copper-free aluminum corrosion resistant casting with separated driver compartment for improved thermal management. All exposed fasteners are quality stainless steel as well as high temperature quality silicone gasketing. Available in a grey casting color and a superior electrostatic powder coating.

Temperature ratings

Based on the surface temperature of the fixture;

- Class I, Division 1 is rated T6 for 21 W, 40 W and 50 W (will not exceed 85°C) and rated T5 (will not exceed 100°C) for 60 W configurations.
- Class I Division 2 is rated T4A (will not exceed 120°C), except for 21 W and 50 W configurations and is rated T4 (will not exceed 135°C) for 40 W and 60 W configurations.
- Class II Division 1 & Class III are rated T6 for 21 W, 40 W and 50 W (will not exceed 85°C) and rated T5 (will not exceed 100°C) for 60 W configurations.

Ambient operating temperature

- 21, 40, 50 W: -40°C to +65°C
- 60 W: -40°C to +64°C

Ambient operating humidity

5% ~ 95% RH

Optics

This luminaire is outfitted with either a thermal shock and impact resistant tempered glass lens or a polycarbonate lens. A clear finish is available for the glass lens only and a diffuse finish is available for both lens materials. Type II and III distribution patterns are available with the clear glass lens and Type V distribution pattern is available for diffuse glass and polycarbonate lenses.

OVERVIEW

Light source	LED
Watts (W)	21, 40, 50, 60
Lumen output (lm)	2 648 - 8 514
Efficiency (lm/W)	100 - 124
Color temperature (K)	2 700, 4 000, 5 000
CRI	>75
Weight (lbs)	7.30 - 13.90

• Electrical

Available in either 1 (21 W), 2 (40 W), 3 (50 W) or 4 (60 W) lumen packages with a lumen per watt ration of 100 to 124 lm/W. Driver input voltages are 120-277 V or 347-480 V 50/60Hz are non-dimmable and have 4 kV integrated transient surge protection with a power factor >0.95. The CXM is offered in either 2 700, 4 000 or 5 000 K color temperatures with a color rendering index (CRI) >75.

• NEC/CEC Standards

NEC500/CEC Section 18: Existing plants

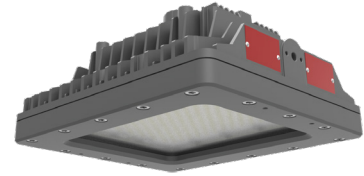
- Hazloc D :
 - Class I, Division 1, Groups B, C, D
 - Class I, Division 2, Groups A, B, C, D
 - Class II, Division 1, Groups E, F, G
 - Class III
- Hazloc E :
 - Class I, Division 2, Groups A, B, C, D
 - Class II, Division 1, Groups E, F, G
 - Class III

NEC505/CEC Section 18 Zones: New plants

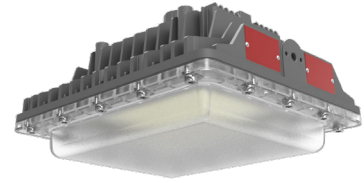
- Hazloc D :
 - Class I, Zone 1, Group IIB + H2
 - Class I, Zone 2, Group IIC
 - Zone 21
- Hazloc E :
 - Class I, Zone 2, Group IIC
 - Zone 21

• Compliances

- Meets requirements of ICES-005 issue 5 for class A products
- 5G vibration resistant in compliance with IEC60598-1 standard, CL-4.20
- IK08 (glass lens)
- IK10 (PC lens)
- UL Standards
 - UL844
 - UL1598A
 - UL1598
 - UL8750
 - CSA Standards
 - CSA C22.2 No.250.0 250.13
 - CSA C22.2 No.137



Glass Lens (CID1, CID2, CID1)



Polycarbonate Lens (CID2, CID1)



Top View (CID1 & CID2)



ICES
005



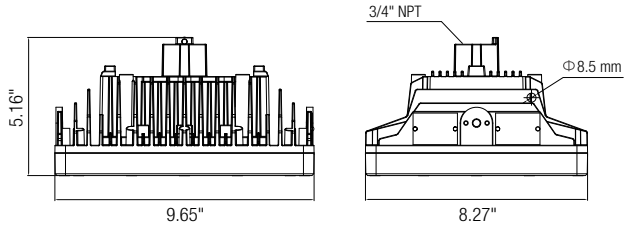
IK08



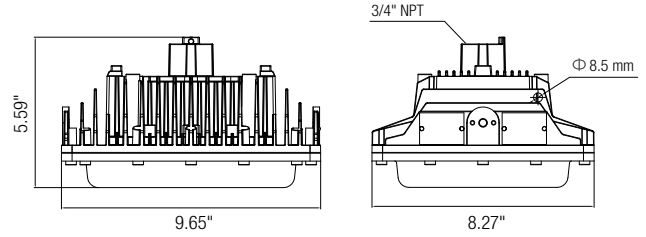
IK10

DIMENSIONS

GLASS LENS



POLYCARBONATE LENS



Lens type	Lumen package	Net Weight (lbs)	Dimensions (LxWxH) (in)
Glass lens	1 (21 W)	10.50	9.7 x 8.3 x 5.1
	2 (40 W)	10.80	
	3 (50 W)	11.70	
	4 (60 W)	11.70	
Polycarbonate lens	1 (21 W)	7.30	9.7 x 8.3 x 5.6
	2 (40 W)	7.50	
	3 (50 W)	8.40	
	4 (60 W)	8.40	

MOUNTINGS

PENDANT MOUNT (STANDARD)



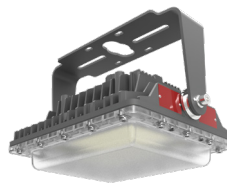
ACCESSORIES REQUIRED FOR OPTIONAL MOUNTING

CEILING MOUNT BKT836

GLASS LENS

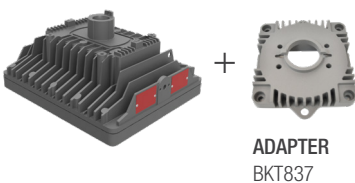


POLYCARBONATE LENS

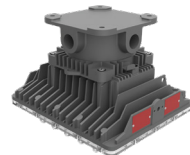


MULTI MOUNT

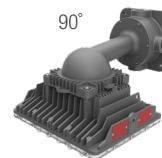
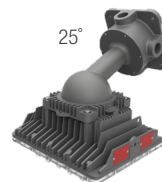
PENDANT MOUNT AND ADAPTER (BKT837) FOR ALL THE FOLLOWING MOUNTINGS:



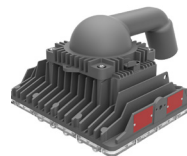
CEILING MOUNT JB018



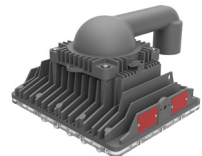
WALL MOUNT BKT771-25 or BKT771-90



POLE MOUNT (25° ANGLE) BKT772-P166 or BKT772-P1900



POLE MOUNT (90° ANGLE) BKT773-P166 or BKT773-P1900



ORDERING GUIDE

CXM				GY			
Series	Lumen package (W)	Distribution type	Volt (V)	Hazloc	Color temp. (K)	Casting color	Lens options
CXM	1 - 21	2 - Type II ¹	W - 120-277	D - CID1, CID2, CIID1	27K - 2 700	GY - Grey	TG - Transparent flat glass lens ² FG - Diffuse flat glass lens ² FP - Diffuse PC lens ³
	2 - 40	3 - Type III ¹	I - 347-480	E - CID2, CIID1	40K - 4 000		
	3 - 50	5 - Type V			W - 120-277		
	4 - 60						

¹ Type II and III only available with TG lens option

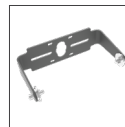
² TG and FG lens options are only available with hazloc D

³ FP lens option is only available with hazloc E

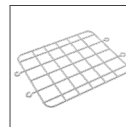
ACCESSORIES FOR MOUNTING (order separately)

Mounting	Part number	Type
PENDANT MOUNT	BKT836	U-Bracket (SUS 304)
	WGD078-F	Stainless steel wireguard (Glass lens)
	WGD078-D	Stainless steel wireguard (Polycarbonate lens)
	HAR1117	Stainless steel safety cable kit
	BKT838	Pipe clamps for pole 1-7/8" ¹
	BKT775	Pipe clamps for pole 2-3/8" ¹

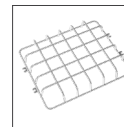
¹ Two (2) pipe clamps per box



BKT836
U-Bracket



WGD078-F
Wireguard
Glass lens



WGD078-D
Wireguard
Polycarbonate lens



HAR1117
Stainless steel
safety cable kit



BKT838 or BKT775
Stanchion mount
pipe clamp

Mounting	Part number	Type
MULTI MOUNT	BKT837	Adapter for multi mount ²
	JB018	Junction box NPT 3/4"
	BKT771-25	Wall mount - 25°
	BKT771-90	Wall mount - 90°
	BKT772-P166	Stanchion - 25° (NPT 1.25")
	BKT772-P1900	Stanchion - 25° (NPT 1.50")
	BKT773-P166	Stanchion - 90° (NPT 1.25")
	BKT773-P1900	Stanchion - 90° (NPT 1.50")
	WGD078-F	Stainless steel wireguard (Glass lens)
	WGD078-D	Stainless steel wireguard (Polycarbonate lens)
	HAR1117	Stainless steel safety cable kit

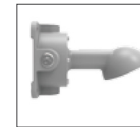
² Mandatory for any Multi mount mountings



BKT837
Adapter for
multi mount²



JB018
Junction box
NPT 3/4"



BKT771-25
Wall mount - 25°



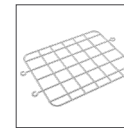
BKT771-90
Wall mount - 90°



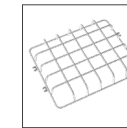
**BKT772-P166 or
BKT772-P1900**
Stanchion - 25°



**BKT773-P166 or
BKT773-P1900**
Stanchion - 90°



WGD078-F
Wireguard
Glass lens



WGD078-D
Wireguard
Polycarbonate lens



HAR1117
Stainless steel
safety cable kit

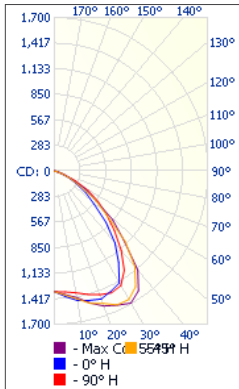
TECHNICAL SPECIFICATION TABLE

Lumen package	Distribution type	Lens type	Watts (W)	Volts (VAC)	LED current (mA)	Lumen output (lm)	Efficiency (lm/w)	CRI	Life L70 (hrs)	Tested hours LM80 (hrs)	Power factor	THD (%)	B.U.G. rating	# of LEDs	
2 700 K															
1	2	Clear glass	21	120-277	113	3 151	147	>75	>300 000	10 000	0.99	<20	B1-U0-G0	60	
	3		21	120-277	113	2 960	138	>75	>300 000	10 000	0.99	<20	B1-U0-G1	60	
	5		21	120-277	113	3 279	153	>75	>300 000	10 000	0.99	<20	B2-U0-G0	60	
2	2		40	120-277	117	5 831	142	>75	>230 000	10 000	0.99	<20	B2-U0-G0	108	
	3		40	120-277	117	5 452	133	>75	>230 000	10 000	0.99	<20	B2-U0-G1	108	
	5		40	120-277	117	6 037	147	>75	>230 000	10 000	0.99	<20	B2-U0-G1	108	
3	2		50	347-480	100	6 760	137	>75	>170 000	10 000	0.99	<20	B3-U0-G0	138	
	3		50	347-480	100	6 396	130	>75	>170 000	10 000	0.99	<20	B2-U0-G1	138	
	5		50	347-480	100	7 051	143	>75	>170 000	10 000	0.96	<20	B3-U0-G1	138	
4	2		60	120-277	124	7 607	138	>75	>130 000	10 000	0.99	<20	B3-U0-G0	138	
	3		60	120-277	124	7 245	131	>75	>130 000	10 000	0.99	<20	B2-U0-G1	138	
	5		60	120-277	124	8 062	145	>75	>130 000	10 000	0.99	<20	B3-U0-G1	138	
1	5		Diffuse glass	21	120-277	113	2 648	123	>75	>300 000	10 000	0.99	<20	B1-U0-G0	60
2				40	120-277	117	4 860	119	>75	>230 000	10 000	0.99	<20	B2-U0-G1	108
3				50	347-480	100	5 694	115	>75	>170 000	10 000	0.96	<20	B3-U0-G1	138
4		60		120-277	124	6 483	117	>75	>130 000	10 000	0.99	<20	B3-U0-G1	138	
1	5	Diffuse polycarbonate	21	120-277	113	2 969	138	>75	>300 000	10 000	0.99	<20	B1-U0-G1	60	
2			40	120-277	117	5 547	135	>75	>230 000	10 000	0.99	<20	B2-U0-G1	108	
3			50	347-480	100	6 519	132	>75	>170 000	10 000	0.96	<20	B2-U0-G1	138	
4			60	120-277	124	7 406	134	>75	>130 000	10 000	0.99	<20	B3-U0-G1	138	
4 000 K															
1	2	Clear glass	21	120-277	113	3 269	150	>75	>300 000	10 000	0.99	<20	B2-U0-G0	60	
	3		21	120-277	113	3 133	144	>75	>300 000	10 000	0.99	<20	B1-U0-G1	60	
	5		21	120-277	113	3 398	156	>75	>300 000	10 000	0.99	<20	B2-U0-G0	60	
2	2		40	120-277	117	5 937	145	>75	>230 000	10 000	0.99	<20	B2-U0-G0	108	
	3		40	120-277	117	5 625	137	>75	>230 000	10 000	0.99	<20	B2-U0-G1	108	
	5		40	120-277	117	6 246	152	>75	>230 000	10 000	0.99	<20	B2-U0-G1	108	
3	2		50	347-480	100	6 972	141	>75	>170 000	10 000	0.99	<20	B3-U0-G0	138	
	3		50	347-480	100	6 450	131	>75	>170 000	10 000	0.99	<20	B2-U0-G1	138	
	5		50	347-480	100	7 292	148	>75	>170 000	10 000	0.96	<20	B3-U0-G1	138	
4	2		60	120-277	124	7 990	144	>75	>130 000	10 000	0.99	<20	B3-U0-G0	138	
	3		60	120-277	124	7 465	135	>75	>130 000	10 000	0.99	<20	B2-U0-G1	138	
	5		60	120-277	124	8 383	151	>75	>130 000	10 000	0.99	<20	B3-U0-G1	138	
1	5		Diffuse glass	21	120-277	113	2 761	127	>75	>300 000	10 000	0.99	<20	B1-U0-G0	60
2				40	120-277	117	5 053	123	>75	>230 000	10 000	0.99	<20	B2-U0-G1	108
3				50	347-480	100	5 880	119	>75	>170 000	10 000	0.96	<20	B2-U0-G1	138
4		60		120-277	124	6 766	122	>75	>130 000	10 000	0.99	<20	B3-U0-G1	138	
1	5	Diffuse polycarbonate	21	120-277	113	3 096	143	>75	>300 000	10 000	0.99	<20	B1-U0-G1	60	
2			40	120-277	117	5 770	140	>75	>230 000	10 000	0.99	<20	B2-U0-G1	108	
3			50	347-480	100	6 808	138	>75	>170 000	10 000	0.96	<20	B2-U0-G1	138	
4			60	120-277	124	7 700	139	>75	>130 000	10 000	0.99	<20	B3-U0-G1	138	
5 000 K															
1	2	Clear glass	21	120-277	113	3 363	155	>75	>300 000	10 000	0.99	<20	B2-U0-G0	60	
	3		21	120-277	113	3 210	148	>75	>300 000	10 000	0.99	<20	B1-U0-G1	60	
	5		21	120-277	113	4 220	162	>75	>300 000	10 000	0.99	<20	B2-U0-G0	60	
2	2		40	120-277	117	6 162	153	>75	>230 000	10 000	0.99	<20	B2-U0-G0	108	
	3		40	120-277	117	5 991	149	>75	>230 000	10 000	0.99	<20	B2-U0-G1	108	
	5		40	120-277	117	6 499	160	>75	>230 000	10 000	0.99	<20	B2-U0-G1	108	
3	2		50	347-480	100	6 948	146	>75	>170 000	10 000	0.99	<20	B3-U0-G0	138	
	3		50	347-480	100	6 519	137	>75	>170 000	10 000	0.99	<20	B2-U0-G1	138	
	5		50	347-480	100	7 179	151	>75	>170 000	10 000	0.96	<20	B3-U0-G1	138	
4	2		60	120-277	124	8 112	147	>75	>130 000	10 000	0.99	<20	B3-U0-G0	138	
	3		60	120-277	124	7 839	142	>75	>130 000	10 000	0.99	<20	B2-U0-G1	138	
	5		60	120-277	124	8 514	154	>75	>130 000	10 000	0.99	<20	B3-U0-G1	138	
1	5		Diffuse glass	21	120-277	113	2 761	127	>75	>300 000	10 000	0.99	<20	B1-U0-G0	60
2				40	120-277	117	5 053	123	>75	>230 000	10 000	0.99	<20	B2-U0-G1	108
3				50	347-480	100	5 880	119	>75	>170 000	10 000	0.96	<20	B2-U0-G1	138
4		60		120-277	124	6 766	122	>75	>130 000	10 000	0.99	<20	B3-U0-G1	138	
1	5	Diffuse polycarbonate	21	120-277	113	3 096	143	>75	>300 000	10 000	0.99	<20	B1-U0-G1	60	
2			40	120-277	117	5 770	140	>75	>230 000	10 000	0.99	<20	B2-U0-G1	108	
3			50	347-480	100	6 808	138	>75	>170 000	10 000	0.96	<20	B2-U0-G1	138	
4			60	120-277	124	7 700	139	>75	>130 000	10 000	0.99	<20	B3-U0-G1	138	

PHOTOMETRIC DATA¹

CXM12XX40KGYTG • 3 245.1 lm

Polar candela distribution



Zonal lumen summary

Zone	Lumens	% Fixture
0-30	1 150.8	35.5%
0-40	1 894.7	58.4%
0-60	2 969.2	91.5%
60-90	275.9	8.5%
70-100	63.3	1.9%
90-120	0.0	0%
0-90	3 245.1	100%
90-180	0.0	0%
0-180	3 245.1	100%

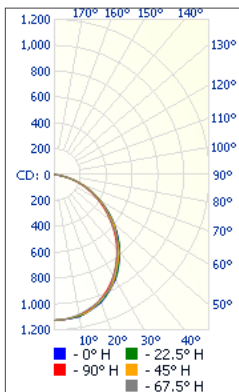
Illuminance at a distance

Center beam fc	Beam width	
	Vertical	Horizontal
17.0'	4.65	23.7' 36.6'
34.0'	1.16	47.4' 73.3'
51.0'	0.52	71.0' 109.9'
68.0'	0.29	94.7' 146.6'
85.0'	0.19	118.4' 183.2'
102.0'	0.13	142.1' 219.9'

■ Vert. spread: 69.7°
■ Horiz. spread: 94.3°

CXM13XX40KGYTG • 3 065.7 lm

Polar candela distribution



Zonal lumen summary

Zone	Lumens	% Fixture
0-30	649.9	21.2%
0-40	1 171.5	38.2%
0-60	2 524.4	82.3%
60-90	541.3	17.7%
70-100	122.7	4%
90-120	0.0	0%
0-90	3 065.7	100%
90-180	0.0	0%
0-180	3 065.7	100%

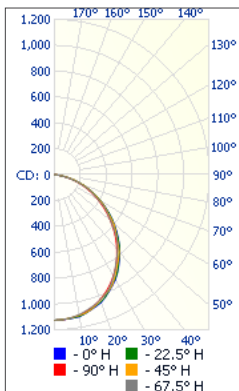
Illuminance at a distance

Center beam fc	Beam width	
	Vertical	Horizontal
17.0'	2.65	36.0' 54.6'
34.0'	0.66	72.0' 109.2'
51.0'	0.29	108.0' 163.8'
68.0'	0.17	144.0' 218.4'
85.0'	0.11	180.0' 273.0'
102.0'	0.07	216.0' 327.5'

■ Vert. spread: 93.3°
■ Horiz. spread: 116.2°

CXM15XX40KGYFG • 2 872.7 lm

Polar candela distribution



Zonal lumen summary

Zone	Lumens	% Fixture
0-30	868.0	30.2%
0-40	1 400.5	48.8%
0-60	2 377.1	82.7%
60-90	495.7	17.3%
0-90	2 872.7	100%

Illuminance at a distance

Center beam fc	Beam width	
	Vertical	Horizontal
17.0'	3.91	44.0' 41.2'
34.0'	0.98	88.0' 82.5'
51.0'	0.43	132.0' 123.7'
68.0'	0.24	176.0' 165.0'
85.0'	0.16	220.0' 206.2'
102.0'	0.11	264.0' 247.5'

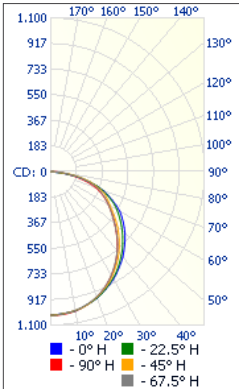
■ Vert. spread: 104.6°
■ Horiz. spread: 101.0°

¹ Complete IES files available on our website.

PHOTOMETRIC DATA¹

CXM15XX40KGYFP • 3 178.7 lm

Polar candela distribution



Zonal lumen summary

Zone	Lumens	% Fixture
0-30	803.1	25.3%
0-40	1 318.0	41.5%
0-60	2 370.9	74.6%
60-90	807.8	25.4%
0-90	3 178.7	100%

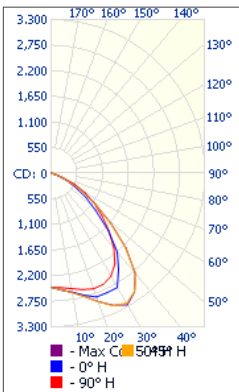
Illuminance at a distance

Center beam fc		Beam width	
17.0'	3.57	67.1'	51.8'
34.0'	0.89	134.2'	103.6'
51.0'	0.40	201.3'	155.4'
68.0'	0.22	268.4'	207.2'
85.0'	0.14	335.5'	259.0'
102.0'	0.10	402.6'	310.8'

Vert. spread: 126.3°
Horiz. spread: 113.4°

CXM22XX40KGYTG • 5 984.4 lm

Polar candela distribution



Zonal lumen summary

Zone	Lumens	% Fixture
0-30	2 085.3	34.8%
0-40	3 450.9	57.7%
0-60	5 477.6	91.5%
60-90	506.7	8.5%
70-100	113.6	1.9%
90-120	0.0	0%
0-90	5 984.3	100%
90-180	0.0	0%
0-180	5 984.4	100%

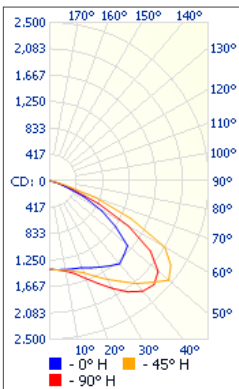
Illuminance at a distance

Center beam fc		Beam width	
17.0'	8.51	23.0'	35.6'
34.0'	2.13	45.9'	71.2'
51.0'	0.95	68.9'	106.9'
68.0'	0.53	91.8'	142.5'
85.0'	0.34	114.8'	178.1'
102.0'	0.24	137.8'	213.7'

Vert. spread: 68.1°
Horiz. spread: 92.7°

CXM23XX40KGYTG • 5 741.7 lm

Polar candela distribution



Zonal lumen summary

Zone	Lumens	% Fixture
0-30	1 245.4	21.7%
0-40	2 273.0	39.6%
0-60	4 801.7	83.6%
60-90	939.9	16.4%
70-100	209.9	3.7%
90-120	0.0	0%
0-90	5 741.7	100%
90-180	0.0	0%
0-180	5 741.7	100%

Illuminance at a distance

Center beam fc		Beam width	
17.0'	4.86	32.7'	49.3'
34.0'	1.21	65.4'	98.6'
51.0'	0.54	98.1'	147.9'
68.0'	0.30	130.8'	197.3'
85.0'	0.19	163.5'	246.6'
102.0'	0.13	196.2'	295.9'

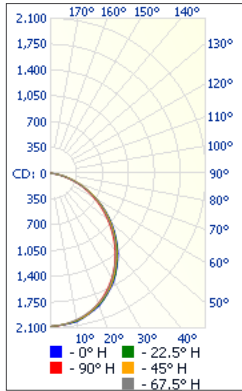
Vert. spread: 87.8°
Horiz. spread: 110.8°

¹ Complete IES files available on our website.

PHOTOMETRIC DATA¹

CXM25XX40KGYFG • 5 126.5 lm

Polar candela distribution



Zonal lumen summary

Zone	Lumens	% Fixture
0-30	1 582.0	30.9%
0-40	2 544.0	49.6%
0-60	4 285.9	83.6%
60-90	840.6	16.4%
0-90	5 126.5	100%

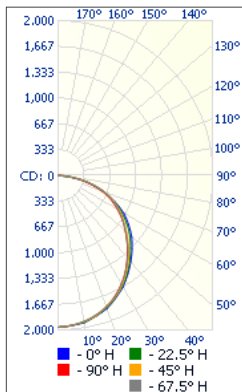
Illuminance at a distance

Center beam fc	Beam width	
	Vertical	Horizontal
17.0'	7.22	42.3' / 39.8'
34.0'	1.81	84.6' / 79.5'
51.0'	0.80	127.0' / 119.3'
68.0'	0.45	169.3' / 159.1'
85.0'	0.29	211.6' / 198.8'
102.0'	0.20	253.9' / 238.6'

Vert. spread: 102.4°
Horiz. spread: 98.9°

CXM25XX40KGYFP • 5 808.8 lm

Polar candela distribution



Zonal lumen summary

Zone	Lumens	% Fixture
0-30	1 521.2	26.2%
0-40	2 484.6	42.8%
0-60	4 428.5	76.2%
60-90	1 380.3	23.8%
0-90	5 808.8	100%

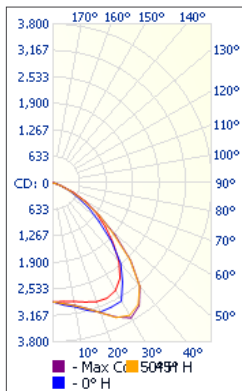
Illuminance at a distance

Center beam fc	Beam width	
	Vertical	Horizontal
17.0'	6.82	58.5' / 51.0'
34.0'	1.70	117.0' / 102.0'
51.0'	0.76	175.5' / 152.9'
68.0'	0.43	234.0' / 203.9'
85.0'	0.27	292.6' / 254.9'
102.0'	0.19	351.1' / 305.9'

Vert. spread: 119.7°
Horiz. spread: 112.6°

CXM32XX40KGYTG • 6 888.4 lm

Polar candela distribution



Zonal lumen summary

Zone	Lumens	% Fixture
0-30	2 404.5	34.9%
0-40	3 987.4	57.9%
0-60	6 335.6	92%
60-90	552.8	8%
70-100	119.6	1.7%
90-120	0.0	0%
0-90	6 888.4	100%
90-180	0.0	0%
0-180	6 888.4	100%

Illuminance at a distance

Center beam fc	Beam width	
	Vertical	Horizontal
17.0'	9.88	23.3' / 35.4'
34.0'	2.47	46.7' / 72.7'
51.0'	1.10	70.0' / 109.1'
68.0'	0.62	93.4' / 145.4'
85.0'	0.40	116.7' / 181.8'
102.0'	0.27	140.1' / 218.1'

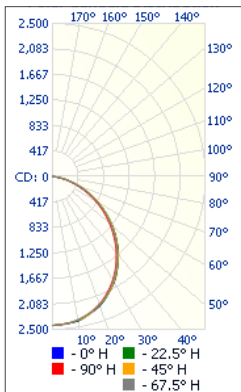
Vert. spread: 68.9°
Horiz. spread: 93.8°

¹ Complete IES files available on our website.

PHOTOMETRIC DATA¹

CXM33XX40KGYTG • 6 310.6 lm

Polar candela distribution



Zonal lumen summary

Zone	Lumens	% Fixture
0-30	1 375.6	21.8%
0-40	2 466.4	39.1%
0-60	5 243.8	83.1%
60-90	1 066.8	16.9%
70-100	237.1	3.8%
90-120	0.0	0%
0-90	6 310.6	100%
90-180	0.0	0%
0-180	6 310.6	100%

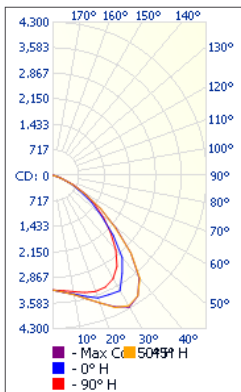
Illuminance at a distance

	Center beam fc	Beam width	
17.0'	5.66	33.1'	50.6'
34.0'	1.41	1.41'	101.2'
51.0'	0.63	0.63'	151.8'
68.0'	0.35	0.35'	202.4'
85.0'	0.23	0.23'	253.0'
102.0'	0.16	0.16'	303.6'

■ Vert. spread: 88.4°
■ Horiz. spread: 112.2°

CXM35XX40KGYFG • 6 119.9 lm

Polar candela distribution



Zonal lumen summary

Zone	Lumens	% Fixture
0-30	1 868.7	30.5%
0-40	3 014.2	49.3%
0-60	5 101.5	83.4%
60-90	1 018.4	16.6%
0-90	6 119.9	100%

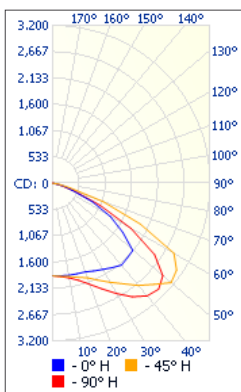
Illuminance at a distance

	Center beam fc	Beam width	
17.0'	8.45	42.8'	40.9'
34.0'	2.11	85.7'	81.7'
51.0'	0.94	128.5'	122.6'
68.0'	0.53	171.4'	163.4'
85.0'	0.34	214.2'	204.3'
102.0'	0.23	257.0'	25.1'

■ Vert. spread: 103.1°
■ Horiz. spread: 100.5°

CXM35XX40KGYFP • 7 002.0 lm

Polar candela distribution



Zonal lumen summary

Zone	Lumens	% Fixture
0-30	1 811.8	25.9%
0-40	2 968.5	42.4%
0-60	5 323.2	76%
60-90	1 678.8	24%
0-90	7 002.0	100%

Illuminance at a distance

	Center beam fc	Beam width	
17.0'	8.04	59.2'	53.5'
34.0'	2.01	118.4'	107.0'
51.0'	0.89	177.7'	160.5'
68.0'	0.50	236.9'	214.0'
85.0'	0.32	296.1'	267.6'
102.0'	0.22	355.3'	321.1'

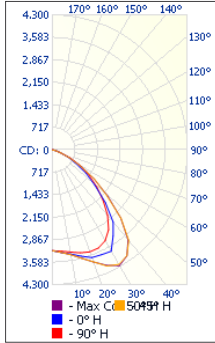
■ Vert. spread: 120.3°
■ Horiz. spread: 115.1°

¹ Complete IES files available on our website.

PHOTOMETRIC DATA¹

CXM42XX40KGYTG • 7 964.0 lm

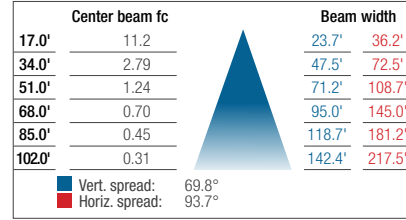
Polar candela distribution



Zonal lumen summary

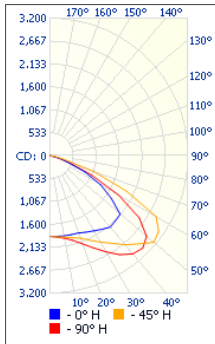
Zone	Lumens	% Fixture
0-30	2 739.3	34.4%
0-40	4 554.2	57.2%
0-60	7 294.8	91.6%
60-90	669.1	8.4%
70-100	150.9	1.9%
0-90	7 964.0	100%
90-180	0.0	0%
0-180	7 964.0	100%

Illuminance at a distance



CXM43XX40KGYTG • 7 637.1 lm

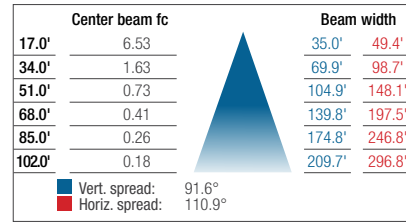
Polar candela distribution



Zonal lumen summary

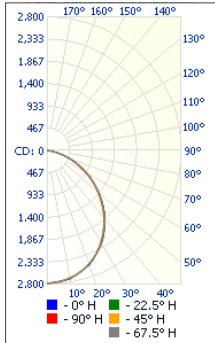
Zone	Lumens	% Fixture
0-30	1 661.0	21.7%
0-40	3 010.8	39.4%
0-60	6 356.2	83.2%
60-90	1 280.8	16.8%
70-100	294.5	3.9%
90-120	0.0	0%
0-90	7 637.0	100%
90-180	0.0	0%
0-180	7 637.1	100%

Illuminance at a distance



CXM45XX40KGYFG • 6 810.2 lm

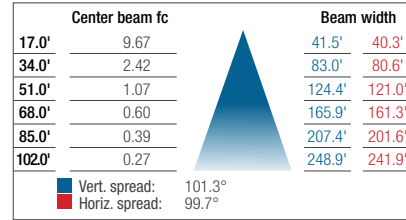
Polar candela distribution



Zonal lumen summary

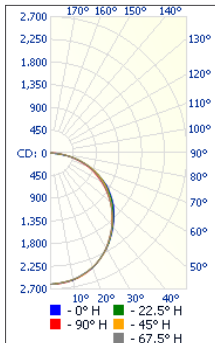
Zone	Lumens	% Fixture
0-30	2 116.7	31.1%
0-40	3 403.3	50%
0-60	5 724.6	84.1%
60-90	1 085.6	15.9%
0-90	6 810.2	100%

Illuminance at a distance



CXM45XX40KGYFP • 7 700.3 lm

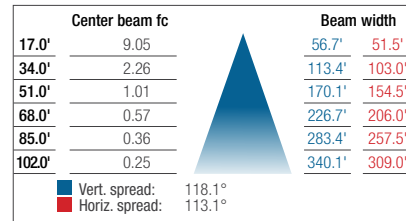
Polar candela distribution



Zonal lumen summary

Zone	Lumens	% Fixture
0-30	2 023.4	26.3%
0-40	3 309.0	43%
0-60	5 906.3	76.7%
60-90	1 794.0	23.3%
0-90	7 700.3	100%

Illuminance at a distance



¹ Complete IES files available on our website.

CDF-L

HAZARDOUS LOCATION FLOOD LUMINAIRE

Class I, Division 1, Groups C, D

Class I, Division 2, Groups A, B, C, D

Class II, Division 2, Groups F, G

Class III

Non recessed Marine luminaires, outside type (salt water)

The CDF-L Hazardous Location LED flood luminaire is designed for installations where moisture, dirt, dust, corrosion and vibration may be present, or in NEMA 3 and 4X locations where wind, water, snow or high ambient can be expected. The CDF-L is also NEC/CEC certified to be used in hazardous environments where there is presence of flammable vapours or gases and combustible dusts.

FEATURES AND SPECIFICATIONS

• Construction

Housing

Rugged and resilient housing made of a copper-free aluminum, corrosion resistant casting, with separated driver compartment for improved thermal management. All exposed fasteners are quality stainless steel as well as high temperature quality silicone gasketing. Available in a grey casting color and a superior electrostatic powder coating.

Temperature ratings

Based on the surface temperature of the fixture:

- Class I, Division 2, Class II, Division 2 & Class III are rated T4A (will not exceed 120°C)
- Class I, Division 1 is rated T6 (will not exceed 85°C)

Ambient operating temperature

-40°C to +60°C

Ambient operating humidity

5% ~ 95% RH

Mounting options

The CDF-L series comes standard with a pendant mount however in option pole, ceiling and wall mounting are available.

Optics

Comes standard with a thermal shock and impact resistant tempered glass lens and is available in a clear finish with a 120° beam angle. A diffuse lens finish and a 25° and a 60° beam angles are also available in option.

• Electrical

Available in either **S1** (80 W), **S2** (100 W) or **S3** (150 W) packages with a lumen per watt ratio of 95 to 130 lm/W. Driver allows input voltage from 120-277 V 50/60 Hz or 347-480 V 50/60 Hz. All drivers are non-dimmable and have 4 kV integrated transient surge protection with a power factor >0.95.

Durable high powered OSRAM LEDs with solder-less board connections for shock and vibration resistance. The CDF-L is offered in either 3 000, 4 000 or 5 000 K color temperatures with a color rendering index (CRI) >70.

• NEC/CEC Standards

NEC500/CEC Section 18: Existing plants

- Hazloc A :
 - Class I, Division 1, Groups C, D
 - Class III
- Hazloc D :
 - Class I, Division 2, Groups A, B, C, D
 - Class II, Division 2, Groups F, G
 - Class III

NEC505/CEC Section 18 Zones: New plants

- Hazloc A :
 - Class I, Zone 1, Group IIB
 - Class I, Zone 2, Group IIC
 - Zone 22
- Hazloc D :
 - Class I, Zone 2, Group IIC
 - Zone 22

• Compliances

- Meets requirements of ICES-005 issue 4 for class A products
- 5G vibration resistant in compliance with IEC60598-1 standard, CL-4.20
- IP66
- IK08
- UL 1598A
- UL 1598
- UL 8750
- CSA C22.2 No.137
- CSA C22.2 No.30-M1986
- CSA C22.2 No.25-1966
- CSA C22.2 No.250.0
- CSA C22.2 No.250.13



OVERVIEW

Light source	LED
Watts (W)	80 - 150
Lumen output (lm)	7 862 - 19 500
Efficiency (lm/W)	95 - 130
Color temperature (K)	3 000, 4 000, 5 000
CRI	33.5 - 34.2
Weight (lbs)	1x4: 11.5, 2x2: 11, 2x4: 20



quick ship



LED fixture



wet location



ICES 005



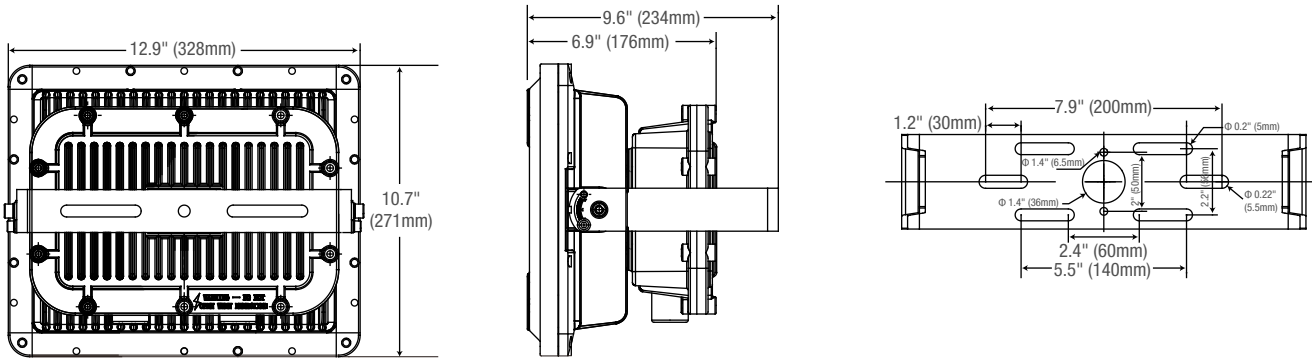
IK08



Not all products are qualified on the DLC QPL. To view our DLC qualified products, please consult the DLC Qualified Products List at www.designlights.org/search.

DIMENSIONS

Model	Net weight (lbs)	Dimensions (LxWxH)
CDF-LS1	33.5	12.9 x 10.7 x 6.9 in
CDF-LS2	33.7	
CDF-LS3	34.2	



MOUNTING

PENDANT (standard)



ACCESSORIES REQUIRED FOR OPTIONAL MOUNTING

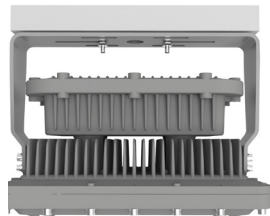
POLE MOUNT

BKT761-FL + BKT763



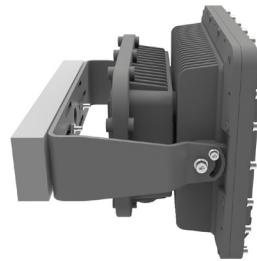
CEILING MOUNT

BKT761-FL



WALL MOUNT

BKT761-FL



QUICK SHIP AND TECHNICAL SPECIFICATION TABLE

Part number	DLC unique ID	Watts (W)	Color temp. (K) ²	Lumen output (lm) ³	Efficiency (lm/W)	CRI	Life L70 (hrs) ⁴	Tested hours LM-80 (hrs) ⁴	LED current (mA)	Power factor	THD (%)	BUG	Beam angle (°)	Case qty (master)
120-277 V														
CDF-LS1-W-D/4K120T	-	80	4 000	10 059	126	70	>60 000	10 000	525	0.99	17	B4-U0-G1	120	1
CDF-LS2-W-D/4K120T	-	100	4 000	12 339	123	70	>60 000	10 000	525	0.99	15	B4-U0-G1	120	1
CDF-LS3-W-D/4K120T	-	150	4 000	18 122	121	70	>60 000	10 000	480	1.00	12	B4-U0-G1	120	1
CDF-LS1-W-D/5K120T	PL4BXFYSZ3V7	80	5 000	10 400	130	70	>60 000	10 000	525	0.99	17	B4-U0-G1	120	1
CDF-LS2-W-D/5K120T	PLLYWND1YSFE	100	5 000	13 000	130	70	>60 000	10 000	525	0.99	15	B4-U0-G1	120	1
CDF-LS3-W-D/5K120T	PLL4DFZFZ868	150	5 000	19 500	130	70	>60 000	10 000	480	1.00	12	B4-U0-G1	120	1
347-480 V														
CDF-LS1-H-D/4K120T	-	80	4 000	9 979	125	70	>60 000	10 000	525	0.90	10	B4-U0-G1	120	1
CDF-LS2-H-D/4K120T	-	100	4 000	11 758	118	70	>60 000	10 000	525	0.94	8	B4-U0-G1	120	1
CDF-LS3-H-D/4K120T	-	150	4 000	17 718	118	70	>60 000	10 000	480	0.93	11	B4-U0-G1	120	1
CDF-LS1-H-D/5K120T	PLHLSH31B1KQ	80	5 000	10 400	130	70	>60 000	10 000	525	0.90	10	B4-U0-G1	120	1
CDF-LS2-H-D/5K120T	PLIUN056Y7F6	100	5 000	13 000	130	70	>60 000	10 000	525	0.94	8	B4-U0-G1	120	1
CDF-LS3-H-D/5K120T	PLYNB41BYCUT	150	5 000	19 500	130	70	>60 000	10 000	480	0.93	11	B4-U0-G1	120	1

¹ **QUICK SHIP:** Product availability is subject to change without notice. Please contact your Stanpro customer service representative to confirm inventory levels at time of order.

² Typical color temperature range: +/- 5 %.

³ Lumen values are derived from photometric testing. Initial lumens range: +/- 10 %.

⁴ Life hours are derived from IESNA LM-80-08 testing report and projected per IESNA TM-21-11 extrapolations.

ORDERING GUIDE

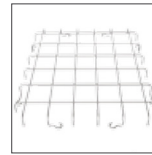
Series	Lamp type	Lumen package	Volts (V)	Hazloc	Color temp. (K)	Beam angle (°)	Lens option
CDF	L - LED	S1 - Refer to lumen S2 - chart table S3 - for details	W - 120-277 H - 347-480	A - Class I Division 1 Class III D - Class I Division 2 Class II Division 2 Class III	3K - 3 000 4K - 4 000 5K - 5 000	25 - 25 60 - 60 120 - 120	D - Diffuse tempered glass T - Transparent tempered glass

ACCESSORIES (order separately)

Part number	Type
BKT763	Pole type stanchion NPT 2-3/8"
WGD068	Stainless steel wireguard
HAR1042	Stainless steel safety cable kit
BKT761-FL	U bracket



BKT763
Pole type stanchion



WGD068
Stainless steel wireguard



HAR1042
Stainless steel safety cable kit



BKT761-FL
U bracket

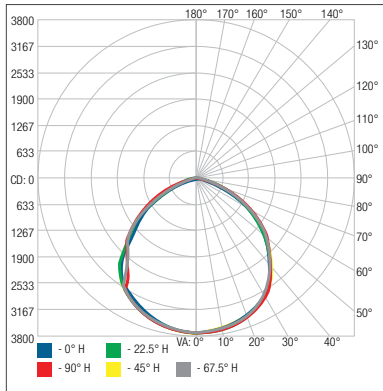
TECHNICAL SPECIFICATION TABLE

Lumen package	Volts (V)	Transparent Lens		Diffused Lens						CRI	Life L70 (hrs)	Tested hours LM-80 (hrs)	Power factor	THD (%)
		3000 K		3000 K		4 000 K		5 000 K						
		Lumen (lm)	Efficiency (lm/W)	Lumen (lm)	Efficiency (lm/W)	Lumen (lm)	Efficiency (lm/W)	Lumen (lm)	Efficiency (lm/W)					
S1	120-277	9787	122	7862	98	7910	99	8280	104	70	>60 000	10 000	0.99	17
	347-480	9787	122	7862	98	7910	99	8280	104	70	>60 000	10 000	0.90	10
S2	120-277	11 757	118	9508	95	9596	96	10 014	100	70	>60 000	10 000	0.99	15
	347-480	11 757	118	9508	95	9596	96	10 014	100	70	>60 000	10 000	0.94	8
S3	120-277	18 179	121	14 661	98	14 829	99	14 892	99	70	>60 000	10 000	0.99	12
	347-480	18 179	121	14 661	98	14 829	99	14 892	99	70	>60 000	10 000	0.93	11

PHOTOMETRIC DATA¹

CDF-LS1-W-D/4K120T • 10 059 lm

Polar candela distribution



Zonal lumen summary

Zone	Lumens	% Fixture
0-30	2 944.5	30.3%
0-40	4 847.5	49.8%
0-60	8 308.2	85.4%
60-90	1 420.3	14.6%
0-90	9 728.5	100%

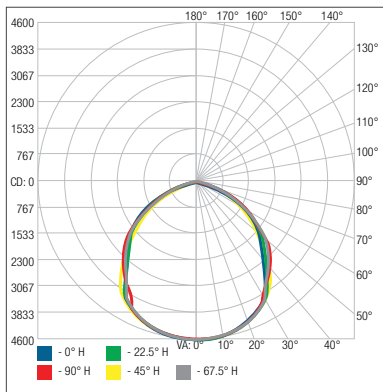
Illuminance at a distance

Center beam fc		Beam width	
1.7'	1 286 fc	4.4'	4.9'
3.3'	341 fc	8.6'	9.5'
5.0'	149 fc	13.0'	14.4'
6.7'	82.8 fc	17.4'	19.3'
8.3'	54.0 fc	21.6'	23.9'
10.0'	37.2 fc	26.0'	28.8'

■ Vert. spread: 104.8°
■ Horiz. spread: 110.4°

CDF-LS2-W-D/4K120T • 12 339 lm

Polar candela distribution



Zonal lumen summary

Zone	Lumens	% Fixture
0-30	3 628.6	30.8%
0-40	5 895.4	50.1%
0-60	10 016.5	85.1%
60-90	1 753.7	14.9%
0-90	11 770.2	100%

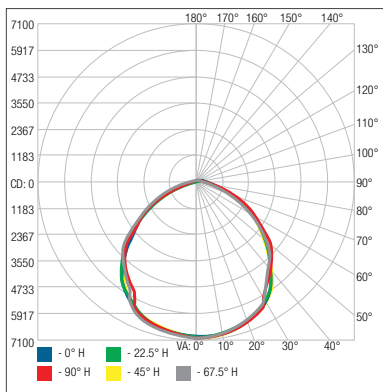
Illuminance at a distance

Center beam fc		Beam width	
1.7'	1 591 fc	4.4'	4.5'
3.3'	422 fc	8.6'	8.8'
5.0'	184 fc	13.1'	13.4'
6.7'	102 fc	17.5'	17.9'
8.3'	66.7 fc	21.7'	22.2'
10.0'	46.0 fc	26.2'	26.7'

■ Vert. spread: 105.2°
■ Horiz. spread: 106.4°

CDF-LS3-W-D/4K120T • 18 122 lm

Polar candela distribution



Zonal lumen summary

Zone	Lumens	% Fixture
0-30	5 560.2	30.3%
0-40	9 080.5	49.4%
0-60	15 598.5	84.9%
60-90	2 772.8	15.1%
0-90	18 371.4	100%

Illuminance at a distance

Center beam fc		Beam width	
1.7'	2 436 fc	4.7'	4.6'
3.3'	647 fc	9.1'	8.9'
5.0'	282 fc	13.8'	13.4'
6.7'	157 fc	18.5'	18.0'
8.3'	102 fc	22.9'	22.3'
10.0'	70.4 fc	27.6'	26.9'

■ Vert. spread: 108.1°
■ Horiz. spread: 106.7°

¹ Complete IES files available on our website.

CDL-L

HAZARDOUS LOCATION LED LINEAR LUMINAIRE

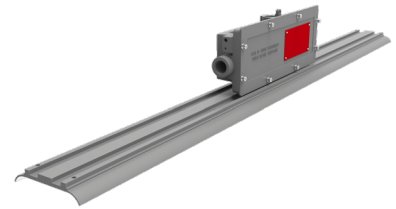
Class I, Division 2, Groups A, B, C, D

Class II, Division 1, Groups E, F, G

Class III

Non recessed Marine luminaires, outside type (salt water)

The CDL-L Hazardous Location LED linear luminaire is designed for installations where moisture, dirt, dust, corrosion and vibration may be present. The CDL-L is also NEC/CEC certified to be used in hazardous environments where there is presence of flammable vapors or gases.



FEATURES AND SPECIFICATIONS

• Construction

Housing

Rugged and resilient housing made of a copper-free aluminum, corrosion resistant casting, with separated driver compartment for improved thermal management. All exposed fasteners are quality stainless steel as well as high temperature quality silicone gasketing. Available in a grey casting color and a superior electrostatic powder coating.

Temperature ratings

Based on the surface temperature of the fixture;

– Class I, Division 2 is rated T3C
(will not exceed 160°C)

– Class II, Division 1 & Class III are rated T4A
(will not exceed 120°C)

Ambient operating temperature

-40°C to +50°C

Ambient operating humidity

5% ~ 95% RH

Optics

Comes standard with a thermal shock and impact resistant polycarbonate lens and is available in a clear finish with a 110° beam angle. A diffuse finish is also available in option.

• Electrical

Available in either A1 (40 W) or A2 (80 W) configurations with a lumen per watt ratio of 120 to 152 lm/W. Driver input voltage is 120-277 V 50/60 Hz, or 347-480 V 50/60 Hz. All drivers are non-dimmable and have 4 kV integrated transient surge protection with a power factor >0.95. Durable high LUXEON LEDs with solder-less board connections for shock and vibration resistance. The CDL-L is offered in either 3 000, 4 000 and 5 000 K, with a color rendering index (CRI) >70.

• NEC/CEC Standards

NEC500/CEC Section 18: Existing plants
Hazloc C

- Class I, Division 2, Groups A, B, C, D
- Class II, Division 1, Groups E, F, G
- Class II, Division 2, Groups F, G

NEC505/CEC Section 18 Zones: New plants

- Hazloc C
- Class I, Zone 2, Group IIC
- Zone 21

• Compliances

- Meets requirements of ICES-005 issue 4 for class A products
- 5G vibration resistant in compliance with IEC60598-1 standard, CL-4.20
- IP66
- IK08
- UL1598A
- UL1598
- UL8750
- CSA C22.2 No.137
- CSA C22.2 No.250, No.250.13

OVERVIEW

Light source	LED
Watts (W)	40 - 80
Lumen output (lm)	4 850 - 12 231
Efficiency (lm/W)	120 - 153
Color temperature (K)	3 000, 4 000, 5 000
CRI	>70



quick
ship



LED
fixture



ICES
005



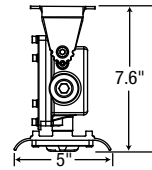
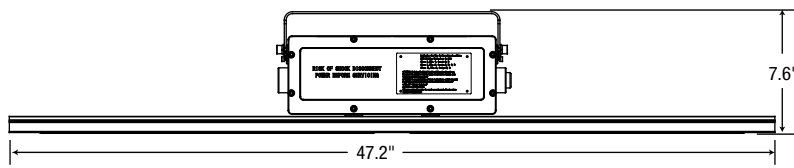
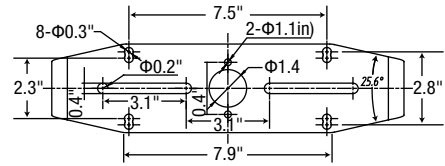
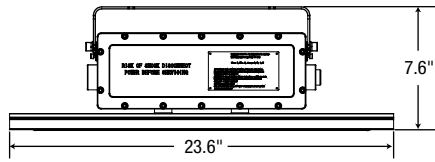
IK08



Not all products are qualified on the DLC QPL. To view our DLC qualified products, please consult the DLC Qualified Products List at www.designlights.org/search.

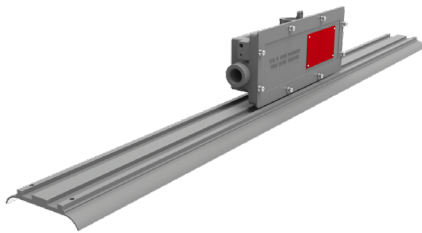
DIMENSIONS

Part #	Net weight (lbs)	Dimensions (LxWxH)
CDL-LS1	12.1	23.6 x 5 x 7.6"
CDL-LS2	16.7	47.2 x 5 x 7.6"



MOUNTING

PENDANT (STANDARD)



ACCESSORIES REQUIRED FOR OPTIONAL MOUNTING

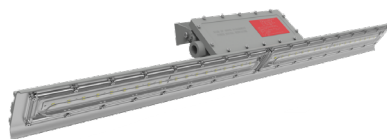
CEILING MOUNT

BKT761-LN



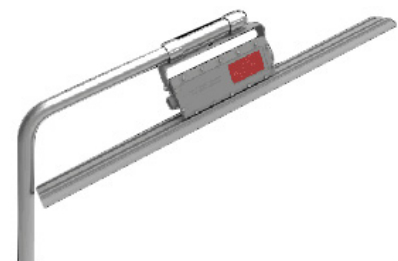
WALL MOUNT

BKT761-LN



POLE MOUNT

BKT775 + BKT761-LN



QUICK SHIP AND TECHNICAL SPECIFICATION TABLE 1

Part number	DLC unique ID	Watts (W)	Color temp. (K) ²	Lumen output (lm) ³	Efficiency (lm/W)	CRI	Life L70 (hrs) ⁴	Tested hours LM-80 (hrs) ⁴	LED current (mA)	Power factor	THD (%)	B.U.G. rating	Beam angle (°)	Case qty (master)
120-277 V														
CDL-LS1-W-C/40K-T	N/A	40	4 000	6 041	151	70	>54 000	9 000	84	1.00	16	B4-U0-G1	110	1
CDL-LS2-W-C/40K-T	N/A	80	4 000	12 231	153	70	>54 000	9 000	84	0.99	9	B4-U0-G1	110	1
CDL-LS1-W-C/50K-T	PLSH9Y90XVPQ	40	5 000	5 480	135	70	>54 000	9 000	84	1.00	16	B4-U0-G1	110	1
CDL-LS2-W-C/50K-T	PLZZSEDSND5V	80	5 000	10 960	137	70	>54 000	9 000	84	0.99	9	B4-U0-G1	110	1
347-480 V														
CDL-LS1-H-C/40K-T	N/A	40	4 000	5 984	150	70	>54 000	9 000	84	0.89	16	B4-U0-G1	110	1
CDL-LS2-H-C/40K-T	N/A	80	4 000	11 761	147	70	>54 000	9 000	84	0.89	9	B4-U0-G1	110	1
CDL-LS1-H-C/50K-T	PLVCFPEVVADM	40	5 000	5 480	132	70	>54 000	9 000	84	0.89	16	B4-U0-G1	110	1
CDL-LS2-H-C/50K-T	PLUJ84YPCXZY	80	5 000	10 960	137	70	>54 000	9 000	84	0.89	9	B4-U0-G1	110	1

¹ **QUICK SHIP:** Product availability is subject to change without notice. Please contact your Stanpro customer service representative to confirm inventory levels at time of order.

² Typical color temperature range: +/- 5 %.

³ Lumen values are derived from photometric testing. Initial lumens range: +/- 10 %.

⁴ Life hours are derived from IESNA LM-80-08 testing report and projected per IESNA TM-21-11 extrapolations.

ORDERING GUIDE

Series	Lamp type	Lumen package ¹	Volts (V)	Hazloc	Color temp. (K)	Lens option
CDL	L - LED	S1 - Refer to the S2 - technical specifications table for details	W - 120-277 H - 347-480	C - Class I Division 2, Class II Division 1 Class III	30K - 3 000 40K - 4 000 50K - 5 000	D - Diffuse polycarbonate lens T - Transparent polycarbonate lens

¹ S1-40 W is a 2 ft fixture; S2-80 W is a 4 ft fixture.

ACCESSORIES (order separately)

Part number	Type
HAR1055	Stainless steel safety cable kit
BKT775	Stanchion mount pipe clamp ¹
BKT761-LN	U-bracket

¹ Include 2 pipes per box.



BKT775
Stanchion mount pipe clamp



BKT761-LN
U-bracket



HAR1055
Stainless steel safety cable kit

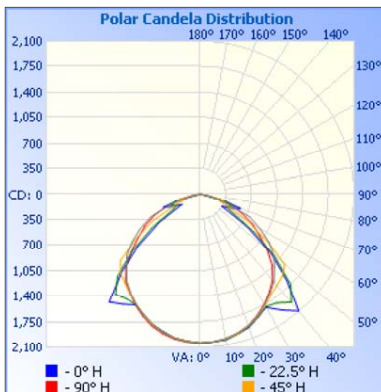
TECHNICAL SPECIFICATION TABLE

Lumen package	Lens type	Volts (VAC)	LED current (mA)	# of LEDs	Watts (W)	CRI	Lumens output (lm)	Efficiency (lm/w)	Life L70 (hrs)	Tested hours LM-80 (hrs)	Power factor	THD (%)	B.U.G. Rating
3 000 K													
A1	Transparent	120-277	84	18	40	70	6 061	152	54 000	9 000	1.00	16	B4-U0-G1
		347-480	84	18	40	70	6 061	152	54 000	9 000	0.89	16	B4-U0-G1
A2		120-277	84	36	80	70	11 598	145	54 000	9 000	0.99	9	B4-U0-G1
		347-480	84	36	80	70	11 598	145	54 000	9 000	0.89	9	B4-U0-G1
A1	Diffuse	120-277	84	18	40	70	5 210	130	54 000	9 000	1.00	16	B4-U0-G1
		347-480	84	18	40	70	5 210	130	54 000	9 000	0.89	16	B4-U0-G1
A2		120-277	84	36	80	70	9 847	123	54 000	9 000	0.99	9	B4-U0-G1
		347-480	84	36	80	70	9 847	123	54 000	9 000	0.89	9	B4-U0-G1
4 000 K													
A1	Diffuse	120-277	84	18	40	70	4 850	121	54 000	9 000	1.00	16	B4-U0-G1
		347-480	84	18	40	70	4 850	121	54 000	9 000	0.89	16	B4-U0-G1
A2		120-277	84	36	80	70	9 595	120	54 000	9 000	0.99	9	B4-U0-G1
		347-480	84	36	80	70	9 595	120	54 000	9 000	0.89	9	B4-U0-G1
5 000 K													
A1	Diffuse	120-277	84	18	40	70	5 270	132	54 000	9 000	1.00	16	B4-U0-G1
		347-480	84	18	40	70	5 270	132	54 000	9 000	0.89	16	B4-U0-G1
A2		120-277	84	36	80	70	9 931	124	54 000	9 000	0.99	9	B4-U0-G1
		347-480	84	36	80	70	9 931	124	54 000	9 000	0.89	9	B4-U0-G1

PHOTOMETRIC DATA¹

CDL-LS1-W-C/40K-T • 6 041 lm

Polar candela distribution



Zonal lumen summary

Zone	Lumens	% Fixture
0-30	1 598.1	28.5%
0-40	2 682.6	47.9%
0-60	4 750.2	84.7%
60-90	855.7	15.3%
0-90	5 605.9	100%

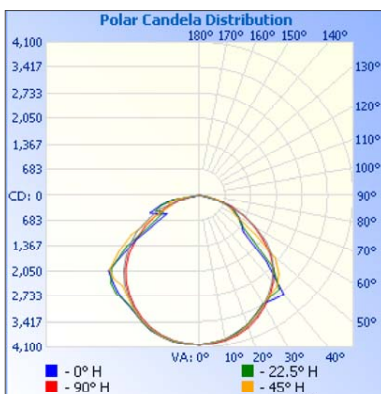
Illuminance at a distance

Center beam fc		Beam width	
1.7'	707 fc	4.3'	3.4'
3.3'	188 fc	8.3'	6.6'
5.0'	81.7 fc	12.6'	10.0'
6.7'	45.5 fc	16.9'	13.5'
8.3'	29.6 fc	20.9'	16.7'
10.0'	20.4 fc	25.2'	20.1'

Vert. spread: 103°
Horiz. spread: 90.3°

CDL-LS2-W-C/40K-T • 12 231 lm

Polar candela distribution



Zonal lumen summary

Zone	Lumens	% Fixture
0-30	3 160.4	27.8%
0-40	5 263.3	46.4%
0-60	9 356.8	82.4%
60-90	1 995.3	17.6%
0-90	11 352.10	100%

Illuminance at a distance

Center beam fc		Beam width	
1.7'	1 396 fc	4.3'	5.0'
3.3'	370 fc	8.3'	9.7'
5.0'	161 fc	12.5'	14.7'
6.7'	89.9 fc	16.8'	19.7'
8.3'	58.6 fc	20.8'	24.5'
10.0'	40.3 fc	25.1'	29.5'

Vert. spread: 102.9°
Horiz. spread: 111.7°

¹ Complete IES files available on our website.

CDLA-L

HAZARDOUS LOCATION LED LINEAR LUMINAIRE

Class I, Division 1, Groups C, D

Class I, Division 2, Groups A, B, C, D

Non recessed Marine luminaires, outside type (salt water)

The CDLA-L Hazardous Location LED linear luminaire is designed for installations where moisture, dirt, dust, corrosion and vibration may be present. The CDLA-L is also NEC/CEC certified to be used in hazardous environments where there is presence of flammable vapors or gases.

FEATURES AND SPECIFICATIONS

• Construction

Housing

Rugged and resilient housing made of a copper-free aluminum, corrosion resistant casting, with separated driver compartment for improved thermal management. All exposed fasteners are quality stainless steel. Available in a grey casting color and a superior electrostatic powder coating.

Temperature ratings

Based on the surface temperature of the fixture;

- Class I Division 1, Group C, D is rated T6
- Class I Division 2, Group A, B, C, D is rated T3C

Ambient operating temperature

-40°C to +60°C

Ambient operating humidity

10% ~ 90% RH

Lens and Optics

This luminaire is outfitted of a glass lens that comes in a transparent or a diffuse finish. Beam angles options of 60° and 110° are available as well as a type II distribution pattern.

• Electrical

Available in either S1 (40 W) or S2 (80 W) configurations with a lumen per watt ratio up to 133 lm/W. Driver input voltage is 120-277 V 50/60 Hz or 347 V 50/60 Hz with a power factor >0.95. Durable high LEDs with solder-less board connections for shock and vibration resistance. The CDLA-L is offered in either 3 000, 4 000 and 5 000 K, with a color rendering index (CRI) >70.

• NEC/CEC Standards

NEC500/CEC Section 18: Existing plants

- Hazloc B :
- Class I, Division 1, Groups C, D
- Class I, Division 2, Groups A, B, C, D

NEC505/CEC Section 18 Zones: New plants

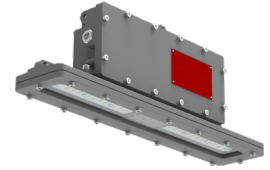
- Hazloc B
- Class I, Zone 1, Group IIB
- Class I, Zone 2, Group IIC

• Compliances

- Meets requirements of ICES-005 issue 4 for class A products
- 5G vibration resistant in compliance with IEC60598-1 standard, CL-4.20
- IP66
- UL1598A
- UL1598
- UL8750

OVERVIEW

Light source	LED
Watts (W)	40, 80
Lumen output (lm)	3 511 - 10 456
Efficiency (lm/W)	92 - 133
Color temperature (K)	3 000, 4 000, 5 000
CRI	>70



Not all products are qualified on the DLC QPL. To view our DLC qualified products, please consult the DLC Qualified Products List at www.designlights.org/search.

CDLA-L WITH EMERGENCY BACKUP

HAZARDOUS LOCATION LED LINEAR LUMINAIRE

Class I, Division 1, Groups C, D

Non recessed Marine luminaires, outside type (salt water)

The CDLA-L with emergency backup Hazardous Location LED linear luminaire is designed for installations where moisture, dirt, dust, corrosion and vibration may be present. The CDLA-L with emergency backup is also NEC/CEC certified to be used in hazardous environments where there is presence of flammable vapors or gases.

FEATURES AND SPECIFICATIONS

• Construction

Housing

Rugged and resilient housing made of a copper-free aluminum, corrosion resistant casting, with separated driver compartment for improved thermal management. All exposed fasteners are quality stainless steel. Available in a grey casting color and a superior electrostatic powder coating.

Temperature ratings

Based on the surface temperature of the fixture;
– Class I Division 1, Group C, D is rated T6

Ambient operating temperature

-20° to +45° C

Ambient operating humidity

10% ~ 90% RH

Battery

- 6 W (606 to 841 lumens)
- Discharge time : 90 min
- Charge time : 24 hours
- High-Temperature, Maintenance-Free
- Nickel-Cadmium Battery,
7 to 10 years life expectancy

Lens and Optics

This luminaire is outfitted of a glass lens that comes in a transparent or a diffuse finish. Beam angles options of 60° and 110° are available as well as a type II distribution pattern.

• Electrical

Available in S2 (80 W) configuration with a lumen per watt ratio up to 130 lm/W. Driver input voltage is 120-277 V 50/60 Hz or 347 V 50/60 Hz. Power factor >0.95. Durable high LEDs with solder-less board connections for shock and vibration resistance. The CDLA-L with emergency backup is offered in either 3 000, 4 000 and 5 000 K, with a color rendering index (CRI) >70.

• NEC/CEC Standards

NEC500/CEC Section 18: Existing plants

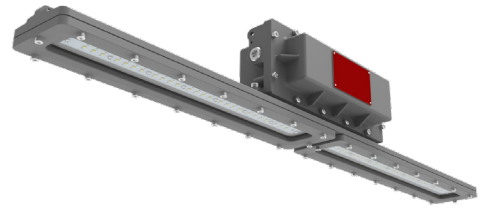
- Hazloc B :
– Class I, Division 1, Groups C, D

NEC505/CEC Section 18 Zones: New plants

- Hazloc B
– Class I, Zone 1, Group IIB

• Compliances

- Meets requirements of ICES-005 issue 4 for class A products
- 5G vibration resistant in compliance with IEC60598-1 standard, CL-4.20
- IP66
- UL924
- UL1598A
- UL1598
- UL8750



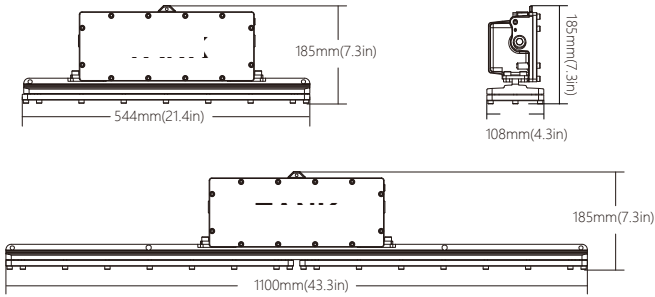
OVERVIEW

Light source	LED
Watts (W)	80
Lumen output (lm)	7 604 - 10 456
Efficiency (lm/W)	94 - 130
Color temperature (K)	3 000, 4 000, 5 000
CRI	>70

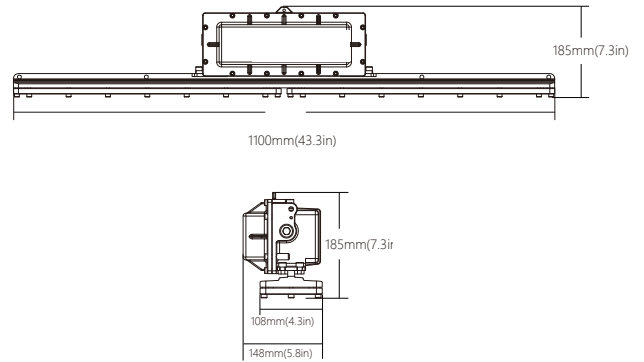


DIMENSIONS

Part number	Net weight (lbs)	Dimensions (LxWxH) (in)
CDLA-LS1	16.1	21.4 x 4.3 x 7.3
CDLA-LS2	23.8	43.3 x 4.3 x 7.3

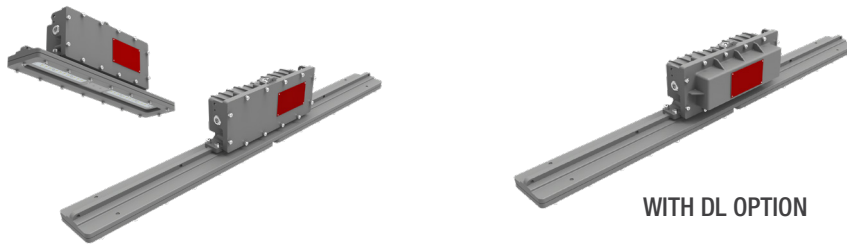


Part number	Net weight (lbs)	Dimensions (LxWxH) (in)
CDLA-LS2 (DL)	26.9	43.3 x 5.8 x 7.3



MOUNTING

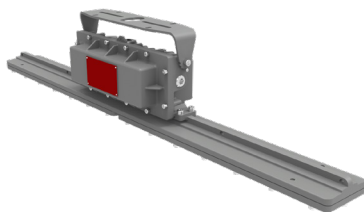
PENDANT (STANDARD)



ACCESSORIES REQUIRED FOR OPTIONAL MOUNTING

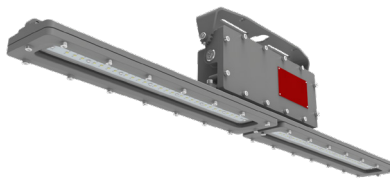
CEILING MOUNT

BKT761-LN



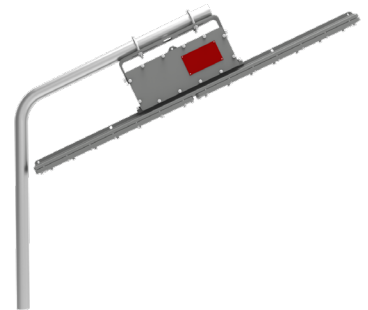
WALL MOUNT

BKT761-LN



POLE MOUNT

BKT775 + BKT761-LN



ORDERING GUIDE

Series	Lamp type	Lumen package	Volts (V)	Hazloc	Color temp. (K)	Beam angle	Lens option
CDLA	L - LED	S1 - Refer to the S2 - technical specifications table for details	W - 120-277 H - 347	B - Class I Division 1, Class I Division 2	3K - 3 000 4K - 4 000 5K - 5 000	I - 60° J - 110° K - Type II	D - Diffuse glass ¹ T - Transparent glass

¹ Only available with the 110° optic

ORDERING GUIDE - WITH EMERGENCY BACKUP

Series	Lamp type	Lumen package	Volts (V)	Hazloc	Color temp. (K)	Beam angle	Lens option	Option
CDLA	L - LED	S2 - Refer to the technical specifications table for details	W - 120-277	B - Class I Division 1	3K - 3 000 4K - 4 000 5K - 5 000	I - 60° J - 110° K - Type II	D - Diffuse glass ¹ T - Transparent glass	DL - Emergency backup ²

¹ Only available with the 110° optic

² External test switch supplied by others

ACCESSORIES (order separately)

Part number	Type
BKT775	Stanchion mount pipe clamp ¹
BKT761-LN	U-bracket

¹ Include 2 pipes per box.



BKT775
Stanchion mount pipe clamp



BKT761-LN
U-bracket

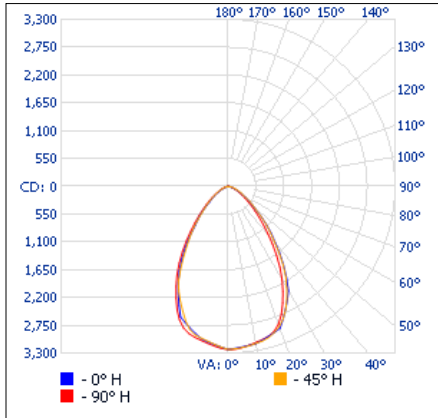
TECHNICAL SPECIFICATION TABLE

Lumen package	Optics	Lens type	Volts (VAC)	LED current (mA)	# of LEDs	Watts (W)	CRI	Lumens output (lm)	Efficiency (lm/w)	Life L70 (hrs)	Tested hours LM-80 (hrs)	Power factor	THD (%)
3 000 K													
S1	60°	TRANSPARENT	120-277	475	26	40	70	4 510.20	112.76	≥50000	9000	0.95	17
			347										
	110°		120-277					4 436.25	116.35				
	347												
TYPE II	120-277		4 485.21					112.13					
	347												
S2	60°	TRANSPARENT	120-277	500	52	80	70	9 732.99	121.66	≥50000	9000	0.95	13
			347										
	110°		120-277					9 546.14	117.11				
	347												
TYPE II	120-277		9 216.50					115.21					
	347												
S1	110°	DIFFUSE	120-277	475	26	40	70	3 511.23	92.38	≥50000	9000	0.95	17
	347												
S2	110°	DIFFUSE	120-277	500	52	80	70	7 604.9	93.5	≥50000	9000	0.95	13
	347												
4 000 K													
S1	60°	TRANSPARENT	120-277	475	26	40	70	4 614.69	115.37	≥50000	9000	0.95	17
			347										
	110°		120-277					4 472.25	117.97				
	347												
TYPE II	120-277		4 934.89					123.37					
	347												
S2	60°	TRANSPARENT	120-277	500	52	80	70	9 742.32	121.78	≥50000	9000	0.95	13
			347										
	110°		120-277					9 554.71	119.27				
	347												
TYPE II	120-277		9 849.62					123.12					
	347												
S1	110°	DIFFUSE	120-277	475	26	40	70	3 511.15	93.02	≥50000	9000	0.95	17
	347												
S2	110°	DIFFUSE	120-277	500	52	80	70	7 520.41	94.17	≥50000	9000	0.95	13
	347												
5 000 K													
S1	60°	TRANSPARENT	120-277	475	26	40	70	5 356.11	133.90	≥50000	9000	0.95	17
			347										
	110°		120-277					4 800.00	120.00				
	347												
TYPE II	120-277		5 118.43					123.91					
	347												
S2	60°	TRANSPARENT	120-277	500	52	80	70	10 456.80	130.71	≥50000	9000	0.95	13
			347										
	110°		120-277					9 600.00	120.00				
	347												
TYPE II	120-277		10 249.5					128.82					
	347												
S1	110°	DIFFUSE	120-277	475	26	40	70	3 897.10	97.59	≥50000	9000	0.95	17
	347												
S2	110°	DIFFUSE	120-277	500	52	80	70	8 035.08	98.59	≥50000	9000	0.95	13
	347												

PHOTOMETRIC DATA¹

CDLA-LS1-W-B-4K-I-T • 4 615.7 lm

Polar candela distribution



Zonal lumen summary

Zone	Lumens	% Fixture
0-30	2 281.5	49.4%
0-40	3 308.7	71.7%
0-60	4 365.8	94.6%
60-90	249.9	5.4%
0-90	4 615.7	100%

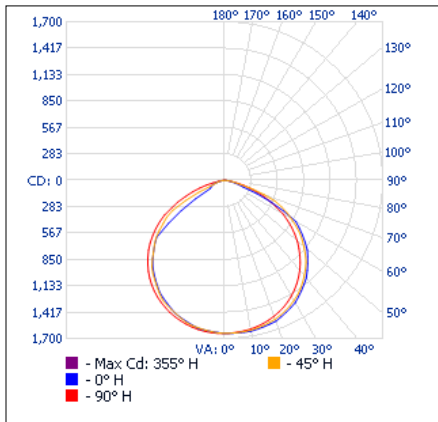
Illuminance at a distance

Center beam fc	Beam width	
	ft	m
8.3'	46.8	12.0' 11.7'
16.7'	11.6	24.1' 23.4'
25.0'	5.16	36.1' 35.1'
33.3'	2.91	48.1' 46.8'
41.7'	1.86	60.2' 58.5'
50.0'	1.29	72.2' 70.2'

■ Vert. spread: 71.6°
■ Horiz. spread: 70.1°

CDLA-LS1-W-B-4K-J-T • 4 472.8 lm

Polar candela distribution



Zonal lumen summary

Zone	Lumens	% Fixture
0-30	1 302.5	29.1%
0-40	2 157.2	48.2%
0-60	3 827.0	85.6%
60-90	645.8	14.4%
0-90	4 472.8	100%

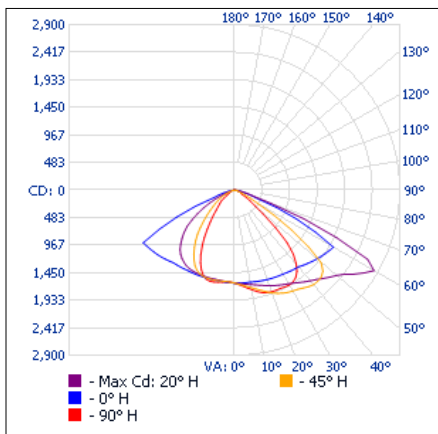
Illuminance at a distance

Center beam fc	Beam width	
	ft	m
8.3'	23.9	24.9' 25.7'
16.7'	5.89	50.1' 51.8'
25.0'	2.63	75.0' 77.6'
33.3'	1.48	99.9' 103.3'
41.7'	0.95	125.0' 129.4'
50.0'	0.66	149.9' 155.1'

■ Vert. spread: 112.6°
■ Horiz. spread: 114.4°

CDLA-LS1-W-B-4K-K-T • 4 935.5 lm

Polar candela distribution



Zonal lumen summary

Zone	Lumens	% Fixture
0-30	1 434.4	29.1%
0-40	2 439.0	49.4%
0-60	4 365.6	88.5%
60-90	569.9	11.5%
0-90	4 935.5	100%

Illuminance at a distance

Center beam fc	Beam width	
	ft	m
8.3'	23.7	36.8' 4.8'
16.7'	5.85	74.0' 9.7'
25.0'	2.61	110.8' 14.5'
33.3'	1.47	147.6' 19.4'
41.7'	0.94	184.9' 24.3'
50.0'	0.65	221.7' 29.1'

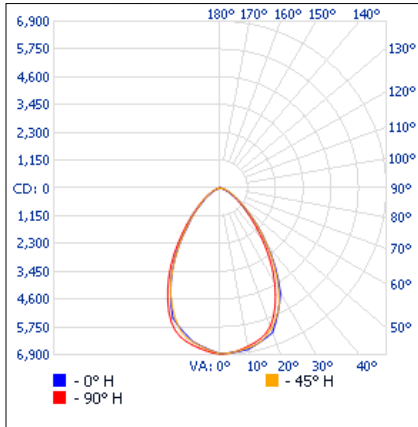
■ Vert. spread: 131.4°
■ Horiz. spread: 32.4°

¹ Complete IES files available on our website.

PHOTOMETRIC DATA¹ (CONTINUED)

CDLA-LS2-W-B-4K-I-T • 9 744.5 lm

Polar candela distribution



Zonal lumen summary

Zone	Lumens	% Fixture
0-30	4 818.2	49.4%
0-40	6 981.6	71.7%
0-60	9 215.5	94.6%
60-90	528.9	5.4%
0-90	9 744.5	100%

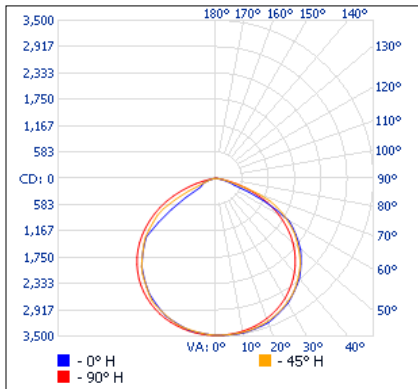
Illuminance at a distance

Center beam fc	Beam width	
	11.8'	11.7'
8.3'	99.5	23.5'
16.7'	24.6	35.2'
25.0'	11.0	46.9'
33.3'	6.18	58.7'
41.7'	3.94	70.4'
50.0'	2.74	

■ Vert. spread: 70.8°
■ Horiz. spread: 70.3°

CDLA-LS2-W-B-4K-J-T • 9 555.8 lm

Polar candela distribution



Zonal lumen summary

Zone	Lumens	% Fixture
0-30	2 761.3	28.9%
0-40	4 577.4	47.9%
0-60	8 143.7	85.2%
60-90	1 412.2	14.8%
0-90	9 555.8	100%

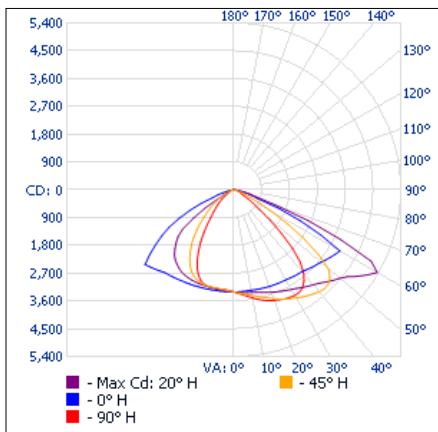
Illuminance at a distance

Center beam fc	Beam width	
	24.9'	25.7'
8.3'	23.9	77.6'
16.7'	5.89	103.3'
25.0'	2.63	129.4'
33.3'	1.48	155.1'
41.7'	0.95	
50.0'	0.66	

■ Vert. spread: 112.6°
■ Horiz. spread: 114.4°

CDLA-LS2-W-B-4K-K-T • 9 850.4 lm

Polar candela distribution



Zonal lumen summary

Zone	Lumens	% Fixture
0-30	2 868.0	29.1%
0-40	4 900.3	49.7%
0-60	8 774.9	89.1%
60-90	1 075.5	10.9%
0-90	9 850.4	100%

Illuminance at a distance

Center beam fc	Beam width	
	34.4'	5.5'
8.3'	48.0	11.0'
16.7'	11.9	16.5'
25.0'	5.29	21.9'
33.3'	2.98	27.4'
41.7'	1.90	32.9'
50.0'	1.32	

■ Vert. spread: 128.4°
■ Horiz. spread: 36.4°

¹ Complete IES files available on our website.

VX4-L

CLASS I, DIVISION 2 & CLASS III, DIVISION 1 & 2 HAZARDOUS LOCATION LED VAPOUR TIGHT

The VX4-L sealed 4' linear luminaire is designed for use in hazardous locations when gases and liquids may be present. Acetylene, hydrogen, ether, hydrocarbons, fuels, solvents etc. that are not normally present in an explosive concentration (but may accidentally exist).

FEATURES AND SPECIFICATIONS

• Applications

- Clean rooms
- Locker rooms
- Computer areas
- Fuel storage areas
- Chemical processing facility
- Petrochemical processing facility
- Loading docks

• Construction

Housing

- The housing is constructed from a one piece glass reinforced white fiberglass
- A closed cell, high temperature poured in place gasket and polycarbonate latches seal the enclosure from most hostile environments
- The low profile housing is available in 4'

Lens

The fixture comes standard with an impact resistant acrylic frosted lens.

• Specifications

- Wash down design
- Very durable
- Easy to clean and service
- LED technology for long term energy savings
- Stainless steel latches are available
- The luminaire enclosure was found to be in compliance with the indicated requirements of Enclosures for Electrical Equipment NEMA 4X

Driver

- 120-277 V and 347 V
- 0-10 V dimming driver standard

Ambient temperature

-40° to +40°C

Mounting

Ceiling mounting brackets and mounting ball brackets for suspended mount included. Hardware in stainless steel.

• Compliances

- Class I - Division 2, Groups A, B, C and D, T5 ambient 40°C
- Class III - Division 1 & 2, T5 ambient 40°C
- Hazardous location
- Suitable for damp and wet location
- IP66
- IP67
- 1500 PSI: High pressure hose down test (1.3 gallon per minute for 3 minutes at 1.5-2.0' from the unit) to maintain the integrity of the fixture. No water ingress is allowed
- NSF
- Compliant with Nema 4X
- Meets requirements of ICES-005
- CSA certified to C22.2 #250.0, #250.13, #137
- CSA
- UL1598, UL8750



OVERVIEW

Light source	DEL
Watts (W)	31-79
Lumen output (lm)	3 797 - 1 0047
Efficiency (lm/W)	96- 143
Color temperature (K)	3 000, 3 500, 4 000, 5 000
CRI	80+
Weight (lbs)	14.15

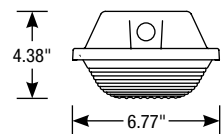
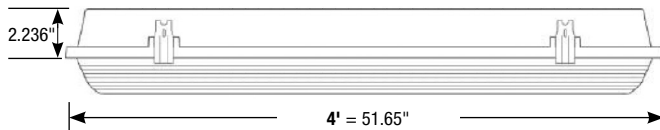
ORDERING GUIDE

Series	Lamp type	Lumen package delivered	CRI	Volts (V)	Color temp. (K)	Options
VX4	L - LED	S1A - } S2A - } S3A - } S4A - }	80 - 80 90 - 90	H - 347 W - 120-277	30K - 3 000 35K - 3 500 40K - 4 000 50K - 5 000	SS - Stainless steel latches KV - 10kV surge protector DL - Emergency back up (0°C-25°C) PC - Polycarbonate ribbed frosted lens SFAL - Smooth frosted acrylic lens SFPL - Smooth frosted polycarbonate lens TP - Vandal resistant screws L6 - 6' white power cord L10 - 10' white power cord AC - Aviation cable kit RGB-45 - Wall mount bracket (45°) L6-BK - 6' black power cord L10-BK - 10' black power cord

TECHNICAL SPECIFICATION TABLE

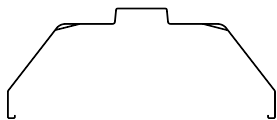
Lumen package	Watts (W)	Volts (V)	3 000 K		3 500 K		4 000 K		5 000 K		CRI	Life L70 (hrs)	Tested hours LM-80 (hrs)	Power factor	THD (%)
			Lumen (lm)	Efficiency (lm/W)	Lumen (lm)	Efficiency (lm/W)	Lumen (lm)	Efficiency (lm/W)	Lumen (lm)	Efficiency (lm/W)					
S1A	31	120-277 347	3 797	124	3 889	127	3 862	99	4 141	135	80+	189 000	10 000	0.97	11
S2A	40		5 223	131	5 349	134	7 132	96	5 695	143	80+	189 000	10 000	0.97	11
S3A	60		7 314	123	7 490	126	7 703	126	7 976	134	80+	189 000	10 000	0.98	9
S4A	79		9 212	117	9 435	120	9 703	120	10 047	128	80+	189 000	10 000	0.98	10

DIMENSIONS



Class I, Division II,
connector not supplied.

CEILING MOUNTING BRACKETS¹



BAIL BRACKETS¹

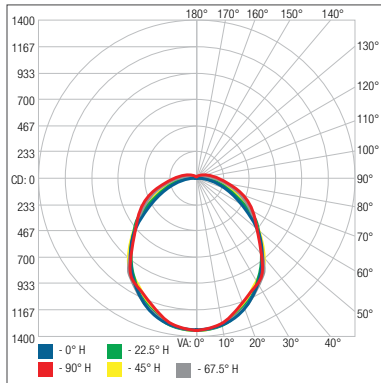


¹ Included

PHOTOMETRIC DATA¹

VX4-LS1-(W/H)/40K • 3 862.2lm

Polar candela distribution



Zonal lumen summary

Zone	Lumens	% Fixture
0-30	1 006.6	26.1
0-40	1 635.5	42.3
0-60	2 804.4	72.6
60-90	871.5	22.6
70-100	542.5	14
90-120	174.9	4.5
0-90	3 676.0	95.2
90-180	186.2	4.8
0-180	3 862.2	100

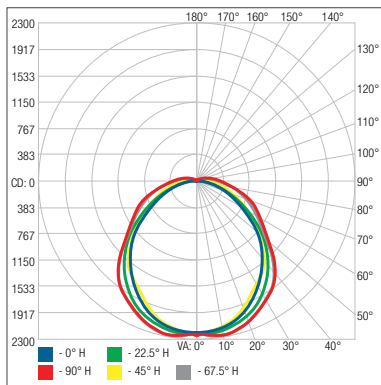
Illuminance at a distance

	Center beam fc	Beam width	
2.0'	336.8	4.9'	5.2'
4.0'	84.2	9.8'	10.4'
6.0'	37.4	14.7'	15.6'
8.0'	21.0	19.5'	20.8'
10.0'	13.5	24.4'	26.0'

■ Vert. spread: 101.4°
■ Horiz. spread: 104.9°

VX4-LS3-(W/H)/40K • 7 131.8lm

Polar candela distribution



Zonal lumen summary

Zone	Lumens	% Fixture
0-30	1 774.0	24.9
0-40	2 918.0	40.9
0-60	5 106.6	71.6
60-90	1 648.0	23.1
70-100	1 044.7	14.6
90-120	357	5
0-90	6 754.6	94.7
90-180	377.3	5.3
0-180	7 131.8	100

Illuminance at a distance

	Center beam fc	Beam width	
2.0'	551.8	5.2'	6.0'
4.0'	137.9	10.4'	12.0'
6.0'	61.3	15.6'	17.9'
8.0'	34.5	20.8'	23.9'
10.0'	22.1	26.0'	29.9'

■ Vert. spread: 104.8°
■ Horiz. spread: 112.4°

¹ Complete IES files available on our website.

CDA-L

HAZARDOUS LOCATION HIGH BAY

Class I, Division 2, Groups A, B, C, D

Class II, Division 1, Groups E, F, G

Class II, Division 2, Groups F, G

Non recessed marine luminaires, outside type (salt water)

The CDA-L Hazardous Location LED high bay is designed for installations where moisture dirt dust corrosion and vibration may be present or in NEMA 3 and 4X locations where wind water snow or high ambient temperatures can be expected. The CDA-L is also NEC/CEC certified to be used in hazardous environments where there is presence of flammable vapours or gases or combustible dusts.

FEATURES AND SPECIFICATIONS

• Construction

Housing

Rugged and resilient housing made of a copper-free aluminum corrosion resistant casting with separated driver compartment for improved thermal management. All exposed fasteners are quality stainless steel as well as high temperature quality silicone gasketing. Available in a grey casting color and a superior electrostatic powder coating.

Temperature ratings

Based on the surface temperature of the fixture ;

– Class I Division 2 is rated T4A, except for all the configurations that are 40 W and 347V (will not exceed 120°C)

– Class II Division 1 Division 2 & Class III are rated T5 (will not exceed 100°C)

Ambient operating temperature

-40°C to +55°C

All the configurations 60 W and 347 V have an ambient operating temperature of -40°C to + 45°C

Ambient operating humidity

5% ~ 95% RH

Optics

Comes standard with a thermal shock and impact resistant tempered glass lens and is available in a flat or a drop lens. Offered in a clear finish with a 110° beam angle and a diffuse finish is also available in option. The drop lens have a 130° beam angle.

• Electrical

Available in either S1 (45 W) or S2 (65 W) configurations with a lumen per watt ratio of 118 to 171 lm/W. Driver input voltage are 120-277 V or 347 V 50/60Hz are non-dimmable and have 4 kV integrated transient surge protection with a power factor >0.95. Durable high powered LUXEON LEDs with solder-less board connections for shock and vibration resistance. The CDA-L is offered in either 3 000, 4 000 or 5 000 K with a color rendering index (CRI) >70.

• NEC/CEC Standards

NEC500/CEC Section 18: Existing plants

Hazloc C

- Class I, Division 2, Groups A, B, C, D
- Class II, Division 1, Groups E, F, G
- Class II, Division 2, Groups F, G

NEC505/CEC Section 18 Zones: New plants

Hazloc C

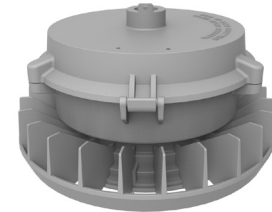
- Class I, Zone 2, Group IIC
- Zone 21

• Compliances

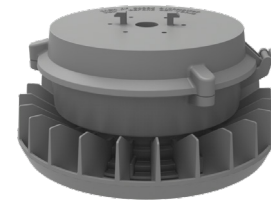
- Meets requirements of ICES-005 issue 4 for class A products
- 5G vibration resistant in compliance with IEC60598-1 standard, CL-4.20
- IK07 (drop lens)
- IK08 (flat lens)
- UL Standards
- UL1598A
- UL1598
- UL844
- UL8750
- CSA Standards
- CSA C22.2 No.250.0 250.13
- CSA C22.2 No.137

OVERVIEW

Light source	LED
Watts (W)	45 - 65 (120-277 V) 40 - 60 (347 V)
Lumen output (lm)	4 790 - 10 654
Efficiency (lm/W)	118 - 171
Color temperature (K)	3 000, 4 000, 5 000
CRI	>70
Weight (lbs)	9.26



Pendant adapter



Ceiling/Wall stanchion adapter



quick ship



LED fixture



ICES 005



IK07

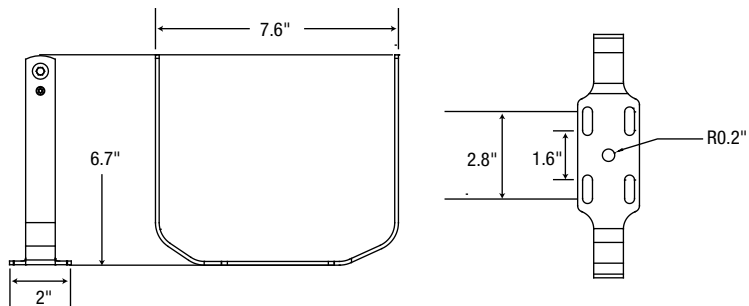


IK08

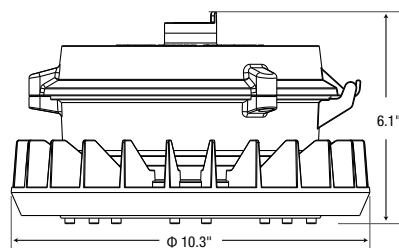


Not all products are qualified on the DLC QPL. To view our DLC qualified products, please consult the DLC Qualified Products List at www.designlights.org/search.

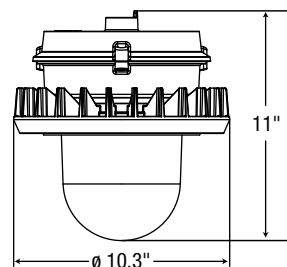
DIMENSIONS



WITH FLAT LENS GLASS



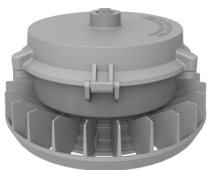
WITH DROP LENS



Part number	Net weight (lbs)	Dimensions (LxWxH)
CDA-LS1	9.26	10.2 x 5.9"
CDA-LS2		

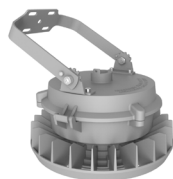
MOUNTINGS

PENDANT (standard)
MOUNTING ADAPTER "P"

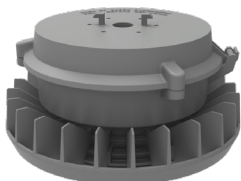


ACCESSORIES REQUIRED FOR OPTIONAL MOUNTING

CEILING/ WALL MOUNT
BKT761-HB



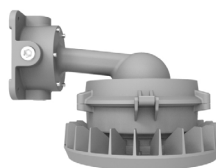
CEILING/WALL STANCHION (optional adapter)
MOUNTING ADAPTER "J"



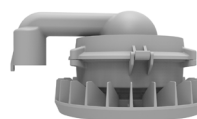
CEILING MOUNT
JB018



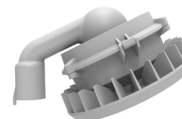
WALL MOUNT
BKT771-25 or
BKT771-90



POLE MOUNT
BKT773-P166 or
BKT773-P1900



POLE MOUNT
BKT772-P166 or
BKT772-P1900



QUICK SHIP AND TECHNICAL SPECIFICATION TABLE

Part number	DLC unique ID	Watts (W)	Color temp. (K) ²	Lumen output (lm) ³	Efficiency (lm/W)	CRI	Life L70 (hrs) ⁴	Tested hours LM-80 (hrs) ⁴	LED current (mA)	Power factor	THD (%)	B.U.G. rating	Beam angle (°)	Case qty (master)
120-277 V - Pendant														
CDA-LS1-W-C/40K-TP	PL5EK4WNJUT	45	4 000	6 750	140	70	54 000	9 000	42	1.00	13	B4-U0-G1	110	1
CDA-LS2-W-C/40K-TP	PLMFRG32T7AB	65	4 000	9 750	144	70	54 000	9 000	43	0.99	11	B4-U0-G1	110	1
CDA-LS1-W-C/50K-TP	PLOGIV5NHX51	45	5 000	6 750	150	70	54 000	9 000	42	1.00	13	B4-U0-G1	110	1
CDA-LS2-W-C/50K-TP	PLQAXAKUYXCF	65	5 000	9 750	150	70	54 000	9 000	43	0.99	11	B4-U0-G1	110	1
120-277 V - Ceiling / Wall stanchion														
CDA-LS1-W-C/40K-TJ	PL5EK4WNJUT	45	4 000	6 750	140	70	54 000	9 000	42	1.00	13	B4-U0-G1	110	1
CDA-LS2-W-C/40K-TJ	PLMFRG32T7AB	65	4 000	9 750	144	70	54 000	9 000	43	0.99	11	B4-U0-G1	110	1
CDA-LS1-W-C/50K-TJ	-	45	5 000	6 750	150	70	54 000	9 000	42	1.00	13	B4-U0-G1	110	1
CDA-LS2-W-C/50K-TJ	-	65	5 000	9 750	150	70	54 000	9 000	43	0.99	11	B4-U0-G1	110	1
347 V - Pendant														
CDA-LS1-H-C/40K-TP	-	45	4 000	6 750	157	70	54 000	9 000	37	0.97	13	B4-U0-G1	110	1
CDA-LS2-H-C/40K-TP	-	65	4 000	9 750	169	70	54 000	9 000	41	0.98	11	B4-U0-G1	110	1
CDA-LS1-H-C/50K-TP	-	45	5 000	6 750	156	70	54 000	9 000	37	0.97	13	B4-U0-G1	110	1
CDA-LS2-H-C/50K-TP	-	65	5 000	9 750	171	70	54 000	9 000	41	0.98	11	B4-U0-G1	110	1
347 V - Ceiling / Wall stanchion														
CDA-LS1-H-C/40K-TJ	-	45	4 000	6 750	157	70	54 000	9 000	37	0.97	13	B4-U0-G1	110	1
CDA-LS2-H-C/40K-TJ	-	65	4 000	9 750	169	70	54 000	9 000	41	0.98	11	B4-U0-G1	110	1
CDA-LS1-H-C/50K-TJ	-	45	5 000	6 750	156	70	54 000	9 000	37	0.97	13	B4-U0-G1	110	1
CDA-LS2-H-C/50K-TJ	-	65	5 000	9 750	171	70	54 000	9 000	41	0.98	11	B4-U0-G1	110	1

¹ **QUICK SHIP:** Product availability is subject to change without notice. Please contact your Stanpro customer service representative to confirm inventory levels at time of order.

² Typical color temperature range: +/- 5 %.

³ Lumen values are derived from photometric testing. Initial lumens range: +/- 10 %.

⁴ Life hours are derived from IESNA LM-80-08 testing report and projected per IESNA TM-21-11 extrapolations.

ORDERING GUIDE

Series	Lamp type	Lumen package	Volt (V)	Hazloc	Color temp. (K)	Lens option	Mounting adapter
CDA	L - LED	S1 - Refer to S2 - technical specification table for details	W - 120-277 H - 347	C - Class I Division 2 Class II Division 1 Class II Division 2 Class III	30K - 3 000 40K - 4 000 50K - 5 000	D - Diffuse tempered glass T - Transparent tempered glass L - Drop lens tempered glass	P - NPT 3/4" pendant J ¹ - Ceiling/Wall stanchion

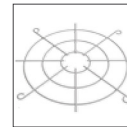
¹ See section below titled "Accessories for use with J mounting adapter" to choose your installation option

ACCESSORIES (order separately) to be used with "P" mounting adapter

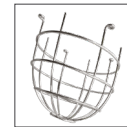
Part number	Type
BKT761-HB	U-Bracket (SUS 304)
WGD070	Stainless steel wire guard
WGD071	Stainless steel wire guard for drop lens
HAR1056	Stainless steel safety cable kit



BKT761-HB
U-Bracket (SUS 304)



WGD070
Stainless steel wire guard



WGD071
Stainless steel wire guard for drop lens



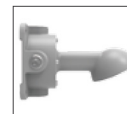
HAR1056
Stainless steel safety cable kit

ACCESSORIES (order separately) to be used with "J" mounting adapter

Part number	Type
JB018	Junction box NPT 3/4"
BKT771-25	Wall mount-25°
BKT771-90	Wall mount-90°
BKT772-P166	Stanchion-25° (NPT 1.25")
BKT772-P1900	Stanchion-25° (NPT 1.50")
BKT773-P166	Stanchion-90° (NPT 1.25")
BKT773-P1900	Stanchion-90° (NPT 1.50")
WGD070	Stainless steel wire guard
WGD071	Stainless steel wire guard for drop lens
HAR1056	Stainless steel safety cable kit



JB018
Junction box NPT 3/4"



BKT771-25
Wall mount 25°



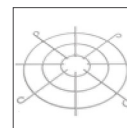
BKT771-90
Wall mount 90°



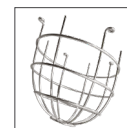
BKT772-P166 or BKT772-P1900
Stanchion-25°



BKT773-P166 or BKT773-P1900
Stanchion-90°



WGD070
Stainless steel wire guard



WGD071
Stainless steel wire guard for drop lens



HAR1056
Stainless steel safety cable kit

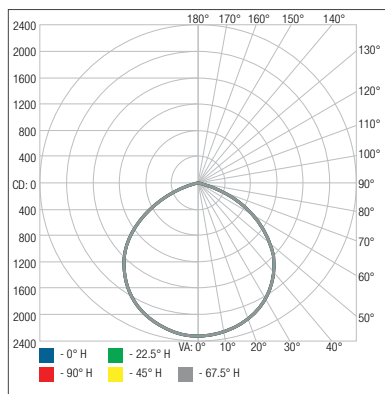
TECHNICAL SPECIFICATION TABLE

Lumen package	Volts (VAC)	Lens type	LED current (mA)	# of LEDs	Watts (W)	CRI	Lumens output (lm)	Efficiency (lm/w)	Life L70 (hrs)	Tested hours LM80 (hrs)	Power factor	THD (%)	B.U.G. rating
3 000 K													
S1	120-277	Transparent	42	40	45	70	6 483	140	54 000	9 000	1.00	13	B4-U0-G1
	347		37	40	40	70	5 752	144	54 000	9 000	0.97	13	B4-U0-G1
S2	120-277		43	60	65	70	9 620	148	54 000	9 000	1.00	11	B4-U0-G1
	347		41	60	60	70	9 151	155	54 000	9 000	0.98	11	B4-U0-G1
S1	120-277	Diffuse	42	40	45	70	5 447	121	54 000	9 000	1.00	13	B4-U0-G1
	347		37	40	40	70	4 943	132	54 000	9 000	0.97	13	B4-U0-G1
S2	120-277		43	60	65	70	8 062	124	54 000	9 000	0.99	11	B4-U0-G1
	347		41	60	60	70	7 795	132	54 000	9 000	0.98	11	B4-U0-G1
S1	120-277	Drop Lens	42	40	45	70	5 520	129	54 000	9 000	1.00	13	B4-U0-G1
	347		37	40	40	70	4 790	120	54 000	9 000	0.97	13	B4-U0-G1
S2	120-277		43	60	65	70	8 193	125	54 000	9 000	0.99	11	B4-U0-G1
	347		41	60	60	70	7 554	127	54 000	9 000	0.98	11	B4-U0-G1
4 000 K													
S1	120-277	Diffuse	42	40	45	70	5 295	118	54 000	9 000	1.00	13	B4-U0-G1
	347		37	40	40	70	5 353	135	54 000	9 000	0.97	13	B4-U0-G1
S2	120-277		43	60	65	70	7 963	123	54 000	9 000	0.99	11	B4-U0-G1
	347		41	60	60	70	8 533	146	54 000	9 000	0.98	11	B4-U0-G1
S1	120-277	Drop Lens	42	40	45	70	5 963	140	54 000	9 000	1.00	13	B4-U0-G1
	347		37	40	40	70	5 164	130	54 000	9 000	0.97	13	B4-U0-G1
S2	120-277		43	60	65	70	8 935	137	54 000	9 000	0.99	11	B4-U0-G1
	347		41	60	60	70	8 273	141	54 000	9 000	0.98	11	B4-U0-G1
5 000 K													
S1	120-277	Diffuse	42	40	45	70	5 767	128	54 000	9 000	1.00	16	B4-U0-G1
	347		37	40	40	70	5 248	133	54 000	9 000	0.89	16	B4-U0-G1
S2	120-277		43	60	65	70	8 642	133	54 000	9 000	0.99	9	B4-U0-G1
	347		41	60	60	70	8 539	146	54 000	9 000	0.89	9	B4-U0-G1
S1	120-277	Drop Lens	42	40	45	70	5 760	137	54 000	9 000	1.00	13	B4-U0-G1
	347		37	40	40	70	5 063	129	54 000	9 000	0.97	13	B4-U0-G1
S2	120-277		43	60	65	70	8 961	138	54 000	9 000	0.99	11	B4-U0-G1
	347		41	60	60	70	8 262	141	54 000	9 000	0.98	11	B4-U0-G1

PHOTOMETRIC DATA¹

CDA-LS1-W-C/40K-T • 6 289.0 lm

Polar candela distribution



Zonal lumen summary

Zone	Lumens	% Fixture
0-30	1 829.0	29.1%
0-40	3 018.5	48%
0-60	5 338.3	84.9%
60-90	950.6	15.1%
0-90	6 289.0	100%

Illuminance at a distance

Center beam fc		Beam width	
1.7'	804 fc	5.1'	5.0'
3.3'	213 fc	9.9'	9.6'
5.0'	93.0 fc	14.9'	14.6'
6.7'	51.8 fc	20.0'	19.5'
8.3'	33.7 fc	24.8'	24.2'
10.0'	23.2 fc	29.9'	29.2'

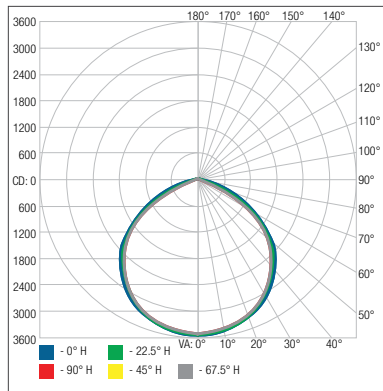
■ Vert. spread: 112.4°
■ Horiz. spread: 111.1°

¹ Complete IES files available on our website.

PHOTOMETRIC DATA¹ (cont'd)

CDA-LS2-W-C/40K-T • 9 337.9 lm

Polar candela distribution



Zonal lumen summary

Zone	Lumens	% Fixture
0-30	2 777.8	29.7%
0-40	4 572.2	49%
0-60	8 007.4	85.8%
60-90	1 330.4	14.2%
0-90	9 337.9	100%

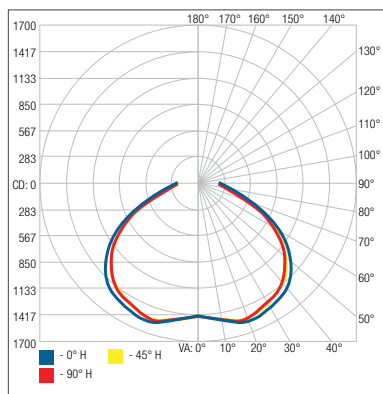
Illuminance at a distance

Center beam fc	Beam width	
	5.1'	4.7'
1.7'	1 230 fc	9.9'
3.3'	326 fc	15.1'
5.0'	142 fc	20.2'
6.7'	79.2 fc	25.0'
8.3'	51.6 fc	30.1'
10.0'	35.5 fc	30.1'

Vert. spread: 112.8°
Horiz. spread: 108.2°

CDA-LS1-W-C/40K-L • 5 962.9 lm

Polar candela distribution



Zonal lumen summary

Zone	Lumens	% Fixture
0-30	1 294.9	21.7%
0-40	2 236.8	37.5%
0-60	4 340.1	72.8%
60-90	1 622.8	27.2%
0-90	5 962.9	100%

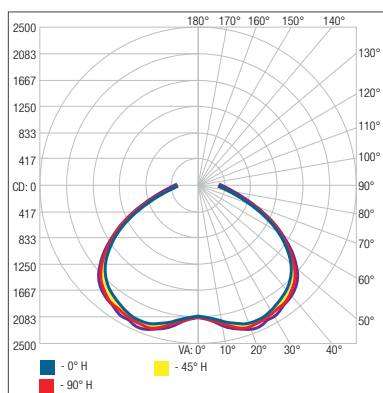
Illuminance at a distance

Center beam fc	Beam width	
	67.0'	73.8'
1.7'	4.98 fc	134.1'
3.3'	1.24 fc	201.1'
5.0'	0.55 fc	268.2'
6.7'	0.31 fc	335.2'
8.3'	0.20 fc	402.3'
10.0'	0.14 fc	402.3'

Vert. spread: 126.2°
Horiz. spread: 130.5°

CDA-LS2-W-C/40K-L • 8 934.6 lm

Polar candela distribution



Zonal lumen summary

Zone	Lumens	% Fixture
0-30	1 940.3	21.7%
0-40	3 359.0	37.6%
0-60	6 502.7	72.8%
60-90	2 431.9	27.2%
0-90	8 934.6	100%

Illuminance at a distance

Center beam fc	Beam width	
	67.6'	67.8'
1.7'	7.21 fc	135.3'
3.3'	1.80 fc	202.9'
5.0'	0.80 fc	270.6'
6.7'	0.45 fc	338.2'
8.3'	0.29 fc	405.9'
10.0'	0.20 fc	406.8'

Vert. spread: 126.6°
Horiz. spread: 126.7°

¹ Complete IES files available on our website.

RMY

HAZARDOUS LOCATION

Class I, Division 1 & 2, Groups C & D, Zone 1 & 2, Groups IIA & IIB

AC, AC/DC

120/347 VAC Input

The RMY series of hazardous location running man signs are designed to meet and exceed the most stringent code requirements. The housings are made from copper free, heavy-duty die cast aluminum. The frame and faceplate(s) are manufactured in heavy gauge steel with a white, powder coating finish. The signs can be specified to suit a variety of mounting options including ceiling, wall and pendant mount.

FEATURES AND SPECIFICATIONS

- **Circuitry - AC & AC/DC**

- LED ultra bright light source
- Input voltages 120/347 VAC
- Emergency back-up voltage : 6 V, 12 V or 24 VDC

- **Mechanical**

- Die cast, copper free aluminum, white or raw aluminum finish (depends on rating/type)
- Steel Running man sign, white powder coat finish standard
- Wiring pre-pulled through fixture
- Wall and ceiling models c/w integrated die cast junction box
- Junction box c/w oversized integral mounting holes and tapped and plugged rigid holes
- Comes standard with a transfer panel for hazardous locations
- TSFN enclosure must be installed/located outside the classified hazardous location
- Temperature code: T6

- **Approvals**

- CSA Certified to C22.2 #137
- CSA Certified to C22.2 #141-15
- CSA Certified to C860-11
- Class I, Division 1 & 2, Groups C & D
- Class I, Zone 1 & 2, Groups IIA & IIB

- **Compliance**

- Meets requirements of ICES-005



OVERVIEW

Light source	LED
Input voltage (VAC)	120/347
Input power (W)	4.8
DC Volts (VDC)	6, 12, 24
DC power (W)	3.4



LED
fixture



hazardous
location



ICES
005

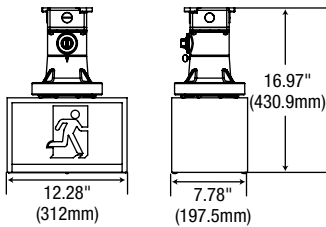


ORDERING GUIDE

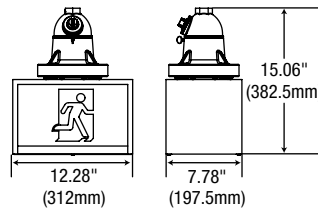
RMY		1	1	CD			/
Series	Nbr of faces	Class	Div.	Group	DC Volts (V)	Mounting	Options
RMY	1 - Single face 2 - Double face	1	1	C D	Blank - AC only 06 - 6 12 - 12 24 - 24	CM - Ceiling mount PM - Pendant mount WM - Wall mount	OP - Special wording or graphic 0 - No indicators (double face only) ↓ ↑ ↗ ↘ ↙ ↘ D U UR DR DL UL

MOUNTING

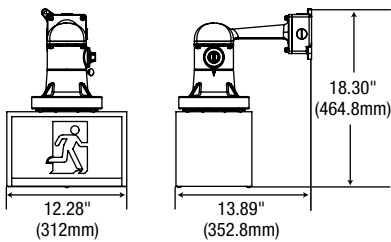
CEILING



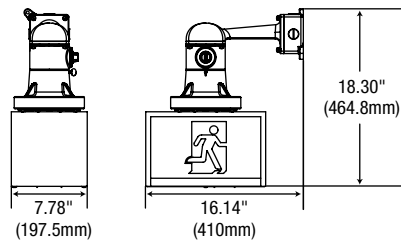
PENDANT



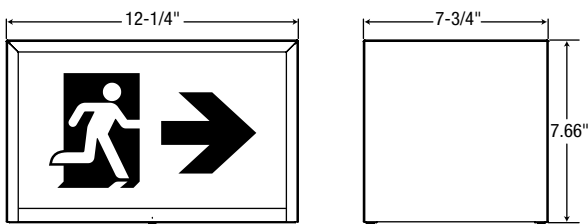
WALL - SINGLE FACE



WALL - DOUBLE FACE



DIMENSIONS



CONFIGURATIONS



Comes standard with three pictogram legends for direction selection.



SLEXY-SLSRY

HAZARDOUS LOCATION

Class I, Division 1, Groups C & D, Zone 1 & 2, Groups IIA & IIB

AC, AC/DC

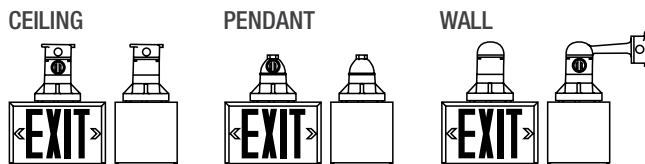
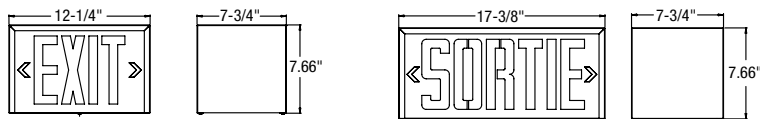
120/347VAC Input

The SLEXY and SLSRY series of hazardous location exit signs is designed to meet and exceed the most stringent code requirements. The housings are made from copper free, heavy-duty die cast aluminum. The frame and faceplate(s) are manufactured in heavy gauge steel with a white, powder coating finish. The signs can be specified to suit a variety of mounting options including ceiling, wall and pendant mount.

FEATURES AND SPECIFICATIONS

- **Circuitry - AC & AC/DC**
 - LED ultra bright light source
 - Input voltages 120/347VAC
 - Emergency back-up voltage: 6V, 12V or 24VDC
- **Mechanical**
 - Die cast, copper free aluminum, white or raw aluminum finish
 - Steel exit sign, white powder coat finish standard
 - Snap out directional chevrons/arrows
 - Wiring pre-pulled through fixture
 - Wall and ceiling models c/w integrated die cast junction box
 - Junction box c/w oversized integral mounting holes and tapped and plugged rigid holes
 - Comes with a transfer panel for hazardous locations (for AC/DC versions)
 - TSFN enclosure must be installed/located outside the classified hazardous location
 - Temperature code: T6
- **Approvals**
 - CSA Certified to C22.2 #137
 - CSA Certified to C22.2 #141-15
 - CSA Certified to C860-11
 - Class I, Division 1, Groups C & D
 - Class I, Zone 1 & 2, Groups IIA & IIB

MOUNTING & DIMENSIONS



ORDERING GUIDE

Series	Nbr of faces	Class	Div.	Group	DC Voltage	Mounting	Options [†]
SLEXY - Exit	1 - Single face	1	1	C	Blank - AC only	CM - Ceiling mount	OP - Special wording or graphic
SLSRY - Sortie	2 - Double face			D	06 - 6V 12 - 12V 24 - 24V	PM - Pendant mount WM - Wall mount	TSFN - Transfer Panel for AC & DC Signs

[†] For detailed options descriptions, please consult the options page.



OVERVIEW

Light source	LED
Input voltage	120/347VAC
DC input voltage	6VDC, 12VDC, or 24VDC

RMH

HAZARDOUS LOCATION

Class I, Division 2, Groups A, B, C, D, Zone 2,
Groups IIA, IIB, IIC
AC, AC/DC & Self-Powered

The RMH series of Class I, Division II / Zone 2 rated running man are designed to perform in demanding hazardous applications. The unit maintains its sealed interior with a continuous integral gasket. As well LED pilot light and test switch are sealed type.

FEATURES AND SPECIFICATIONS

- **Electrical - AC/DC**
 - LED ultra bright light source
 - 120/347 VAC Input, field selectable
 - 3.6 W power consumption
 - Emergency DC wattages as follows:
6 VDC = 1.8 W, 12 VDC = 1.8 W, 24 VDC = 1.8 W
- **Electrical - Self-powered**
 - LED ultra bright light source
 - 120/347 VAC Input, field selectable
 - 4 W power consumption
 - High-performance, sealed Ni-Cad battery
 - 90 minutes emergency duration (standard)
 - Solid state transfer and battery charger
- **Mechanical**
 - Heavy-duty non-metallic, reinforced construction
 - One piece, molded and gasketed lens
 - Bottom hinged cover secured with two screws
 - One-way breather valve for release of gases and/or moisture condensation
 - All external metal hardware is stainless steel
 - Single face, wall mount only
 - Grey finish housing, white faceplate standard
- **Approvals**
 - CSA Certified to C22.2 #137
 - CSA Certified to C22.2 #141-15
 - CSA Certified to C860-11
 - Class I, Division 2, Groups A, B, C, D
 - Class I, Zone 2, Groups IIA, IIB, IIC
- **Compliance**
 - Meets requirements of ICES-005



(self powered version)

OVERVIEW

Light source	LED
Input voltage (VAC)	120/347
Input power	3.6 W AC/DC 4 W self-powered
DC Voltage (VDC)	6, 12, 24
DC power (W)	1.8



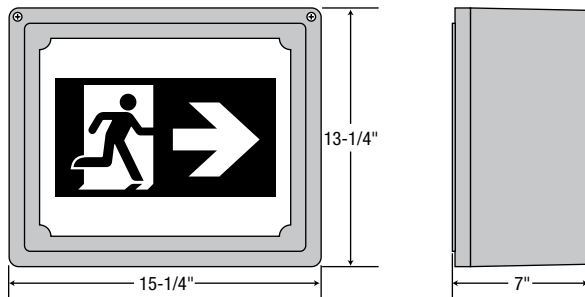
ORDERING GUIDE

RMH	1	GY		
Series	Nbr of faces	Color	DC Volts (VDC)	Options
RMH	1 - Single face	GY - Grey	UDC - Universal DC backup voltage from 6 to 24 IB - Self-powered for 90 minutes	 D U UR DR DL UL

TEMPERATURE CODES

	25°C	40°C
UDC	T6	T6
IB	T6	T5

DIMENSIONS



CONFIGURATION



Comes standard (single face) with three pictogram legends for direction selection.

PRMY

HAZARDOUS LOCATION RUNNING MAN COMBO

Class I, Division 1, Groups C & D, Zone 1 & 2, Groups IIA & IIB 6 VDC, 12 VDC or 24 VDC Models 120 or 347 VAC Input

Designed to meet the strictest codes and standards, the PRMY series of hazardous location combination running man signs and battery units provides safe and dependable operation. The PRMY series housings are built with die cast, copper free aluminum, in Class I and Division 1 rated models. Available in 6, 12 or 24 VDC models in a range of capacities from 36 to 320 W, for 30 minutes duration.

FEATURES AND SPECIFICATIONS

• Circuitry - AC

- LED ultra bright light source
- Range of input voltages is 120 or 347 VAC field selectable
- 6 VDC, 12 VDC or 24 VDC emergency power output versions (as specified)
- Wattage capacities from 36 to 320 watts
- Power consumption for LED sign of 4.8 W
- Optional external momentary push button test switch
- Diagnostic/pilot LED for AC ON
- Fully automatic, current limited charger
- Brownout and short circuit protection
- Temperature compensated
- Large magnum terminal screw type connectors for remote load connection
- Maintenance free, sealed lead acid battery

• Mechanical

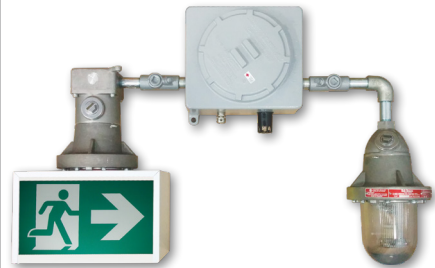
- Die cast, copper free aluminum housing - grey finish
- Solid state design and construction
- Housing cavity accessed via large circular screw on/off cover plate
- Standard stainless steel one-way breather valve for release of gases and/or moisture condensation
- Housing c/w tapped and plugged rigid holes
- Oversized integral mounting holes/forks accept heavy-duty mounting hardware
- Steel running man sign, white powder coat finish standard
- Temperature code: T6

• Approvals

- CSA Certified to C22.2 #137
- CSA Certified to C22.2 #141-15
- CSA Certified to C860-11
- Class I, Division 1, Groups C & D
- Class I, Zone 1 & 2, Groups IIA & IIB

• Compliance

- Meets requirements of ICES-005



OVERVIEW

Light source	LED
Input voltage (VAC)	120 or 347
Sign Power consumption (W)	4.8
Sign DC consumption (W)	3.4
DC voltage (VDC)	6, 12, or 24
Output power (W)	36 - 320



LED
fixture



hazardous
location



ICES
005



Energy Verified
Energie Vérifiée

ORDERING GUIDE

PRMY				1	1	CD	—	1R		/	
Series	Volts (V)	Watts (W)	Nbr of faces	Class	Div.	Group	Head	Lamp/Head	Lamp	Options	
PRMY	06 - 6 12 - 12 24 - 24	See model rating below	1 - Single face 2 - Double face	1	1	C D	1R - Single head	1L - Single lamp assembly 2L - Double lamp assembly	See lamp selection below	0 - No indicators (double face only) ↓ ↑ ↗ ↘ ↙ ↘ D U UR DR DL UL	

LAMP SELECTION

MR16	6V	12V	24V
LED	4WLR, 5WLA	4WLR, 5WLA, 6WLA, 7WLA	4WLR, 5WLA, 6WLA, 7WLA

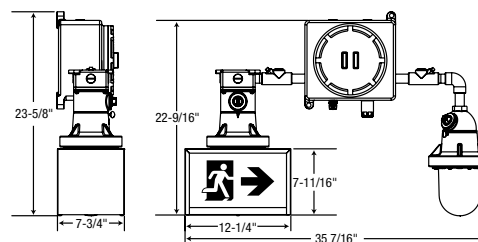
MODEL RATINGS

Model	Volts (V)	Wattage capacities (W)				Housing dimensions (in.)
		30 min.	60 min.	90 min.	120 min.	
PRMY06036	6	36	18	12	9	A : 10.63 x 9.25 x 6.75
PRMY06050	6	50	25	16	12	A : 10.63 x 9.25 x 6.75
PRMY06072	6	72	36	24	18	A : 10.63 x 9.25 x 6.75
PRMY12036	12	36	18	12	9	A : 10.63 x 9.25 x 6.75
PRMY12050	12	50	25	16	12	A : 10.63 x 9.25 x 6.75
PRMY12072	12	72	36	24	18	A : 10.63 x 9.25 x 6.75
PRMY12100	12	100	50	33	25	B : 12.44 x 12.44 x 8.44
PRMY12160	12	160	80	55	40	B : 12.44 x 12.44 x 8.44
PRMY12200	12	200	100	75	50	B : 12.44 x 12.44 x 8.44
PRMY24144	24	144	72	48	36	B : 12.44 x 12.44 x 8.44
PRMY24320	24	320	160	106	80	B : 12.44 x 12.44 x 8.44

SPACING GUIDE

Mounting height	Spacing center to center (ft)			
	4WLR	5WLA	6WLA	7WLA
8 ft	76	81	94	108
10 ft	79	79	93	106
15 ft	66	62	82	96
20 ft	53	49	73	87

DIMENSIONS



HOUSING DIMENSIONS
 A - 10.63" x 9.25" x 6.75"
 B - 12.44" x 12.44" x 8.44"

CONFIGURATION



Comes standard (single face) with three pictogram legends for direction selection.

SPEXY-SPSRY

HAZARDOUS LOCATION COMBO EXIT/SORTIE

Class I, Division 1, Groups C & D, Zone 1 & 2, Groups IIA & IIB

Designed to meet the strictest codes and standards, the SPEXY-SPSRY series of hazardous location combination Exit/Sortie signs and battery units provides safe and dependable operation. The SPEXY-SPSRY series housings are built with die cast, copper free aluminum, in Class I and Division 1 rated models. Available in 6VDC, 12VDC or 24VDC models in a range of capacities from 36 to 320 watts, for 30 minutes duration.

FEATURES AND SPECIFICATIONS

• Circuitry - AC

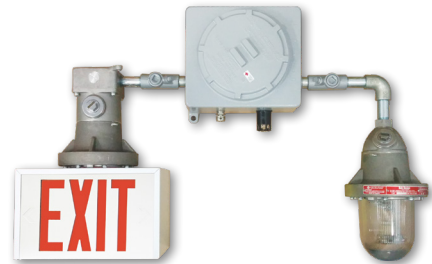
- LED ultra bright light source
- Range of input voltages is 120 or 347VAC field selectable
- 6VDC, 12VDC or 24VDC emergency power output versions (as specified)
- Wattage capacities from 36 to 320 watts
- Power consumption for LED sign of 3.6W
- Optional external momentary push button test switch
- Diagnostic/pilot LED for AC ON
- Fully automatic, current limited charger
- Brownout and short circuit protection
- Temperature compensated
- Large magnum terminal screw type connectors for remote load connection
- Maintenance free, sealed lead acid battery

• Mechanical

- Die cast, copper free aluminum housing - grey finish
- Solid state design and construction
- Housing cavity accessed via large circular screw on/off cover plate
- Standard stainless steel one-way breather valve for release of gases and/or moisture condensation
- Housing c/w tapped and plugged rigid holes
- Oversized integral mounting holes/forks accept heavy-duty mounting hardware
- Steel Exit/Sortie sign, white powder coat finish standard
- Universal faces
- Temperature code: T6

• Approvals

- CSA Certified to C22.2 #137
- CSA Certified to C22.2 #141-15
- CSA Certified to C860-11
- Class I, Division 1, Groups C & D
- Class I, Zone 1 & 2, Groups IIA & IIB



OVERVIEW

Light source	LED
Input voltage	120 or 347VAC
Output voltage	6VDC, 12VDC or 24VDC
Output power	36W - 320W
LED sign power consumption	3.6W



LED
fixture



hazardous
location



ORDERING GUIDE

				1	1	CD	—	1R		
Series	Voltage	Wattage	Nbr of faces	Class	Div.	Group	Head	Head/Lamp	Lamp	
SPEXY - Exit SPSRY - Sortie	06 - 6VDC 12 - 12VDC 24 - 24VDC	See model rating below	1 - Single face 2 - Double face	1	1	C D	1R - Single head	1L - Single lamp assembly 2L - Double lamp assembly	See lamp selection chart below	

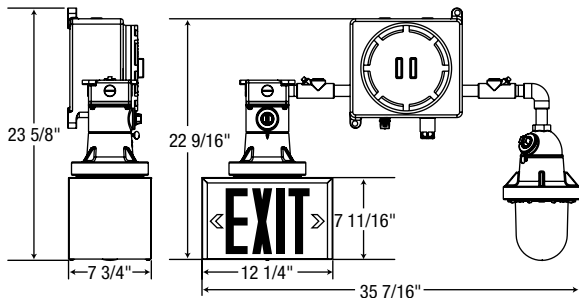
LAMP SELECTION

	6 volts	12 volts	24 volts
	MR16		
LED	4WLR, 5WLA	4WLR, 5WLA, 6WLA, 7WLA	4WLR, 5WLA, 6WLA, 7WLA

MODEL RATINGS AND DIMENSIONS

Wattage capacities						
Model	Voltage	30 min.	60 min.	90 min.	Housing dimensions	
SPEXY06036	SPSRY06036	06VDC	36	18	12	A: 10.63" x 9.25" x 6.75"
SPEXY06050	SPSRY06050	06VDC	50	25	16	A: 10.63" x 9.25" x 6.75"
SPEXY06072	SPSRY06072	06VDC	72	36	24	A: 10.63" x 9.25" x 6.75"
SPEXY12036	SPSRY12036	12VDC	36	18	12	A: 10.63" x 9.25" x 6.75"
SPEXY12050	SPSRY12050	12VDC	50	25	16	A: 10.63" x 9.25" x 6.75"
SPEXY12072	SPSRY12072	12VDC	72	36	24	A: 10.63" x 9.25" x 6.75"
SPEXY12100	SPSRY12100	12VDC	100	50	33	B: 12.44" x 12.44" x 8.44"
SPEXY12160	SPSRY12160	12VDC	160	80	55	B: 12.44" x 12.44" x 8.44"
SPEXY12200	SPSRY12200	12VDC	200	100	75	B: 12.44" x 12.44" x 8.44"
SPEXY24144	SPSRY24144	24VDC	144	72	48	B: 12.44" x 12.44" x 8.44"
SPEXY24320	SPSRY24320	24VDC	320	160	106	B: 12.44" x 12.44" x 8.44"

DIMENSIONS



HOUSING DIMENSIONS

A - 10.63" x 9.25" x 6.75"
B - 12.44" x 12.44" x 8.44"

PRMH

HAZARDOUS LOCATION COMBO

Class I, Division 2, Groups A, B, C, D, Zone 2,
Groups IIA, IIB, IIC
12 VDC, 36-200 W

The PRMH series of Class I, Division II/Zone 2 rated running man combos is designed to perform in demanding hazardous applications. The unit maintains its sealed interior with a continuous integral gasket. As well LED pilot light and test switch are sealed type. The breather, pilot light and test switch have all been mounted into the bottom of the enclosure to allow for quick and simple visual inspection and maintenance testing from below.

FEATURES AND SPECIFICATIONS

• Circuitry

- LED ultra bright light source
- 120/347 VAC Input, field selectable
- 12 VDC emergency voltage output
- Wattage capacities from 36 to 200 watts
- 30 minutes emergency power duration standard
- Sealed momentary push button test switch
- Diagnostic/pilot LED for AC ON
- Fully automatic, current limited charger
- Solid state design and construction with brownout and short circuit protection
- Temperature compensated
- Large terminal strip connector all electrical connections - AC and DC
- Maintenance free, sealed lead acid battery

• Mechanical

- Heavy-duty non-metallic, reinforced construction
- One piece, molded and gasketed lens
- Bottom hinged cover secured with two screws
- One-way breather valve for release of gases and/or moisture condensation
- All external metal hardware is stainless steel
- Single face, wall mount only
- Grey finish housing, white faceplate standard

• Approvals

- CSA Certified to C22.2 #137
- CSA Certified to C22.2 #141-15
- CSA Certified to C860-11
- Class I, Division 2, Groups A, B, C, D
- Class I, Zone 2, Groups IIA, IIB, IIC

• Compliance

- Meets requirements of ICES-005



BOTTOM VIEW

- 1- AC ON PILOT LED
- 2- BREATHER VALVE
- 3- TEST SWITCH

OVERVIEW

Light source	LED
Input voltage (VAC)	120/347
Sign Power consumption (W)	3.6
Sign DC consumption (W)	1.8
Output voltage (VDC)	12
Output power (W)	36 - 200



LED
fixture



hazardous
location




ICES
005



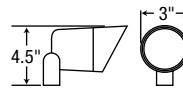
Energy Verified
Energie Vérifiée

ORDERING GUIDE

PRMH	1				GY	/
Series	Nbr of faces	Wattage	Head/Lamp	Lamp	Colour	Options
PRMH	1 - Single face	See model rating below	0 - No heads 1D - One MR16 Weather-Proof 2D - Two MR16 Weather-Proof	See lamp selection chart below	GY - Grey	

LAMP SELECTION

MR16 • Small head c/w MR16 Lamp	12 V
Quartz Halogen	12Q, 20Q
LED	4WLR, 5WLA, 6WLA, 7WLA



TYPE D - MR16

Die cast
20W max.

SPACING GUIDE

Mounting height	Spacing center to center (ft)			
	4WLR	5WLA	6WLA	7WLA
8 ft	76	81	94	108
10 ft	79	79	93	106
15 ft	66	62	82	96
20 ft	53	49	73	87

CONFIGURATION

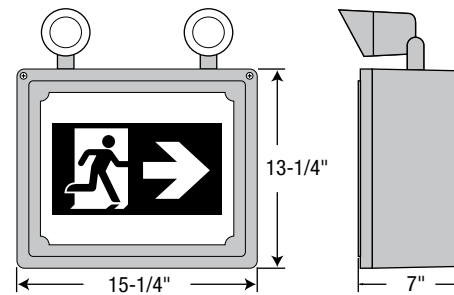


Comes standard (single face) with three pictogram legends for direction selection.

TEMPERATURE CODES

Head/Lamp	Temperature code (25°C)	Temperature code (40°C)
00	T5	T4A
D4L	T5	T4A
D5L	T3C	T3B
D6L	T4	T3C
D7L	T4	T3C
D8Q	T4	T3C
D10Q	T3C	T3B
D12Q	T3C	T3B
D20Q	T2D	T2C

DIMENSIONS



MODEL RATINGS

Model	Volts (V)	Wattage capacities (W)			
		30 min.	60 min.	90 min.	120 min.
PRMH_1036	12	36	18	12	9
PRMH_1050	12	50	25	16	12
PRMH_1072	12	72	36	24	18
PRMH_1100	12	100	50	33	25
PRMH_1160	12	160	80	53	40
PRMH_1200	12	200	100	66	50

SPEXH

HAZARDOUS LOCATION EXIT

Class I, Division 2, Groups A, B, C, D, Zone 2,
Groups IIA, IIB, IIC
12 VDC, 36 - 200 Watts

The SPEXH series of Class I, Division II/Zone 2 rated exit combos is designed to perform in demanding hazardous applications. The unit maintains its sealed interior with a continuous integral gasket. As well LED pilot light and test switch are sealed type. The breather, pilot light and test switch have all been mounted into the bottom of the enclosure to allow for quick and simple visual inspection and maintenance testing from below.

FEATURES AND SPECIFICATIONS

• Circuitry

- LED ultra bright light source
- 120/347 VAC Input, field selectable
- 12VDC emergency power output
- Wattage capacities from 36 to 200 watts
- 30 minutes emergency power duration standard
- Sealed momentary push button test switch
- Diagnostic/pilot LED for AC ON
- Fully automatic, current limited charger
- Solid state design and construction with brownout and short circuit protection
- Temperature compensated
- Large terminal strip connector all electrical connections - AC and DC
- Maintenance free, sealed lead acid battery

• Mechanical

- Heavy-duty non-metallic, reinforced construction
- One piece, molded and gasketed lens
- Removable directional chevrons/arrows
- Bottom hinged cover secured with two screws
- One-way breather valve for release of gases and/or moisture condensation
- All external metal hardware is stainless steel
- Single face, wall mount only
- Grey finish housing, white faceplate standard

• Approvals

- CSA Certified to C22.2 #137
- CSA Certified to C22.2 #141-15
- CSA Certified to C860-11
- Class I, Division 2, Groups A, B, C, D
- Class I, Zone 2, Groups IIA, IIB, IIC



BOTTOM VIEW

- 1- AC ON PILOT LED
- 2- BREATHER VALVE
- 3- TEST SWITCH

OVERVIEW

Light source	LED
Input voltage	120/347 V AC
Output voltage	12 VDC
Output power	36W - 200 W



LED
fixture



hazardous
location

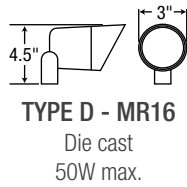


ORDERING GUIDE

SPEXH	1		1		
Series	Voltage	Wattage	Face	Head/Lamp	Lamp
SPEXH	1 - 12 VDC	See model rating below	1 - Single face	00 - No heads 1D - One MR16 Weather-Proof 2D - Two MR16 Weather-Proof	See lamp selection chart below

LAMP SELECTION

12 Volts	
MR16 - Small head c/w MR16 Lamp	
Quartz Halogen	12Q, 20Q
LED	4WLR, 5WLA, 6WLA, 7WLA



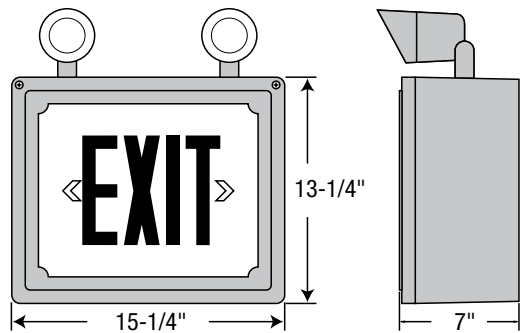
TEMPERATURE CODES

Head/Lamp	Temperature code (25°C)	Temperature code (40°C)
00	T5	T4A
D4L	T5	T4A
D5L	T3C	T3B
D6L	T4	T3C
D7L	T4	T3C
D8Q	T4	T3C
D10Q	T3C	T3B
D12Q	T3C	T3B
D20Q	T2D	T2C

MODEL RATINGS

Wattage capacities				
Model	Voltage	30 min.	60 min.	90 min.
SPEXH10361	12 VDC	36	18	12
SPEXH10501	12 VDC	50	25	16
SPEXH10721	12 VDC	72	36	24
SPEXH11001	12 VDC	100	50	33
SPEXH11601	12 VDC	160	80	53
SPEXH12001	12 VDC	200	100	66

DIMENSIONS



SLEXH

HAZARDOUS LOCATION EXIT

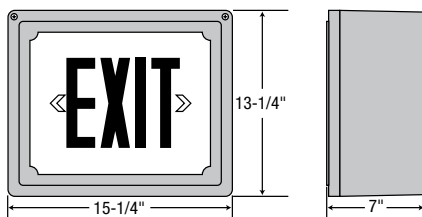
Class I, Division 2, Groups A, B, C, D, Zone 2,
Groups IIA, IIB, IIC
AC/DC & Self-Powered

The SLEXH series of Class I, Division II/Zone 2 rated exits is designed to perform in demanding hazardous applications. The unit maintains its sealed interior with a continuous integral gasket. As well any LED pilot light or test switch are sealed type.

FEATURES AND SPECIFICATIONS

- **Electrical - AC/DC**
 - LED ultra bright light source
 - 120/347VAC Input, field selectable
 - 2.8W power consumption single face
 - Emergency DC wattages as follows:
6VDC = 1.9W 12VDC = 2.9W 24VDC = 7W
- **Electrical - Self-powered**
 - LED ultra bright light source
 - 120/347VAC Input, field selectable
 - 9.5W power consumption Single face
 - High-performance, sealed Ni-Cad battery
 - 90 minutes emergency duration (standard)
 - Solid state transfer and battery charger
- **Mechanical**
 - Heavy-duty non-metallic, reinforced construction
 - One piece, molded and gasketed lens
 - Removable directional chevrons/arrows
 - Bottom hinged cover secured with two screws
 - One-way breather valve for release of gases and/or moisture condensation
 - All external metal hardware is stainless steel and steel screws
 - Single face, wall mount only
 - Grey finish housing, white faceplate standard
- **Approvals**
 - CSA Certified to C22.2 #137
 - CSA Certified to C22.2 #141-15
 - CSA Certified to C860-11
 - Class I, Division 2, Groups A, B, C, D
 - Class I, Zone 2, Groups IIA, IIB, IIC

DIMENSIONS



ORDERING GUIDE

SLEXH	1	GY	—
Series	Nbr of faces	Colour	Operation
SLEXH	1 - Single face	GY - Grey	UDC - Universal DC backup voltage from 6 to 24VDC IB - Self-powered for 90 minutes

TEMPERATURE CODES

	25°C	40°C
UDC	T6	T6
IB	T6	T5



(self powered version)



hazardous location

OVERVIEW

Light source	LED
Input voltage	120/347V AC
Input power	2.8W AC/DC single face 9.5W self-powered single face
DC voltage & power	6V DC = 1.9W 12V DC = 2.9W 24V DC = 7W

SLBXP

HAZARDOUS LOCATION BATTERY UNIT

Class I, Division 1, Groups C & D, Zone 1 & 2, Groups IIA & IIB
6, 12 or 24 VDC Models
120/347 VAC Input

Designed to meet the strictest codes and standards, the SLBXP series of hazardous location battery units provides safe and dependable operation. The SLBXP series housings are built with die cast, copper free aluminum, in a variety of Class and Division rated models. Available in 6 VDC, 12 VDC and 24 VDC models in a range of capacities from 36 W to 320 W, for 30 minutes duration.

FEATURES AND SPECIFICATIONS

• Circuitry

- Range of input voltages 120 or 347 VAC
- Single or double internal MR16 lamp assemblies
- 6 VDC, 12 VDC or 24 VDC emergency power output versions (as specified)
- Wattage capacities from 36 W to 320 W
- 30 minutes emergency power duration standard
- Diagnostic/pilot LED for AC ON
- High efficiency, rapid recovery, precision control charging system
- Brownout and short circuit protection
- Temperature compensated
- Large magnum terminal screw type connectors for remote load connection
- Maintenance free, sealed lead acid battery

• Mechanical

- Die cast, copper free aluminum housing - grey aluminum finish
- Housing cavity accessed via large circular screw on/off cover plate
- Standard stainless steel one-way breather valve for release of gases and/or moisture condensation
- Housing c/w tapped and plugged rigid holes
- Solid state design and construction
- Oversized integral mounting holes/forks accept heavy-duty mounting hardware
- Internal MR16 lamp assembly is fully adjustable
- Temperature code: T6

• Approvals

- CSA Certified to C22.2 #137
- CSA Certified to C22.2 #141-15
- Class I, Division 1, Groups C & D
- Class I, Zone 1 & 2, Groups IIA & IIB

• Compliance

- Meets requirements of ICES-005



OVERVIEW

Input voltage (VAC)	120, 347
DC voltage (VDC)	6, 12, 24
Output power (W)	36 - 320



hazardous
location



ICES
005



ORDERING GUIDE

SLBXP			1	1	CD		—		
Series	Volts (V)	Watts	Class	Div.	Group	Input voltage (V)	Head	Lamp/Head	Lamp
SLBXP	6 - 6 1 - 12 2 - 24	See model rating below	1	1	C D	Blank - 120/347	1R - Single 2R - Double	1L - Single lamp assembly 2L - Double lamp assembly	See lamp selection below

LAMP SELECTION

MR16	6 V	12 V	24 V
LED	4WLR, 5WLA	4WLR, 5WLA, 6WLA, 7WLA	4WLR, 5WLA, 6WLA, 7WLA

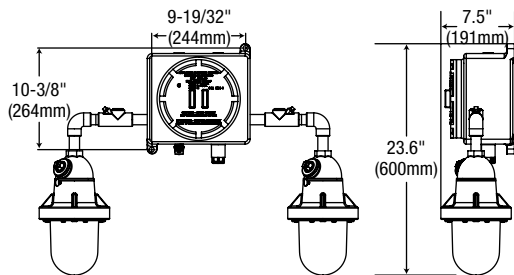
MODEL RATINGS

Model	Housing	Volts (V)	Wattage capacities (W)			
			30 min.	60 min.	90 min.	120 min.
SLBXP6036	A	6	36	18	12	9
SLBXP6050	A		50	25	16	12
SLBXP6072	A		72	36	24	18
SLBXP1036	A	12	36	18	12	9
SLBXP1050	A		50	25	16	12
SLBXP1072	A		72	36	24	18
SLBXP1100	A		100	50	33	25
SLBXP1160	B		160	80	53	40
SLBXP1200	B		200	100	66	50
SLBXP2144	A	24	144	72	48	36
SLBXP2320	B		320	160	106	80

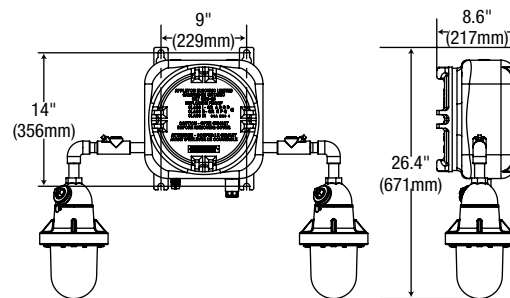
DIMENSIONS

Dimensions are subject to change according to exact Class, Division & Group specifications.

ENCLOSURE A



ENCLOSURE B



SPACING GUIDE

Mounting height	Spacing center to center (ft)			
	4WLR	5WLA	6WLA	7WLA
8 ft	76	81	94	108
10 ft	79	79	93	106
15 ft	66	62	82	96
20 ft	53	49	73	87

SLBXP11

HAZARDOUS LOCATION BATTERY UNIT

Class I, Division 2, Groups A, B, C, D, Zone 2,
Groups IIA, IIB, IIC

The SLBXP11 series of Class I, Division II/Zone 2 rated battery units is designed to perform in demanding hazardous applications. The unit maintains its sealed interior with a continuous integral gasket. As well LED pilot light and test switch are sealed type.

FEATURES AND SPECIFICATIONS

- **Circuitry**
 - 120/347 VAC 60 Hz Input, field selectable
 - High efficiency, rapid recovery, precision control charging system
 - 12 VDC emergency voltage output
 - Wattage capacities from 36 W to 200 W
 - 30 minutes emergency power duration standard
 - Sealed momentary push button test switch
 - Diagnostic/pilot LED for AC ON
 - Fully automatic, current limited charger
 - Solid state design and construction with brownout and short circuit protection
 - Temperature compensated
 - Large terminal strip connector all electrical connections
 - Complete battery recharge in 24 hours
 - Maintenance free, sealed lead acid battery
- **Mechanical**
 - Heavy-duty non-metallic, reinforced construction
 - One piece, molded and gasketed lens
 - Bottom hinged cover, secured with two screws
 - One-way breather valve for release of gases and/or moisture condensation
 - All external metal hardware is stainless steel
 - Wall mount construction
 - Grey finish housing
 - Top head mounting is standard
- **Approvals**
 - CSA Certified to C22.2 #137
 - CSA Certified to C22.2 #141-15
 - Class I, Division 2, Groups A, B, C, D
 - Class I, Zone 2, Groups IIA, IIB, IIC
- **Compliance**
 - Meets requirements of ICES-005

OVERVIEW

Input voltage (VAC)	120/347
Output voltage (VDC)	12
Output power (W)	36 - 200



BOTTOM VIEW

- 1- AC ON Pilot LED
- 2- Breather Valve
- 3- Test Switch



hazardous
location



ICES
005



ORDERING GUIDE

SLBXP11	1			
Series	Volts (V)	Watts	Head/Lamp	Lamp
SLBXP11	1 - 12	See model rating below	00 - No heads 1D - One MR16 Weather-Proof 2D - Two MR16 Weather-Proof	See lamp selection chart below

LAMP SELECTION

MR16 • Small head c/w MR16 or LED lamp	12 V
LED	4WLR, 5WLA, 6WLA, 7WLA
Quartz halogen	12Q, 20Q

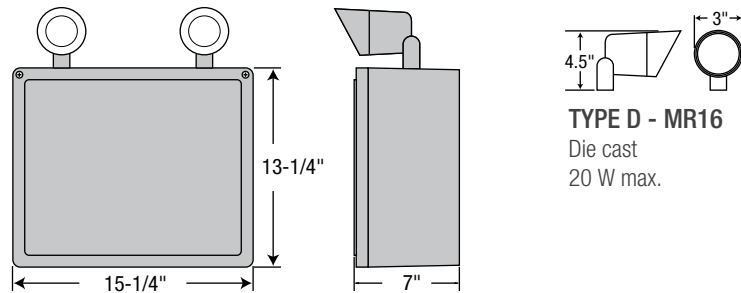
MODEL RATINGS

Model	Volts (V)	Wattage capacities (W)			
		30 min.	60 min.	90 min.	120 min.
SLBXP11036	12	36	18	12	9
SLBXP11050		50	25	16.5	12
SLBXP11072		72	36	24	18
SLBXP11100		100	50	33	25
SLBXP11160		160	80	53	40
SLBXP11200		200	100	66	50

TEMPERATURE CODES

Head/Lamp	Temperature code (25°C)	Temperature code (40°C)
00	T5	T4A
D4L	T5	T4A
D5L	T3C	T3B
D6L	T4	T3C
D7L	T4	T3C
D12Q	T3C	T3B
D20Q	T2D	T2C

DIMENSIONS



SPACING GUIDE

Mounting height	Spacing center to center (ft)						
	3WLJ	4WLJ	5WLJ	4WLR	5WLA	6WLA	7WLA
8 ft	78	83	118	76	81	94	108
10 ft	75	76	118	79	79	93	106
15 ft	66	68	104	66	62	82	96
20 ft	53	53	91	53	49	73	87



SLRXP

HAZARDOUS LOCATION REMOTE FIXTURE

Class I, Division 1, Groups C & D, Zone 1 & 2, Groups IIA & IIB
6, 12 or 24 VDC Models
Wall, Ceiling or Pendant Mount

Designed to meet the strictest Codes, the SLRXP series of hazardous location remote fixtures provides safe and dependable operation. The SLRXP series housings are built with die cast, copper free aluminum, in a variety of Class and Division rated models. Available as 6 V, 12 V or 24 V models with wall, ceiling or pendant mounted configuration.

FEATURES AND SPECIFICATIONS

- **Circuitry - AC & AC/DC**
 - Single or double internal MR16 lamp assemblies
 - Quartz-halogen or LED lamps
- **Mechanical**
 - Die cast, copper free aluminum, grey finish
 - Heavy-duty Pyrex glass lens
 - Internal MR16 lamp assembly is fully adjustable
 - Wall, ceiling or pendant mounting (as specified)
 - Wiring pre-pulled through fixture
 - Wall and ceiling models c/w integrated die cast junction box
 - Junction box c/w oversized integral mounting holes and tapped and plugged rigid holes
 - Temperature code: T6
- **Approvals**
 - CSA Certified to C22.2 #137
 - CSA Certified to C22.2 #141-15
 - Class I, Division 1, Groups C & D
 - Class I, Zone 1 & 2, Groups IIA & IIB
- **Compliance**
 - Meets requirements of ICES-005



OVERVIEW

Light source	Quartz, LED
DC voltage (VDC)	6, 12, 24



ORDERING GUIDE - LED

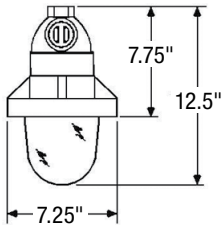
Series	Head	Nbr of lamps	DC Volts (VDC operational)	Watts (W)	Lamp type	Mounting	Class, Div., Group	Options
SLRXP	1 - Single 2 - Double (with J-Box)	1 - Single lamp per head 2 - Double lamp per head	06-24V - 6 to 24 12-24V - 12 to 54	4W - 4 5W - 5 6W - 6 7W - 7	LR - LED LA - LED LA - LED	CM - Ceiling mount PM - Pendant mount WM - Wall mount	Class 1 Division 1 Groupe C & D	LGD - Die cast lens guard

SPACING GUIDE

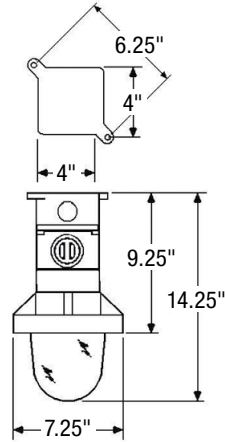
Mounting height	Spacing center to center (ft)			
	4WLR	5WLA	6WLA	7WLA
8 ft	76	81	94	108
10 ft	79	79	93	106
15 ft	66	62	82	96
20 ft	53	49	73	87

DIMENSIONS

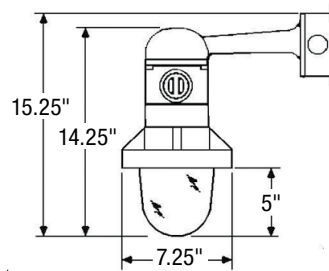
PENDANT MOUNT



CEILING MOUNT



WALL MOUNT





VC

HAZARDOUS LOCATION REMOTE FIXTURE

Class I, Division 2, Groups A, B, C, D, Zone 2, IIA, IIB, IIC
6, 12 or 24 VDC models

Wall, ceiling or pendant mount

Designed to meet the strictest Codes, the VC series of hazardous location remote fixtures provides safe and dependable operation. The VC series housings are built with die cast, copper free aluminum, in a variety of Class and Division rated models. Available as 6 V, 12 V or 24 V models with wall, ceiling or pendant mounted configuration.

FEATURES AND SPECIFICATIONS

- **Circuitry**
 - Single or double internal MR16 lamp assemblies
 - Quartz-halogen bi-pin or LED lamps
- **Mechanical**
 - Die cast, copper free aluminum, grey finish
 - Heavy-duty Pyrex glass lens
 - Internal MR16 lamp assembly is fully adjustable
 - Wall, ceiling or pendant mounting (as specified)
 - Wiring pre-pulled through fixture
 - Wall and ceiling models c/w integrated die cast junction box
 - Junction box c/w oversized integral mounting holes and tapped and plugged rigid holes
- **Approvals**
 - CSA Certified to C22.2 #137
 - CSA Certified to C22.2 #141-15
 - Class I, Division 2, Groups A, B, C, D
 - Class I, Zone 2, IIA, IIB, IIC
- **Compliance**
 - Meets requirements of ICES-005

OVERVIEW

Light source	LED
Input Voltage (VDC)	6, 12, 24



ORDERING GUIDE - LED

Series	Head	Nbr of lamps	DC Volts (VDC operational)	Watts (W)	Lamp type	Mounting	Options
VC	1 - Single 2 - Double (with J-Box)	1 - Single lamp per head 2 - Double lamp per head	06-24V - 6 to 24	4W - 4	LR - LED	CM - Ceiling mount PM - Pendant mount WM - Wall mount	LGD - Die cast lens guard
			12-24V - 12 to 24	5W - 5	LA - LED		
				6W - 6	LA - LED		
				7W - 7			

TEMPERATURE CODE

Head/Lamp	Temperature code (25°C)	Temperature code (40°C)
4WLR	T3A	T3
5WLA	T3A	T3
6WLA	T3A	T3
7WLA	T3C	T3A

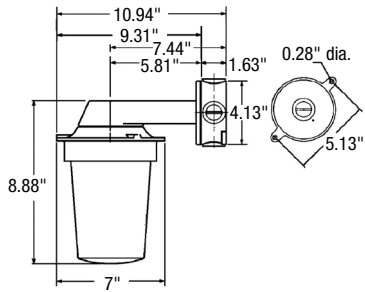
SPACING GUIDE

Mounting height	Spacing center to center (ft)			
	4WLR	5WLA	6WLA	7WLA
8 ft	76	81	94	108
10 ft	79	79	93	106
15 ft	66	62	82	96
20 ft	53	49	73	87

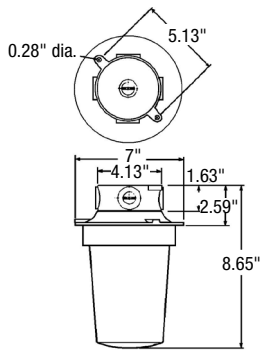
DIMENSIONS

SINGLE HEAD

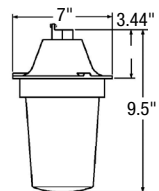
WALL MOUNT



CEILING MOUNT

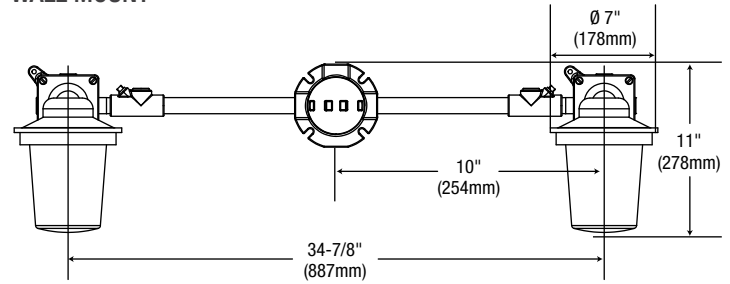


PENDANT MOUNT

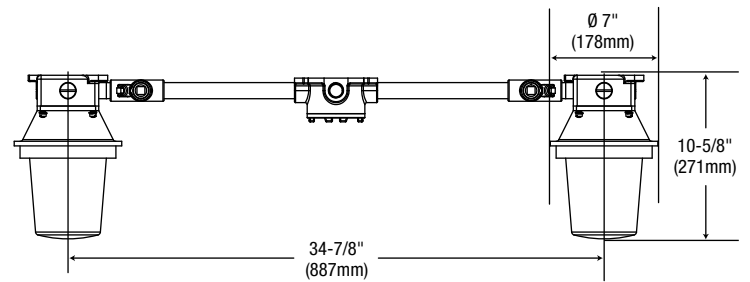
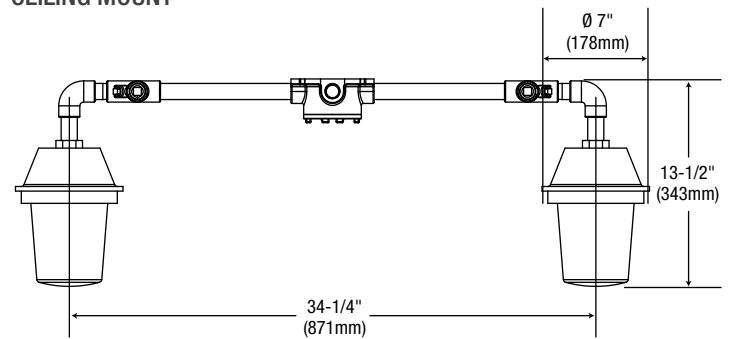


DOUBLE HEAD

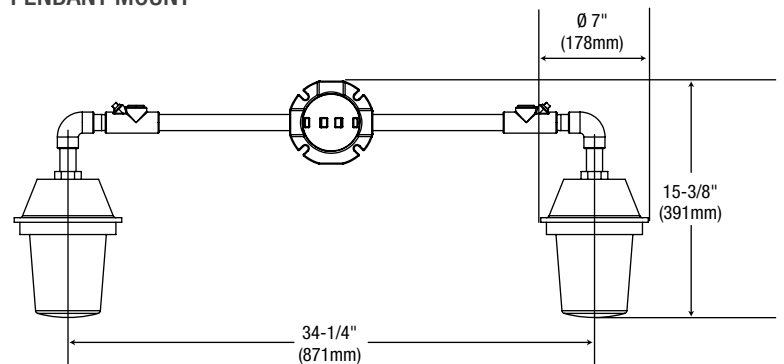
WALL MOUNT



CEILING MOUNT



PENDANT MOUNT





Printed in Canada.

© 2021 STANDARD Products Inc. All Rights Reserved.

Data is based upon tests performed in a controlled environment.
Actual performance can vary depending on operating conditions.
All products are subject to change or may be discontinued any time without notice.

For the latest version, please refer to our website.

www.standardpro.com



STANPRO



standardpro.com

STANPRO