



ST_LED-LAMP_QS_EN_R27



www.standardpro.com



Printed in Canada. © 2020 STANDARD Products Inc. All Rights Reserved.
Subject to change without notice. For the latest version, please refer to our website.
Rev. November 11, 2021

STANDARD[®]

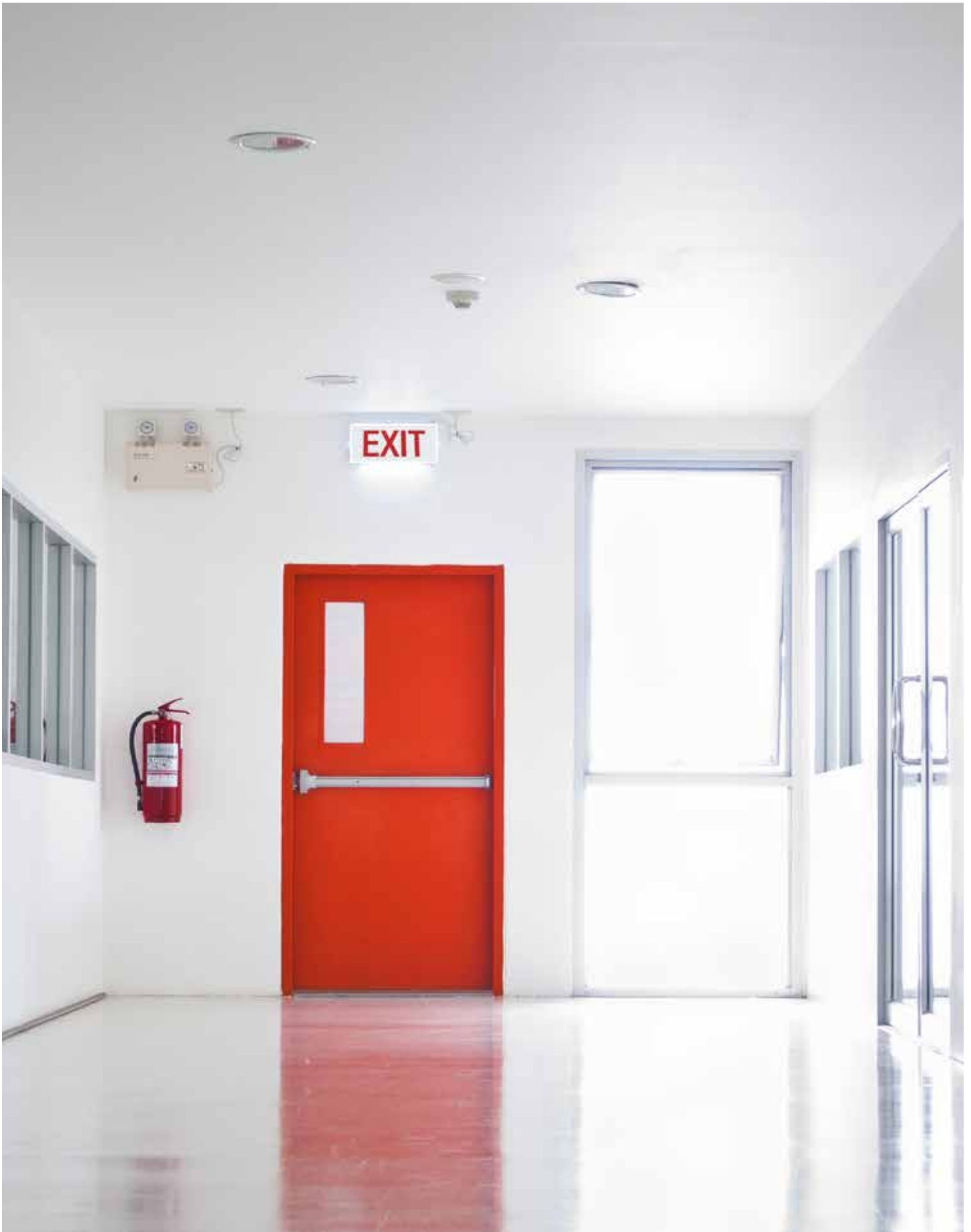


**LED
LAMPS
QUICK SHIP**



STANDARD[®]





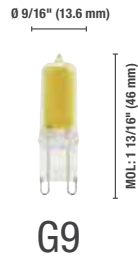
CONTENTS

4	DESIGN SERIES
6	FILAMENT
14	REFLECTOR
19	GENERAL PURPOSE
24	FLUORESCENT REPLACEMENT
29	CFL REPLACEMENT
32	HIGH INTENSITY
36	COLORED
38	STRING LIGHT AND LAMP
40	MINIATURE
46	EXIT LAMP



Design Series

STANDARD is proud to introduce its new DESIGN Series of LED lamps, focusing on providing LED lamps that offer good balance between great performance and aesthetic conception. These products mimic the look of the traditional lamps, while offering all of the benefits of LED technology.



Order code	Description	Watts (W)	Base	Volts (VAC)	Color temp. (K)	CRI	Life L70 (hrs)	Lumen output (lm)	Beam angle (°)	CBCP (cd)	Traditional equivalent (W)	Case qty (inner/master)
G9												
67096 ¹	G9/2.7W/30K/CL/DESIGN/STD	2.7	G9	120	3 000	80	15 000	320	360	-	35	100/1 000
67097 ¹	G9/2.7W/40K/CL/DESIGN/STD	2.7	G9	120	4 000	80	15 000	320	360	-	35	100/1 000
GU10												
67615 ²	GU10/7W/30K/45/DESIGN/STD	7	GU10	120	3 000	80	25 000	530	45	600	50	10/100
67616 ²	GU10/7W/40K/45/DESIGN/STD	7	GU10	120	4 000	80	25 000	530	45	600	50	10/100
PAR20												
67607	P20/7W/30K/45/DESIGN/STD	7	E26	120	2 700	80	25 000	500	45	520	50	10/60
67608	P20/7W/40K/45/DESIGN/STD	7	E26	120	3 000	80	25 000	500	45	520	50	10/60
PAR30SN												
67609	P30S/10W/30K/45/DESIGN/STD	10	E26	120	3 000	80	25 000	750	45	810	60	1/20
67610	P30S/10W/40K/45/DESIGN/STD	10	E26	120	4 000	80	25 000	750	45	810	60	1/20
PAR30LN												
67611	P30L/13W/30K/45/DESIGN/STD	13	E26	120	3 000	80	25 000	950	45	1 100	75	1/20
67612	P30L/13W/40K/45/DESIGN/STD	13	E26	120	4 000	80	25 000	950	45	1 150	75	1/20
PAR38												
67613	P38/15W/30K/45/DESIGN/STD	15	E26	120	3 000	80	25 000	1 200	45	1 150	100	1/10
67614	P38/15W/40K/45/DESIGN/STD	15	E26	120	4 000	80	25 000	1 200	45	1 500	100	1/10

Lumen values are derived from photometric testing
 For a complete list of compatible dimmers and ENERGY STAR qualified products, please visit
www.standardpro.com

6 damp location
2
dimmmable
1
dry location
6 wet location
3 yrs warranty
cUL us
ETL Intertek
ENERGY STAR

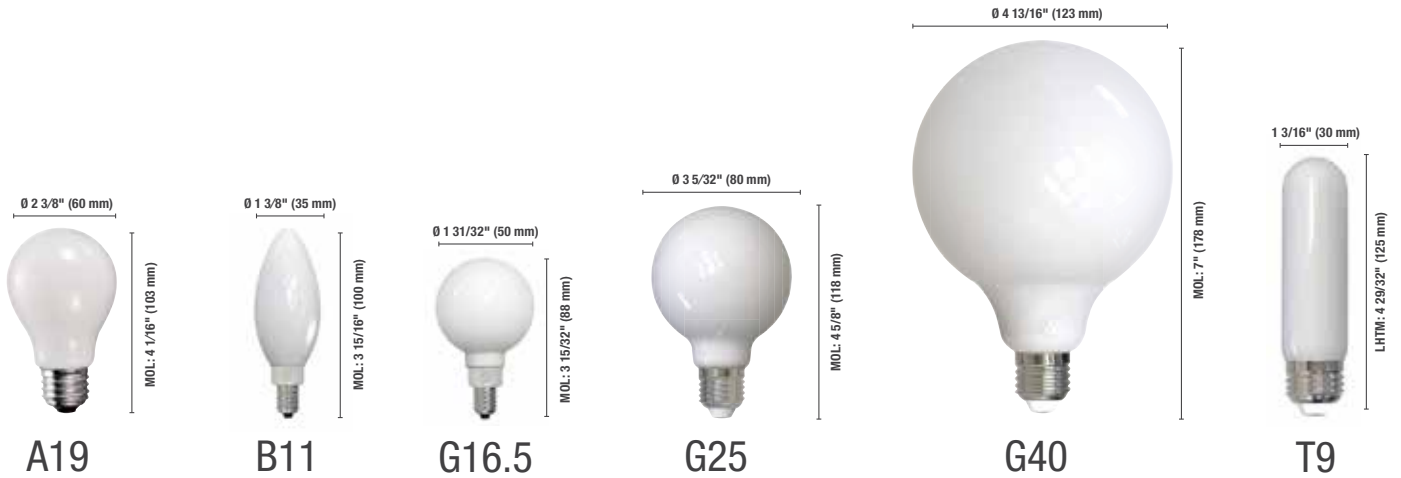
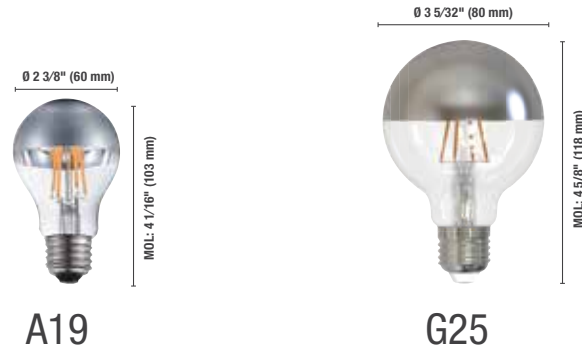


LED Filament

The LED filament lamps distinguish themselves by their sparkling white light, blending perfectly with crystal chandeliers and modern style fixtures.

The LED filament victorian style lamps, they have an amber coating which provides a warm light that resembles the ambiance created by incandescent lamps.

This line also includes a long life lamps series, which bring style to any decor while offering an exceptional long life of 25 000 hours.



Order code	Description	Filament type	Watts (W)	Base	Volts (VAC)	Color temp. (K)	CRI	Life L70 (hrs)	Lumen output (lm)	Traditional equivalent (W)	Case qty (inner/master)
------------	-------------	---------------	-----------	------	-------------	-----------------	-----	----------------	-------------------	----------------------------	-------------------------

Half Mirror

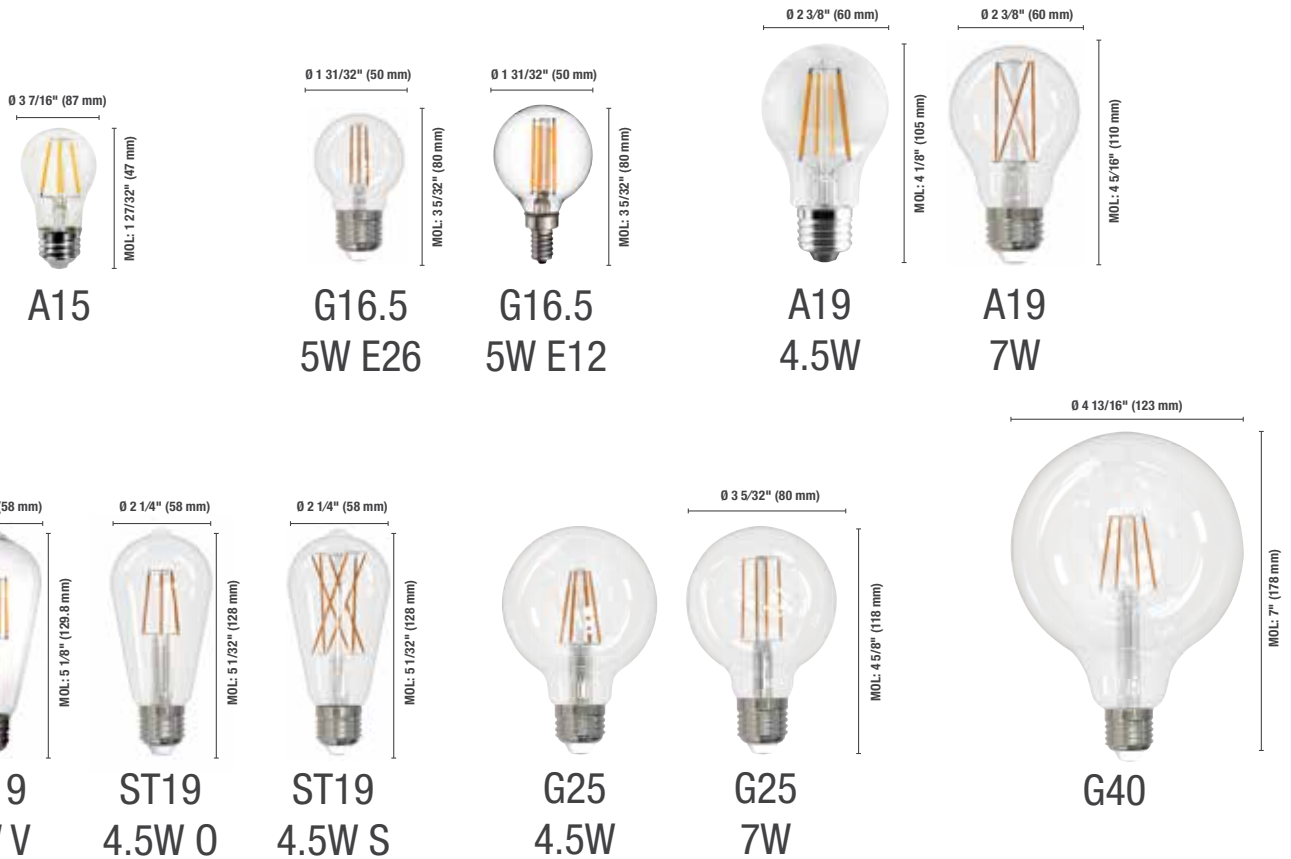
A19											
65821 ²	LED/A19/S2/4W/27K/HM/O/FIL/STD	Oblique	4	E26	120	2 700	80	15 000	360	40	10/50
G25											
67661 ²	G25/S3/4.5W/27K/HM/O/FIL/STD	Vertical	4.5	E26	120	2 700	80	15 000	380	40	10/40

Soft White

A19											
67780 ^{1 2}	A19/S3/8.5W/27K/SW/FIL/STD	N/A	8.5	E26	120	2 700	80	15 000	800	60	10/40
67781	A19/S3/8.5W/30K/SW/FIL/STD	N/A	8.5	E26	120	3 000	80	15 000	800	60	10/40
B11											
67759 ²	B11/S3/4W/27K/SW/E12/FIL/STD	N/A	4	E12	120	2 700	80	15 000	350	40	10/100
67760 ²	B11/S3/4W/30K/SW/E12/FIL/STD	N/A	4	E12	120	3 000	80	15 000	350	40	10/100
G16.5											
67763 ²	G16.5/S3/5W/27K/SW/E12/FIL/STD	N/A	5	E12	120	2 700	80	15 000	450	60	10/100
G25											
67662 ^{1 2}	G25/S3/4.5W/27K/SW/FIL/STD	N/A	4.5	E26	120	2 700	80	15 000	380	40	10/40
G40											
67667 ^{1 2}	G40/S3/8.5W/27K/SW/FIL/STD	N/A	8.5	E26	120	2 700	80	15 000	800	60	5/20
T9											
67783	T9/S3/5W/27K/SW/FIL/STD	N/A	5	E26	120	2 700	80	15 000	500	60	1/100

Lumen values are derived from photometric testing
For a complete list of compatible dimmers, please visit www.standardpro.com





Order code	Description	Filament type	Watts (W)	Base	Volts (VAC)	Color temp. (K)	CRI	Finish	Life L70 (hrs)	Lumen output (lm)	Traditional equivalent (W)	Case qty (inner/master)
A15												
67785	A15/S3/5W/27K/V/FIL/STD	Vertical	5	E26	120	2 700	80	Clear	15 000	450	40	10/100
A19												
67744	A19/S3/4.5W/27K/O/FIL/STD	Oblique	4.5	E26	120	2 700	80	Clear	15 000	45	40	10/40
67745	A19/S3/7W/27K/S/FIL/STD	Spiral	7	E26	120	2 700	80	Clear	15 000	800	60	1/40
67746	A19/S3/7W/30K/S/FIL/STD	Spiral	7	E26	120	3 000	80	Clear	15 000	800	60	1/40
ST19												
67750	ST19/S3/4.5W/27K/O/FIL/STD	Oblique	4.5	E26	120	2 700	80	Clear	15 000	450	40	1/40
67748	ST19/S3/4.5W/27K/S/FIL/STD	Spiral	4.5	E26	120	2 700	80	Clear	15 000	450	40	1/40
67749 ¹	ST19/S3/4.5W/30K/S/FIL/STD	Spiral	4.5	E26	120	3 000	80	Clear	15 000	450	40	1/40
67162 ¹	ST19/S2/7W/27K/V/FIL/STD	Vertical	7	E26	120	2 700	80	Clear	15 000	800	60	10/40
67163 ¹	ST19/S2/7W/30K/V/FIL/STD	Vertical	7	E26	120	3 000	80	Clear	15 000	800	60	10/40
G16.5												
67762	G16.5/S3/5W/27K/E12/V/FIL/STD	Vertical	5	E12	120	2700	80	Clear	15 000	500	60	10/100
67764	G16.5/S3/5W/27K/V/FIL/STD	Vertical	5	E26	120	2 700	80	Clear	15 000	500	60	10/100
G25												
67663 ¹	G25/S3/4.5W/27K/O/FIL/STD	Oblique	4.5	E26	120	2 700	80	Clear	15 000	450	40	10/40
67664 ¹	G25/S3/7W/27K/V/FIL/STD	Vertical	7	E26	120	2 700	80	Clear	15 000	800	60	10/40
G40												
67666 ¹	G40/S3/4.5W/27K/O/FIL/STD	Oblique	4.5	E26	120	2 700	80	Clear	15 000	450	40	5/20

Lumen values are derived from photometric testing
 For a complete list of compatible dimmers and ENERGY STAR qualified products,
 please visit www.standardpro.com

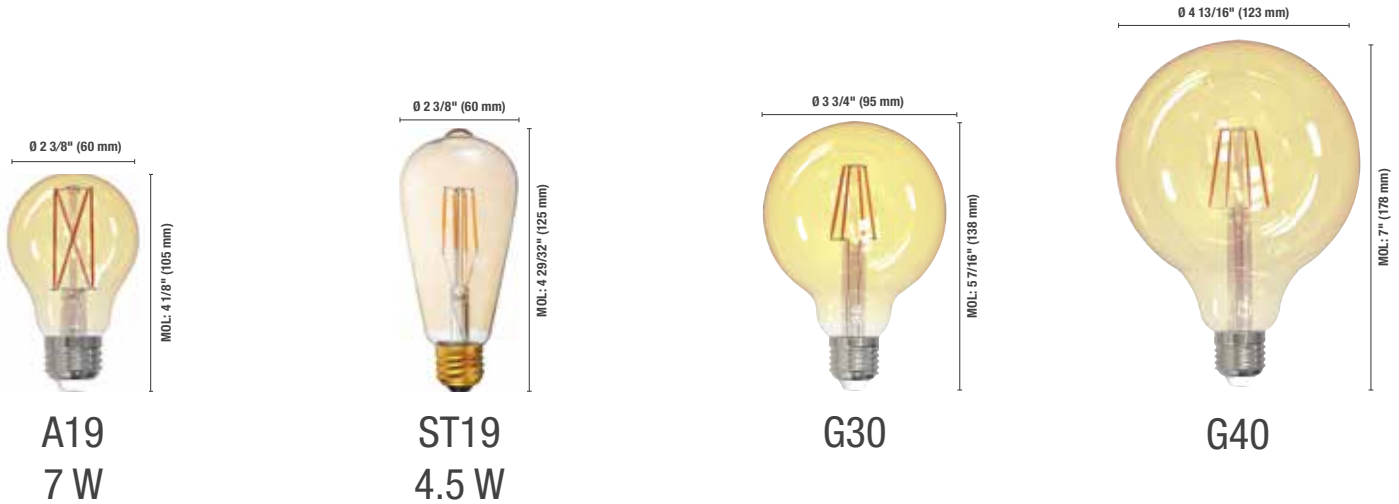




Order code	Description	Filament type	Watts (W)	Base	Volts (VAC)	Color temp. (K)	CRI	Finish	Life L70 (hrs)	Lumen output (lm)	Traditional equivalent (W)	Case qty (inner/master)
B11												
67753	B11/S3/2.5W/27K/E12/V/FIL/STD	Vertical	2.5	E12	120	2 700	80	Clear	15 000	250	25	10/100
67752	B11/S3/4W/27K/V/FIL/STD	Vertical	4	E26	120	2 700	80	Clear	15 000	350	40	100
67754	B11/S3/5W/27K/E12/V/FIL/STD	Vertical	5	E12	120	2 700	80	Clear	15 000	500	60	100
67755	B11/S3/5W/30K/E12/V/FIL/STD	Vertical	5	E12	120	3 000	80	Clear	15 000	500	60	100
67756	B11/S3/5W/40K/E12/V/FIL/STD	Vertical	5	E12	120	4 000	80	Clear	15 000	500	60	10/100
67757	B11/S3/5W/50K/E12/V/FIL/STD	Vertical	5	E12	120	5 000	80	Clear	15 000	500	60	100
CA11												
65674	LED/CA11/S2/4.8W/27K/E12/V/FIL/STD	Vertical	4.8	E12	120	2 700	80	Clear	15 000	398	60	1/80
T6												
67765	T6/S3/4.5W/27K/E12/V/FIL/STD	Vertical	4.5	E12	120	2 700	80	Clear	15 000	450	40	10/100
67766	T6/S3/4.5W/30K/E12/V/FIL/STD	Vertical	4.5	E12	120	3 000	80	Clear	15 000	450	40	25/200
T9												
67782	T9/S3/5W/27K/O/FIL/STD	Oblique	5	E26	120	2 700	80	Clear	15 000	500	60	100
67784	T9/S3/5W/30K/O/FIL/STD	Oblique	5	E26	120	3 000	80	Clear	15 000	500	60	100
T10												
64520 ²	LED/T10/6W/27K/LL/V/FIL/STD	Vertical	6	E26	120	2 700	95	Clear	25 000	600	60	50/100
64522 ²	LED/T10/6W/27K/LL/Z/FIL/STD	Zig-Zag	6	E26	120	2 700	95	Clear	25 000	600	60	50/100

Lumen values are derived from photometric testing
 For a complete list of compatible dimmers and ENERGY STAR qualified products,
 please visit www.standardpro.com





Order code	Description	Filament type	Watts (W)	Base	Volts (VAC)	Color temp. (K)	CRI	Finish	Life L70 (hrs)	Lumen output (lm)	Traditional equivalent (W)	Case qty (inner/master)
Victorian Style												
A19												
67767	A19/S3/7W/22K/A/S/FIL/STD	Spiral	7	E26	120	2 200	80	Amber	15 000	650	40	10/40
ST19												
67768	ST19/S3/4.5W/22K/A/O/FIL/STD	Oblique	4.5	E26	120	2 200	80	Amber	15 000	380	40	40
G30												
67665	G30/S3/4.5W/22K/A/O/FIL/STD	Oblique	4.5	E26	120	2 200	80	Amber	15 000	380	40	10/40
G40												
67668	G40/S3/4.5W/22K/A/O/FIL/STD	Oblique	4.5	E26	120	2 200	80	Amber	15 000	380	40	5/20

Lumen values are derived from photometric testing
 For a complete list of compatible dimmers and ENERGY STAR qualified products, please visit www.standardpro.com





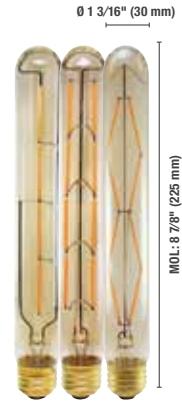
B11



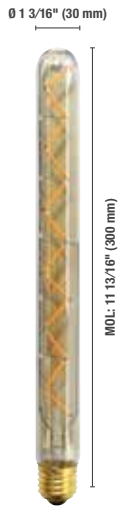
CA11



T14
Long Life



T10
Long Life



T10L
Long Life

Order code	Description	Filament type	Watts (W)	Base	Volts (VAC)	Color temp. (K)	CRI	Finish	Life L70 (hrs)	Lumen output (lm)	Traditional equivalent (W)	Case qty (inner/master)
Victorian Style												
B11												
67758	B11/S3/3.6W/22K/A/E12/V/FIL/STD	Vertical	3.6	E12	120	2 200	80	Amber	15 000	320	40	100
CA11												
67761	CA11/S3/4.5W/22K/A/E12/V/FIL/STD	Vertical	4.5	E12	120	2 200	80	Amber	15 000	350	40	10/100
T14												
64529 ²	LED/T14/6W/22K/LL/A/S/FIL/STD	Spiral	6	E26	120	2 200	95	Amber	25 000	450	40	50/100
T10												
64521 ²	LED/T10/6W/22K/LL/AV/FIL/STD	Vertical	6	E26	120	2 200	95	Amber	25 000	450	40	50/100
64523 ²	LED/T10/6W/22K/LL/A/Z/FIL/STD	Zig-Zag	6	E26	120	2 200	95	Amber	25 000	450	40	50/100
T10L												
64525 ²	LED/T10L/6W/22K/LL/A/Z/FIL/STD	Zig-Zag	6	E26	120	2 200	95	Amber	25 000	450	40	50/100

Lumen values are derived from photometric testing
For a complete list of compatible dimmers and ENERGY STAR qualified products, please visit www.standardpro.com

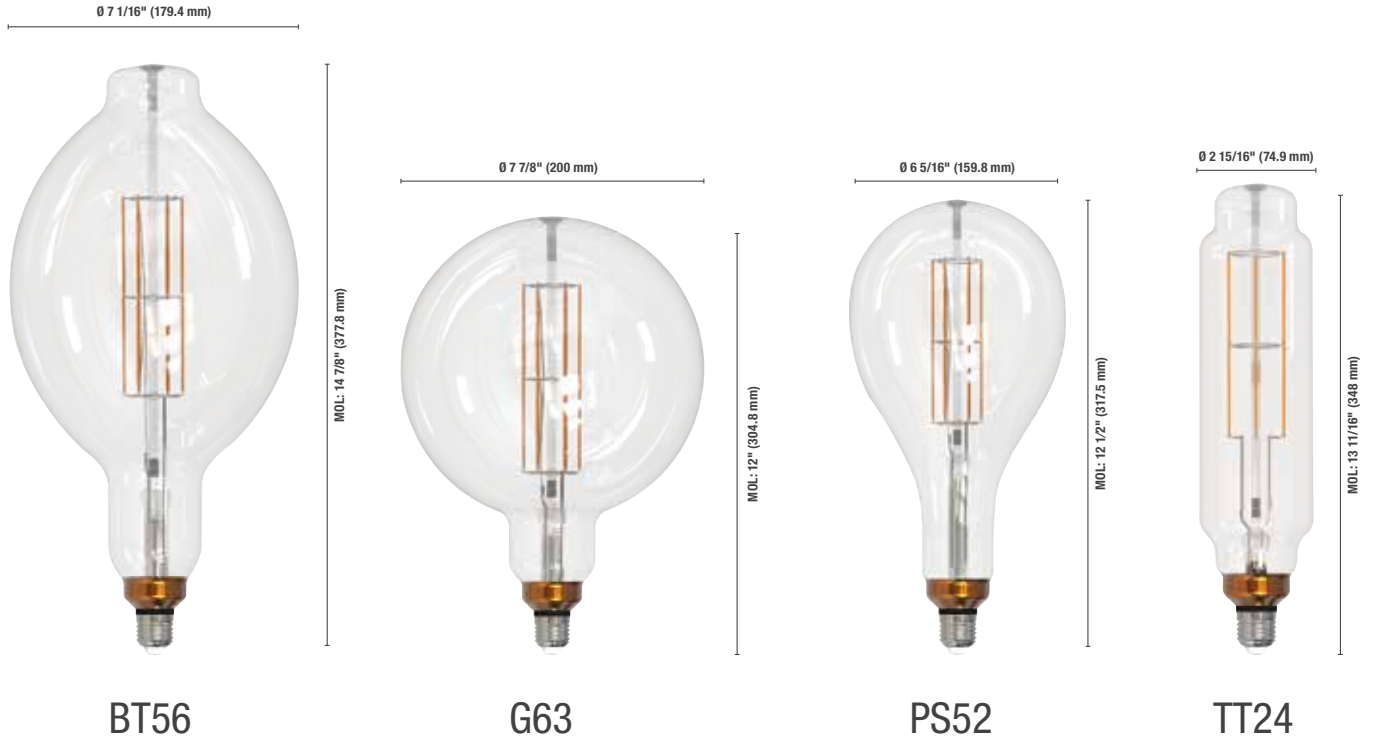
6 damp location
dimmmable
2 yrs warranty
3 yrs warranty
cUL us
ENERGY STAR



Order code	Description	Filament type	Watts (W)	Base	Volts (VAC)	Color temp. (K)	CRI	Finish	Life L70 (hrs)	Lumen output (lm)	Case qty (inner/master)
Soft Filament											
A19											
67315	A19/4.5W/27K/QL/FIL/STD	Quad Loop	4.5	E26	120	2 700	90	Clear	15 000	250	50/100
ST19											
67317	ST19/5W/27K/DH/FIL/STD	Double Helix	5	E26	120	2 700	90	Clear	15 000	300	50/100
67318	ST19/5W/27K/CH/DH/FIL/STD	Double Helix	5	E26	120	2 700	90	Chrome	15 000	125	50/100
67319	ST19/5W/27K/A/DH/FIL/STD	Double Helix	5	E26	120	2 700	90	Amber	15 000	250	50/100

Lumen values are derived from photometric testing
For a complete list of compatible dimmers, please visit www.standardpro.com

6 damp location dimmable enclosed fixture 3 yrs warranty cULus



BT56

G63

PS52

TT24

Order code	Description	Filament type	Watts (W)	Base	Volts (VAC)	Color temp. (K)	CRI	Life L70 (hrs)	Lumen output (lm)	Traditional equivalent (W)	Case qty (master)
Large Filament											
BT56											
67321	BT56/8W/27K/V/FIL/STD	Vertical	8	E26	120	2 700	80	15 000	900	60	4
G63											
67320	G63/8W/27K/V/FIL/STD	Vertical	8	E26	120	2 700	80	15 000	900	60	4
PS52											
67322	PS52/8W/27K/V/FIL/STD	Vertical	8	E26	120	2 700	80	15 000	900	60	4
TT24											
67323	TT24/8W/27K/V/FIL/STD	Vertical	8	E26	120	2 700	80	15 000	900	60	4

Lumen values are derived from photometric testing
 For a complete list of compatible dimmers, please visit www.standardpro.com





LED Reflector

Allowing you to focus light where it matters, these LED reflectors will not let your colors fade. Choose from many sizes, color temperatures and beam distributions to create the perfect lighting with consistent lamp to lamp color.

Reduce energy consumption and protect all goods and materials that are sensitive to heat and UV emissions.

STANDARD's LED reflectors are ideal for tracks, recessed luminaires and accent lighting in residential, retail, hospitality and commercial applications.



MR11



MR16



GU10

Order code	Description	Watts (W)	Base	Volts (VAC)	Color temp. (K)	CRI	Life L70 (hrs)	Lumen output (lm)	Beam angle (°)	CBCP (cd)	Traditional equivalent (W)	Case qty (master)
MR11												
64244 ¹	LED/MR11/4W/30K/38/GU4/ND/STD	4	GU4	12	3 000	80	25 000	260	38	550	30	48
MR16												
68263	MR16/S2/7.5W/27K/25/STD	7.5	MR16	12	2 700	90	54 000	570	25	3 196	75	60
68259	MR16/S2/7.5W/27K/35/STD	7.5	GU5.3	12	2 700	90	50 000	570	35	1 908	75	60
68264	MR16/S2/7.5W/30K/25/STD	7.5	GU5.3	12	3 000	90	54 000	570	25	3 268	50	60
68260	MR16/S2/7.5W/30K/35/STD	7.5	GU5.3	12	3 000	90	50 000	570	35	1 905	75	60
68265	MR16/S2/7.5W/40K/25/STD	7.5	GU5.3	12	4 000	90	50 000	570	25	3 613	75	60
68261	MR16/S2/7.5W/40K/35/STD	7.5	GU5.3	12	4 000	90	50 000	570	35	2 066	75	60
68262	MR16/S2/7.5W/50K/35/STD	7.5	GU5.3	12	5 000	90	54 000	570	35	2 020	50	60
GU10												
68252	GU10/S2/6.5W/27K/25/STD	6.5	GU10	120	2 700	90	54 000	570	25	1 975	75	60
68255	GU10/S2/6.5W/27K/35/STD	6.5	GU10	120	2 700	90	54 000	570	35	1 231	75	60
68253	GU10/S2/6.5W/30K/25/STD	6.5	GU10	120	3 000	90	54 000	570	25	1 975	75	60
68256	GU10/S2/6.5W/30K/35/STD	6.5	GU10	120	3 000	90	54 000	570	35	1 996	50	60
68254	GU10/S2/6.5W/40K/25/STD	6.5	GU10	120	4 000	90	54 000	570	25	1 975	50	60
68257	GU10/S2/6.5W/40K/35/STD	6.5	GU10	120	4 000	90	54 000	570	35	1 231	50	60
68258	GU10/S2/6.5W/50K/35/STD	6.5	GU10	120	5 000	90	54 000	570	35	1 231	50	60

Lumen values are derived from photometric testing
 For a complete list of compatible dimmers and ENERGY STAR qualified products, please visit www.standardpro.com





Order code	Description	Watts (W)	Base	Volts (VAC)	Color temp. (K)	CRI	Life L70 (hrs)	Lumen output (lm)	Beam angle (°)	CBCP (cd)	Traditional equivalent (W)	Case qty (master)
PAR16												
63990	LED/P16/6.5W/30K/38/STD	6.5	E26	120	3 000	82	40 000	582	38	1 242	50	24
63991	LED/P16/6.5W/40K/38/STD	6.5	E26	120	4 000	83	40 000	635	38	1 298	50	24
PAR20												
68218	P20/S2/7W/27K/25/STD	7	E26	120	2 700	90	54 000	550	25	3 422	50	12
68219	P20/S2/7W/27K/40/STD	7	E26	120	2 700	92	54 000	550	40	1 253	50	12
68220	P20/S2/7W/30K/25/STD	7	E26	120	3 000	90	54 000	550	25	3 572	50	12
68221	P20/S2/7W/30K/40/STD	7	E26	120	3 000	90	54 000	550	40	1 303	50	12
65380 ²	LED/P20HO/7W/30K/35/STD	7	E26	120	3 000	82	25 000	660	35	1 374	-	50
68222	P20/S2/7W/40K/25/STD	7	E26	120	4 000	90	54 000	550	25	3 829	50	12
68224	P20/S2/7W/40K/40/STD	7	E26	120	4 000	90	54 000	550	40	1 358	50	12
68225	P20/S2/7W/50K/25/STD	7	E26	120	5 000	90	54 000	550	25	2 350	50	12
68226	P20/S2/7W/50K/40/STD	7	E26	120	5 000	90	54 000	550	40	1 257	50	12
PAR30SN												
68227	P30S/S2/12W/27K/25/STD	10	E26	120	2 700	90	54 000	1 050	25	4 981	75	6
68228	P30S/S2/12W/27K/40/STD	12	E26	120	2 700	90	50 000	1 050	40	2 337	75	6
63970 ¹	LED/P30S/10W/30K/25/STD	10	E26	120	3 000	94	40 000	830	25	2 174	75	6
68230	P30S/S2/12W/30K/40/STD	10	E26	120	3 000	90	54 000	1 050	40	2 470	75	6
68231	P30S/S2/12W/40K/25/STD	12	E26	120	4 000	90	54 000	1 050	25	4 450	75	6
68232	P30S/S2/12W/40K/40/STD	12	E26	120	4 000	90	50 000	1 050	40	2 711	75	6
63975 ¹	LED/P30S/10W/50K/25/STD	10	E26	120	5 000	96	40 000	865	25	2 477	75	6
63976 ¹	LED/P30S/10W/50K/40/STD	10	E26	120	5 000	96	40 000	865	40	1 607	75	6

Lumen values are derived from photometric testing
 For a complete list of compatible dimmers and ENERGY STAR qualified products, please visit www.standardpro.com
¹ Not Energy Star
² Consult factory for availability





Order code	Description	Watts (W)	Base	Volts (VAC)	Color temp. (K)	CRI	Life L70 (hrs)	Lumen output (lm)	Beam angle (°)	CBCP (cd)	Traditional equivalent (W)	Case qty (inner/master)
PAR30LN												
68235	P30L/S2/12W/27K/25/STD	12	E26	120	2 700	90	50 000	1 050	25	5 240	75	6
68236	P30L/S2/12W/27K/40/STD	12	E26	120	2 700	90	54 000	1 050	40	2 117	75	6
68237	P30L/S2/12W/30K/25/STD	12	E26	120	3 000	90	54 000	1 050	25	5 137	75	6
68238	P30L/S2/12W/30K/40/STD	12	E26	120	3 000	90	50 000	1 050	40	2 639	75	6
68239	P30L/S2/12W/40K/25/STD	10	E26	120	4 000	90	54 000	1 050	25	5 359	75	6
68240	P30L/S2/12W/40K/40/STD	12	E26	120	4 000	90	54 000	1 050	40	2 767	75	6
68241	P30L/S2/12W/50K/25/STD	10	E26	120	5 000	90	54 000	1 050	25	5 473	75	6
68242	P30L/S2/12W/50K/40/STD	10	E26	120	5 000	90	54 000	1 050	40	2 471	75	6
PAR38												
68243	P38/S2/16.5W/27K/25/STD	15	E26	120	2 700	90	54 000	1 370	25	7 056	100	1/6
68244	P38/S2/16.5W/27K/40/STD	16.5	E26	120	2 700	90	50 000	1 370	40	2 783	120	1/6
68245	P38/S2/16.5W/30K/25/STD	16.5	E26	120	3 000	90	50 000	1 370	25	7 354	120	1/6
68246	P38/S2/16.5W/30K/40/STD	16.5	E26	120	3 000	90	50 000	1 370	40	3 127	120	1/6
68247	P38/S2/16.5W/40K/25/STD	16.5	E26	120	4 000	90	50 000	1 370	25	6 800	120	1/6
68249	P38/S2/16.5W/40K/40/STD	16.5	E26	120	4 000	90	54 000	1 370	40	3 237	120	1/6
68250	P38/S2/16.5W/50K/25/STD	16.5	E26	120	5 000	90	54 000	1 370	25	6 800	120	1/6
68251	P38/S2/16.5W/50K/40/STD	16.5	E26	120	5 000	90	50 000	1 370	40	2 842	120	1/6

Lumen values are derived from photometric testing
 For a complete list of compatible dimmers and ENERGY STAR qualified products, please visit www.standardpro.com
² Not Energy Star
³ Consult factory for availability





Order code	Description	Watts (W)	Base	Volts (VAC)	Color temp. (K)	CRI	Life L70 (hrs)	Lumen output (lm)	Beam angle (°)	CBCP (cd)	Traditional equivalent (W)	Case qty (inner/master)
PAR38HO												
67909	P38HO/27W/30K/40/120-277/STD	27	E26	120-277	3 000	80	50 000	3 000	40	3 272	250	1/6
67910	P38HO/27W/35K/40/120-277/STD	27	E26	120-277	3 500	80	50 000	3 000	40	3 272	250	1/6
R20												
64964 ²	LED/R20/S2/6.5W/27K/STD	6.5	E26	120	2 700	83	25 000	525	107	180	50	6/24
BR30												
64965 ²	LED/BR30/S2/8W/27K/STD	8	E26	120	2 700	84	25 000	650	105	220	65	6/24
64966 ²	LED/BR30/S2/8W/40K/STD	8	E26	120	4 000	82	25 000	700	105	240	65	6/24
BR40												
66032 ²	LED/BR40/S2/16.5W/27K/STD	16.5	E26	120	2 700	82	25 000	1 252	103	445	85	6/24

Lumen values are derived from photometric testing
 For a complete list of compatible dimmers and ENERGY STAR qualified products, please visit www.standardpro.com





LED General Purpose

Combining a comfortable, pleasing atmosphere with energy efficiency is now possible with STANDARD's smooth dimming LED lamps. Choose from our large selection of lamp shapes and create your own style while saving on energy and maintenance costs.

From Omni lamps to small halogen replacements, these lamps deliver a brighter look and provide the same even, crisp and comfortable lighting as traditional lamps. A wide selection of color temperatures is offered to obtain the desired lighting effect and can be adapted to all applications.



A19

A19 4 pack

A19 GU24

Order code	Description	Watts (W)	Base	Volts (VAC)	Color temp. (K)	Finish	CRI	Life L70 (hrs)	Lumen output (lm)	Traditional equivalent (W)	Dimming capability (Yes/No)	Case qty (inner/master)
A19 40 W equivalent												
67948	LED/A19/S5/6W/27K/STD	6	E26	120	2 700	Frost	80	25 000	480	40	Yes	1/100
67949	LED/A19/S5/6W/30K/STD	6	E26	120	3 000	Frost	80	25 000	480	40	Yes	1/100
67950	LED/A19/S5/6W/40K/STD	6	E26	120	4 000	Frost	80	25 000	480	40	Yes	1/100
67951	LED/A19/S5/6W/50K/STD	6	E26	120	5 000	Frost	80	25 000	480	40	Yes	1/100
60 W equivalent												
67952	LED/A19/S5/9W/27K/STD	9	E26	120	2 700	Frost	80	25 000	800	60	Yes	1/100
67953	LED/A19/S5/9W/30K/STD	9	E26	120	3 000	Frost	80	25 000	800	60	Yes	1/100
67954	LED/A19/S5/9W/40K/STD	9	E26	120	4 000	Frost	80	25 000	800	60	Yes	1/100
67955	LED/A19/S5/9W/50K/STD	9	E26	120	5 000	Frost	80	25 000	800	60	Yes	1/100
60 W equivalent - 4 pack												
68001	LED/A19/S2/9W/27K/STD 4P	9	E26	120	2 700	Frost	80	25 000	800	60	Yes	1/96
68002	LED/A19/S2/9W/30K/STD 4P	9	E26	120	3 000	Frost	80	25 000	800	60	Yes	1/96
68003	LED/A19/S2/9W/40K/STD 4P	9	E26	120	4 000	Frost	80	25 000	800	60	Yes	1/96
68004	LED/A19/S2/9W/50K/STD 4P	9	E26	120	5 000	Frost	80	25 000	800	60	Yes	1/96
60 W equivalent - GU24												
66275	A19/9.8W/27K/GU24/PRO/STD	9.8	GU24	120	2 700	Frost	83	25 000	814	60	Yes	6/48
66276	A19/9.8W/30K/GU24/PRO/STD	9.8	GU24	120	3 000	Frost	82	25 000	887	60	Yes	6/48
66277	A19/9.8W/40K/GU24/PRO/STD	9.8	GU24	120	4 000	Frost	86	25 000	868	60	Yes	6/48
75 W equivalent												
66184	LED/A19/S4/11W/27K/STD	11	E26	120	2 700	Frost	81	25 000	1 109	75	Yes	6/48
67957	LED/A19/S5/12W/30K/STD	12	E26	120	3 000	Frost	80	25 000	1 100	75	Yes	1/100
67958	LED/A19/S5/12W/40K/STD	12	E26	120	4 000	Frost	80	25 000	1 100	75	Yes	1/100
67959	LED/A19/S5/12W/50K/STD	12	E26	120	5 000	Frost	80	25 000	1 100	75	Yes	1/100
100 W equivalent												
66188	LED/A19/S4/15W/27K/STD	15	E26	120	2 700	Frost	82	25 000	1 629	100	Yes	6/48
66189	LED/A19/S4/15W/30K/STD	15	E26	120	3 000	Frost	81	25 000	1 630	100	Yes	6/48
66190	LED/A19/S4/15W/40K/STD	15	E26	120	4 000	Frost	85	25 000	1 692	100	Yes	6/48
66191	LED/A19/S4/15W/50K/STD	15	E26	120	5 000	Frost	85	25 000	1 725	100	Yes	6/48

Lumen values are derived from photometric testing
For a complete list of compatible dimmers and ENERGY STAR qualified products, please visit www.standardpro.com





A21



A19 15 W & Trilight

Order code	Description	Watts (W)	Base	Volts (VAC)	Color temp. (K)	Finish	CRI	Life L70 (hrs)	Lumen output (lm)	Traditional equivalent (W)	Dimming capability (Yes/No)	Case qty (inner/master)
A21												
100 W equivalent												
67960	LED/A21/S5/15W/27K/STD	15	E26	120	2 700	Frost	80	25 000	1 600	100	Yes	1/100
67961	LED/A21/S5/15W/30K/STD	15	E26	120	3 000	Frost	80	25 000	1 600	100	Yes	1/100
67962	LED/A21/S5/15W/40K/STD	15	E26	120	4 000	Frost	80	25 000	1 600	100	Yes	1/100
67963	LED/A21/S5/15W/50K/STD	15	E26	120	5 000	Frost	80	25 000	1 600	100	Yes	1/100
Trilight												
65613	LED/A19/S2/12W/27K/3WAY/STD	3	E26	120	2 700	Frost	81	25 000	280	30	No	6/24
		9							950	70		
		12							1 200	100		
65614	LED/A19/S2/12W/30K/3WAY/STD	3	E26	120	3 000	Frost	83	25 000	280	30	No	6/24
		9							950	70		
		12							1 200	100		

Lumen values are derived from photometric testing
 For a complete list of compatible dimmers and ENERGY STAR qualified products, please visit www.standardpro.com





Order code	Description	Watts (W)	Base	Volts (VAC)	Color temp. (K)	Finish	Life L70 (hrs)	Lumen output (lm)	Traditional equivalent (W)	Case qty (inner/master)
A15										
66758	A15/S2/6W/27K/CL/STD	6	E26	120	2 700	Clear	15 000	514	60	24/48
66759	A15/S2/5.5W/27K/FR/STD	5.5	E26	120	2 700	Frost	15 000	496	60	24/48
66760	A15/S2/6W/30K/CL/STD	6	E26	120	3 000	Clear	15 000	592	60	24/48
66761	A15/S2/5.5W/30K/FR/STD	5.5	E26	120	3 000	Frost	15 000	511	60	24/48
66762	A15/S2/5.5W/40K/FR/STD	5.5	E26	120	4 000	Frost	15 000	530	60	24/48
C12										
66763	C12/S2/4.5W/27K/CL/STD	4.5	E26	120	2 700	Clear	15 000	322	40	24/48
66764	C12/S2/4.5W/27K/E12/CL/STD	4.5	E12	120	2 700	Clear	15 000	322	60	24/48
66765	C12/S2/4.5W/27K/E12/FR/STD	4.5	E12	120	2 700	Frost	15 000	331	60	24/48
G16.5										
66766	G16.5/S2/5W/27K/E12/CL/STD	5	E12	120	2 700	Clear	15 000	365	60	24/48
G25										
66768	G25/S2/7W/27K/FR/STD	7	E26	120	2 700	Frost	15 000	553	60	24/48
66769	G25/S2/7W/30K/FR/STD	7	E26	120	3 000	Frost	15 000	553	60	24/48

Lumen values are derived from photometric testing
 For a complete list of compatible dimmers and ENERGY STAR qualified products, please visit www.standardpro.com





T3 - 78 mm

T3 - 118 mm

Order code	Description	Watts (W)	Base	Volts (VAC)	Color temp. (K)	Finish	Life L70 (hrs)	Lumen output (lm)	Beam angle (°)	Traditional equivalent (W)	Dimming capability (Yes/No)	Case qty (inner/master)
G4												
67093 ^{1 2}	G4/S2/12V/2.3W/30K/STD	2.3	G4	12	3 000	Clear	15 000	230	360	20	Yes	100/1 000
67094 ^{1 2}	G4/S2/12V/2.3W/40K/STD	2.3	G4	12	4 000	Clear	15 000	230	360	20	Yes	100/1 000
G9												
63444 ²	LED/G9/3.5W/27K/STD	3.5	G9	120	2 700	Frost	30 000	210	300	20	Yes	50/500
63445 ²	LED/G9/3.5W/30K/STD	3.5	G9	120	3 000	Frost	30 000	225	300	20	Yes	50/500
63446 ²	LED/G9/3.5W/40K/STD	3.5	G9	120	4 000	Frost	30 000	245	300	20	Yes	50/500
67941 ³	G9HO/S3/5W/30K/CL/STD	5	G9	120	3 000	Clear	15 000	480	360	40	Yes	50/500
67942 ³	G9HO/S3/5W/50K/CL/STD	5	G9	120	5 000	Clear	15 000	480	360	40	Yes	50/500
67943	G9HO/S3/5W/27K/FR/STD	5	G9	120	2 700	Frost	15 000	430	360	35	Yes	50/500
67944	G9HO/S3/5W/30K/FR/STD	5	G9	120	3 000	Frost	15 000	430	360	35	Yes	50/500
67945	G9HO/S3/5W/40K/FR/STD	5	G9	120	4 000	Frost	15 000	430	360	35	Yes	50/500
T3-R7S												
64466 ¹	LED/R7S/5W/30K/78/ND/STD	5	R7S	120	3 000	Clear	15 000	450	360	50	No	50/200
64467 ¹	LED/R7S/8W/30K/118/ND/STD	8	R7S	120	3 000	Clear	15 000	650	360	100	No	50/200

Lumen values are derived from photometric testing
 For a complete list of compatible dimmers, please visit www.standardpro.com
³ If used in totally enclosed luminaire life hours may be reduced by 50%





LED Fluorescent Replacement

Find the perfect LED alternative for fluorescent lamps while eliminating mercury content from your lighting system. Increased energy efficiency makes these lamps the ideal replacement for any application.

- Quality glass encasing ensures protection against tube yellowing and brittleness.
- LED lamps significantly reduce costly re-lamping charges.
- No start-up time required compared to traditional fluorescent lamps.

LED Ballast bypass – double ended

- Perfect for long term installations; no need to go back and replace the ballast at a later time.
- Best system efficiency; no additional power consumption from the ballast.
- Entirely safe to install; an embedded switch is used to validate connection before locking tube into place. Therefore, power will come through only once it is safely installed, eliminating any risk of electrical shock.
- No need to change sockets; can operate with shunted and non-shunted sockets.



T8 Ballast Bypass
120-277 V



T8 Ballast Bypass
277-347 V



T8 Ballast Bypass
120-347 V

Order code	Description	Watts (W)	Base	Volts (VAC)	Color temp. (K)	CRI	Life L70 (hrs)	Lumen output (lm)	Case qty (master)
T8 Bypass-double ended									
2'									
68426 ¹	T8/S2/9W/840/24/BYP/120-277/ND/STD	9	G13	120-277	4 000	82	56 000	1 200	25
3'									
68429	T8/S2/12W/840/36/BYP/120-277/ND/STD	12	G13	120-277	4 000	82	56 000	1 500	25
4' 120-277V									
68431	T8/S2/12.5W/835/48/BYP/120-277/ND/STD	12.5	G13	120-277	3 500	82	56 000	1 650	25
68432	T8/S2/12.5W/840/48/BYP/120-277/ND/STD	12.5	G13	120-277	4 000	82	56 000	1 750	25
68433 ¹	T8/S2/12.5W/850/48/BYP/120-277/ND/STD	12.5	G13	120-277	5 000	82	56 000	1 800	25
68434	T8/S2/15W/835/48/BYP/120-277/ND/STD	15	G13	120-277	3 500	82	56 000	2 000	25
68435	T8/S2/15W/840/48/BYP/120-277/ND/STD	15	G13	120-277	4 000	82	56 000	2 200	25
68436	T8/S2/15W/850/48/BYP/120-277/ND/STD	15	G13	120-277	5 000	82	56 000	2 200	25
4' 277-347V									
67377 ²	T8/15W/835/48/BYP/277-347/ND/STD	15	G13	277-347	3 500	82	50 000	2 000	25
4' 120-347V									
68437	T8/S2/11.5W/835/48/BYP/120-347/ND/STD	11.5	G13	120-347	3 500	82	56 000	1 750	25
68438	T8/S2/11.5W/840/48/BYP/120-347/ND/STD	11.5	G13	120-347	4 000	82	56 000	1 800	25
68439	T8/S2/11.5W/850/48/BYP/120-347/ND/STD	11.5	G13	120-347	5 000	82	56 000	1 800	25
68441	T8/S2/15W/840/48/BYP/120-347/ND/STD	15	G13	120-347	4 000	82	56 000	2 200	25
68442	T8/S2/15W/850/48/BYP/120-347/ND/STD	15	G13	120-347	5 000	82	56 000	2 200	25

Order code	Description	Watts (W)	Base	Volts (VAC)	Color temp. (K)	CRI	Life L70 (hrs)	Lumen output (lm)	Case qty (master)
------------	-------------	-----------	------	-------------	-----------------	-----	----------------	-------------------	-------------------

T5 Bypass-double ended 28 W replacement

66995 ¹	T5/13W/835/46/BYP/120-277/ND/STD	13	G5	120-277	3 500	82	50 000	1 600	25
66996 ¹	T5/13W/840/46/BYP/120-277/ND/STD	13	G5	120-277	4 000	82	50 000	1 650	25
66997 ¹	T5/13W/850/46/BYP/120-277/ND/STD	13	G5	120-277	5 000	82	50 000	1 700	25

54 W replacement

66998 ¹	T5/25W/840/46/BYP/120-277/ND/STD	25	G5	120-277	4 000	82	50 000	3 300	25
66999 ¹	T5/25W/850/46/BYP/120-277/ND/STD	25	G5	120-277	5 000	82	50 000	3 400	25
67160 ²	T5/25W/840/46/BYP/277-347/ND/STD	25	G5	277-347	4 000	82	50 000	3 300	25
67161 ²	T5/25W/850/46/BYP/277-347/ND/STD	25	G5	277-347	5 000	82	50 000	3 400	25



T5 Ballast Bypass

Lumen values are derived from photometric testing

For a complete list of compatible ballasts and DLC qualified products, please visit www.standardpro.com

¹ This lamp only operates on ballast bypass installation in 120-277V applications. Not for use in 347V direct line voltage applications

² This lamp only operates on ballast bypass installation in 277-347V application. Not for use in 120V direct line voltage applications

³ These products comply with UL1598C Standard for LED luminaire Retrofit kits



³



LED Safety Max™

With the same advantages as regular LED fluorescent replacement lamps, safety coated lamps are shatter resistant to protect employees, production, customers and your business' reputation.

- PTFE coated lamps help to contain broken glass if a lamp is dropped.
- Perfect solution for commercial kitchens, art galleries, museums and schools.



T8 Ballast Bypass 120-347 V SMX™

Order code	Description	Watts (W)	Base	Volts (VAC)	Color temp. (K)	CRI	Life L70 (hrs)	Lumen output (lm)	Case qty (master)
T8 Bypass-double ended Safety Max™									
4' 120-347V									
68448	T8/S2/15W/835/48/BYP/120-347/ND/STD/SMX	15	G13	120-347	3 500	82	50 000	2 100	25
68449	T8/S2/15W/840/48/BYP/120-347/ND/STD/SMX	15	G13	120-347	4 000	82	50 000	2 200	25
68450	T8/S2/15W/850/48/BYP/120-347/ND/STD/SMX	15	G13	120-347	5 000	82	50 000	2 200	25

Lumen values are derived from photometric testing
For a complete list of compatible ballasts and DLC qualified products, please visit www.standardpro.com
This lamp only operates on existing ballast in 120-277/347V application

¹ Not DLC

² LBF= Low ballast factor, NBF= Normal ballast factor, HBF= High ballast factor

³ Contact your sales representative for availabilities and lead times on these products

6
damp
location

5
yrs
warranty



CONFORMS TO NSF/ANSI 2

LED T8 Ballast Compatible

- Plug and play solution for quick and simple installation without any additional wiring needed.
- Compatible with a variety of electronic instant start, rapid start and program start ballasts.



T8
Ballast Compatible

LED T8 Metric Ballast Compatible

- LED T8 metric lamps are specifically designed for the Canadian market.
- Their 46" length makes these tubes perfect for many government building and educational facility fixtures.



T8 Metric
Ballast Compatible

Order code	Description	System watts (W)			Base	Color temp. (K)	CRI	Life L70 (hrs)	Lumen output (lm)			Case qty (master)
		LBF ²	NBF ²	HBF ²					LBF ²	NBF ²	HBF ²	
T8 Ballast compatible												
2'												
65473	LED/T8/S4/9W/840/24/STD	10	12	16	G13	4 000	80	50 000	1 100	1 350	1 800	25
3'												
67000	LED/T8/S4/11W/840/36/STD	12	14	20	G13	4 000	82	50 000	1 450	1 625	2 200	25
4'												
65474	LED/T8/S4/13W/835/48/STD	14	16	22	G13	3 500	80	50 000	1 550	1 800	2 400	25
65475	LED/T8/S4/13W/840/48/STD	14	16	22	G13	4 000	80	50 000	1 600	1 900	2 450	25
65476	LED/T8/S4/13W/850/48/STD	14	16	22	G13	5 000	80	50 000	1 700	2 000	2 500	25
65477	LED/T8/S4/15W/835/48/STD	16	18	26	G13	3 500	80	50 000	1 750	2 000	2 800	25
65478	LED/T8/S4/15W/840/48/STD	16	18	26	G13	4 000	80	50 000	1 800	2 100	2 850	25
65479	LED/T8/S4/15W/850/48/STD	16	18	26	G13	5 000	80	50 000	1 900	2 200	2 900	25
Metric 46"												
65049 ¹	LED/T8/15W/835/46/METRIC/STD	16	18	26	G13	3 500	83	50 000	1 650	1 850	2 650	25
65050 ¹	LED/T8/15W/840/46/METRIC/STD	16	18	26	G13	4 000	83	50 000	1 700	1 950	2 750	25

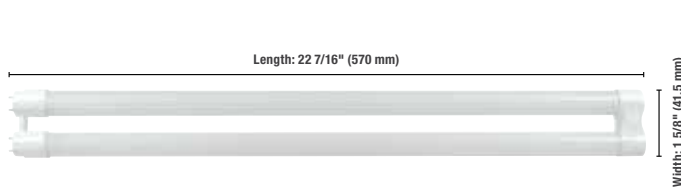
Lumen values are derived from photometric testing
For a complete list of compatible ballasts and DLC qualified products, please visit www.standardpro.com
This lamp only operates on existing ballast in 120-277/347V application

¹ Not DLC

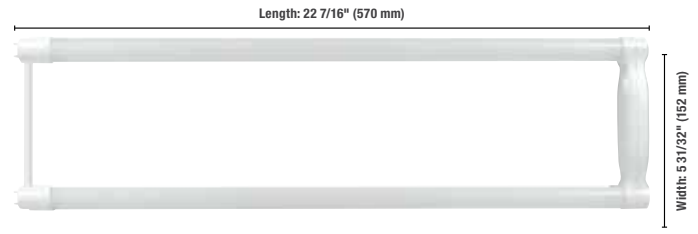
² LBF= Low ballast factor, NBF= Normal ballast factor, HBF= High ballast factor



LED - Fluorescent Replacement Lamp



U-Bent U1



U-Bent U6

Order code	Description	System watts (W)			Base	Color temp. (K)	CRI	Life L70 (hrs)	Lumen output (lm)			Case qty (master)
		LBF ²	NBF ²	HBF ²					LBF ²	NBF ²	HBF ²	
U-Bent												
66985 ³	T8/S2/15W/840/48/U1/ND/STD	16	18	24	G13	4 000	82	50 000	1 980	2 200	2 840	12
66986 ³	T8/S2/11.5W/835/48/U6/ND/STD	13	14	20	G13	3 500	82	50 000	1 570	1 750	2 270	12
66987 ³	T8/S2/11.5W/840/48/U6/ND/STD	13	14	20	G13	4 000	82	50 000	1 620	1 800	2 330	12
66988 ³	T8/S2/15W/840/48/U6/ND/STD	16	18	24	G13	4 000	82	50 000	1 980	2 200	2 840	12



T5 Ballast Compatible

Order code	Description	Watts (W)	Base	Color temp. (K)	CRI	Life L70 (hrs)	Lumen output (lm)	Case qty (master)
T5 Ballast Compatible								
28 W replacement								
66992 ³	T5/13W/835/46/STD	13	G5	3 500	82	50 000	1 800	25
66993 ³	T5/13W/840/46/STD	13	G5	4 000	82	50 000	1 850	25
66994 ³	T5/13W/850/46/STD	13	G5	5 000	82	50 000	1 900	25
54 W replacement								
65480	LED/T5/S2/25.5W/840/46/STD/SMX	25.5	G5	4 000	>80	50 000	3 100	25
65481	LED/T5/S2/25.5W/850/46/STD/SMX	25.5	G5	5 000	>80	50 000	3 150	25
65482 ¹	LED/T5/S2/25.5W/865/46/STD/SMX	25.5	G5	6 500	>80	50 000	3 200	25

Lumen values are derived from photometric testing
 For a complete list of compatible ballasts and DLC qualified products, please visit www.standardpro.com
 This lamp only operates on existing ballast in 120-277/347V application

¹ Not DLC
² LBF= Low ballast factor, NBF= Normal ballast factor, HBF= High ballast factor
³ Not safety max coated, glass tube only



CONFORMS TO NSF/ANSI 2

LED Safety Max™

With the same advantages as regular LED fluorescent replacement lamps, safety coated lamps are shatter resistant to protect employees, production, customers and your business' reputation.

- PTFE coated lamps help to contain broken glass if a lamp is dropped.
- All lamps are NSF rated for food equipment safety.
- Perfect solution for commercial kitchens, art galleries, museums and schools.



T8 Ballast Compatible Safety Max™

Order code	Description	System watts (W)			Base	Color temp. (K)	CRI	Life L70 (hrs)	Lumen output (lm)			Case qty (master)
		LBF ²	NBF ²	HBF ²					LBF ²	NBF ²	HBF ²	
T8 2'												
65505 ¹	LED/T8/S3/9W/835/24/STD/SMX	10	12	16	G13	3 500	80	50 000	1 000	1 200	1 600	25
65506	LED/T8/S3/9W/840/24/STD/SMX	10	12	16	G13	4 000	80	50 000	1 000	1 200	1 600	25
T8 3'												
67001	LED/T8/S4/11W/835/36/STD/SMX	12	14	20	G13	3 500	82	50 000	1 450	1 600	2 200	25
67002	LED/T8/S4/11W/840/36/STD/SMX	12	14	20	G13	4 000	82	50 000	1 450	1 625	2 250	25
T8 4'												
65507 ³	LED/T8/S4/13W/830/48/STD/SMX	12	16	23	G13	3 000	80	50 000	1 400	1 750	2 300	25
65508 ³	LED/T8/S4/13W/835/48/STD/SMX	12	16	23	G13	3 500	80	50 000	1 450	1 800	2 350	25
65509 ³	LED/T8/S4/13W/840/48/STD/SMX	12	16	23	G13	4 000	80	50 000	1 500	1 900	2 650	25
65510 ³	LED/T8/S4/13W/850/48/STD/SMX	12	16	23	G13	5 000	80	50 000	1 600	2 000	2 700	25
65511	LED/T8/S4/15W/830/48/STD/SMX	14	18	25	G13	3 000	80	50 000	1 550	1 950	2 650	25
65512	LED/T8/S4/15W/835/48/STD/SMX	14	18	25	G13	3 500	80	50 000	1 600	2 000	2 700	25
65513	LED/T8/S4/15W/840/48/STD/SMX	14	18	25	G13	4 000	80	50 000	1 650	2 100	2 750	25
65514	LED/T8/S4/15W/850/48/STD/SMX	14	18	25	G13	5 000	80	50 000	1 750	2 200	2 800	25

Lumen values are derived from photometric testing

For a complete list of compatible ballasts and DLC qualified products, please visit www.standardpro.com

This lamp only operates on existing ballast in 120-277/347V application

¹ Not DLC

² LBF= Low ballast factor, NBF= Normal ballast factor, HBF= High ballast factor

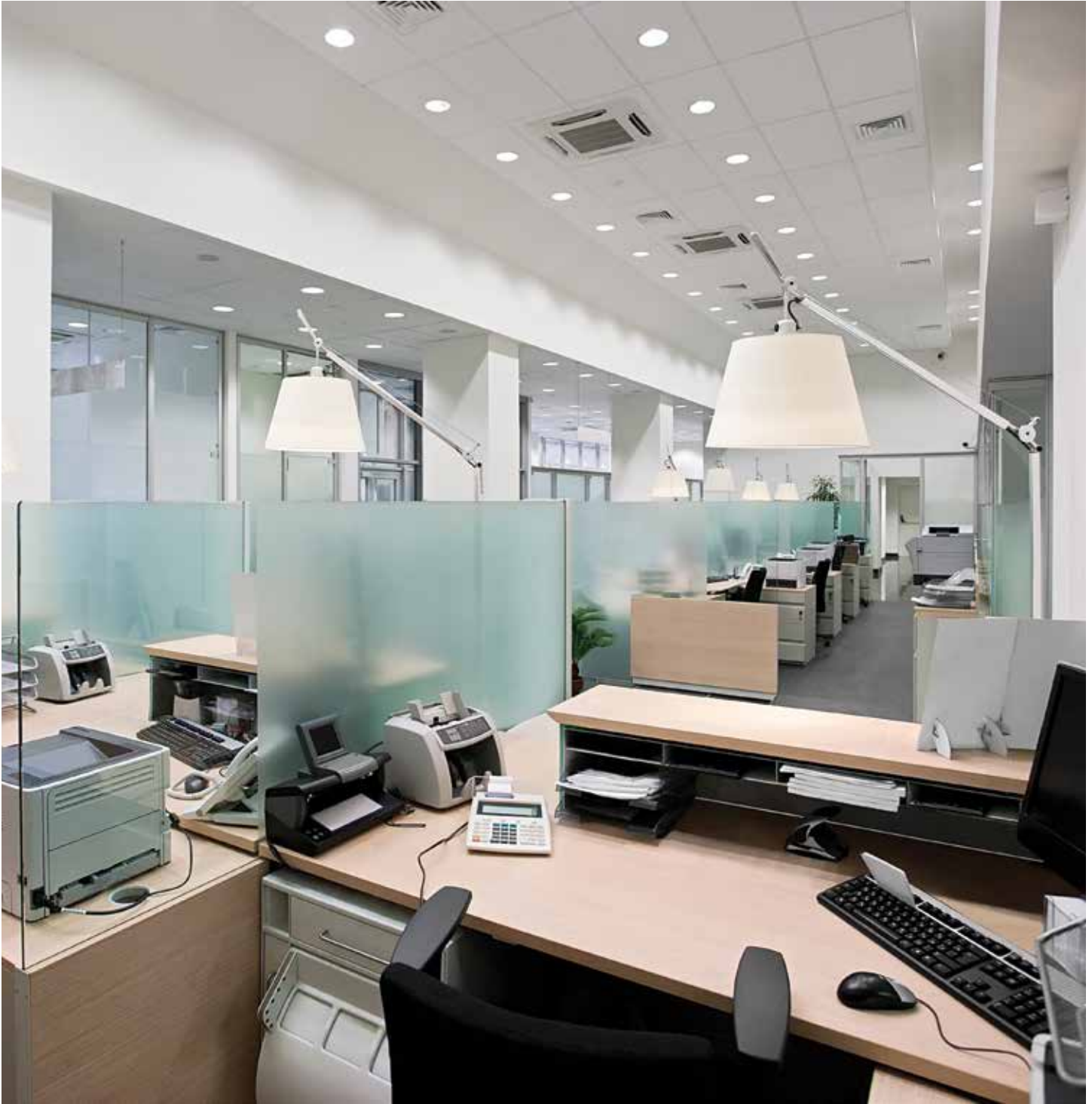
³ Contact your sales representative for availabilities and lead times on these products

6
damp
location

5
yrs
warranty



CONFORMS TO NSF/ANSI 2



LED CFL Replacement

LED lamps are the ideal solution to replace plug-in compact fluorescent lamps and are just as easy to install. These LED lamps are available in 2-pin and 4-pin, as well as in horizontal and vertical models.

They are perfect for use in commercial buildings, hotels and offices by providing an eco-friendly and cost saving alternative to any ceiling fixture, recessed can, downlight or sconce.



Horizontal



2G11

Order code	Description	Watts (W)	Base	Color temp. (K)	CRI	Life L70 (hrs)	Lumen output (lm)	Traditional equivalent (W) CFL	Operating position	Case qty (master)
PLL										
Electronic ballast compatible installation										
65603 ¹	LED/PLL/19W/35K/2G11/ND/STD	19	2G11	3 500	83	50 000	1 900	40	Horizontal	30
65604 ¹	LED/PLL/19W/40K/2G11/ND/STD	19	2G11	4 000	83	50 000	2 000	40	Horizontal	30

¹Lumen values are derived from photometric testing
¹This lamp only operates on electronic ballasts in 120-277/347 V applications



LED - CFL Replacement Lamp



Horizontal
Vertical



Horizontal



Horizontal



Vertical



Order code	Description	Watts (W)	Base*	Color temp. (K)	CRI	Life L70 (hrs)	Lumen output (lm)	Traditional equivalent (W) CFL	Operating position	Case qty (inner/master)
------------	-------------	-----------	-------	-----------------	-----	----------------	-------------------	--------------------------------	--------------------	-------------------------

PL 2-pins

Dual installation: Ballast compatible or bypass

65366 ¹	LED/PLV-H/6W/TT/27K/GX23/ND/STD	6	GX23	2 700	83	50 000	525	13	Vertical-Horizontal	1/20
65371 ¹	LED/PLH/6W/DTT/27K/GX23/ND/STD	6	GX23	2 700	83	50 000	500	13	Horizontal	10/50
65367 ¹	LED/PLV-H/6W/TT/40K/GX23/ND/STD	6	GX23	4 000	83	50 000	550	13	Vertical-Horizontal	1/20
65372 ¹	LED/PLH/6W/DTT/40K/GX23/ND/STD	6	GX23	4 000	83	50 000	525	13	Horizontal	10/50
64898 ¹	LED/PLVL/11W/27K/2P/ND/STD	11	G24d	2 700	82	50 000	947	18/26	Vertical	10/50
64899 ¹	LED/PLH/11W/27K/2P/ND/STD	11	G24d	2 700	82	50 000	962	18/26	Horizontal	10/50
64478 ¹	LED/PLVL/11W/40K/2P/ND/STD	11	G24d	4 000	84	50 000	1 144	18/26	Vertical	10/50
64479 ¹	LED/PLH/11W/40K/2P/ND/STD	11	G24d	4 000	85	50 000	1 132	18/26	Horizontal	10/50

*LED PL Bases Replacement for CFL bases

GX23	GX23, GX23-2
G24d	G24d-2, G24d-3

NOTE: These LED lamps are a direct replacement for the CFL bases listed above. However, the base compatibility of these LED lamps is not limited to the CFL bases mentioned above.

Lumen values are derived from photometric testing
 *This lamp only operates on magnetic ballasts or ballast bypass in 120-277V applications
 Not for use in 347V direct line voltage applications





Horizontal
6 W



Horizontal
13 W



Vertical
13 W



Order code	Description	Bare lamp watts (W)	System watts (W)	Base*	Color temp. (K)	CRI	Life L70 (hrs)	Lumen output (lm)	Traditional equivalent (W) CFL	Operating position	Case qty (inner/master)
------------	-------------	---------------------	------------------	-------	-----------------	-----	----------------	-------------------	--------------------------------	--------------------	-------------------------

PL 4-pins

Ballast bypass installation

65368 ^{1 3}	LED/PLH/6W/DTT/30K/G24q/ND/STD	6	-	G24q	3 000	83	50 000	525	13	Horizontal	10/50
65369 ^{1 3}	LED/PLH/6W/DTT/35K/G24q/ND/STD	6	-	G24q	3 500	83	50 000	500	13	Horizontal	10/50
65370 ^{1 3}	LED/PLH/6W/DTT/40K/G24q/ND/STD	6	-	G24q	4 000	83	50 000	525	13	Horizontal	10/50

Electronic ballast compatible installation

64470 ²	LED/PLVL/9W/27K/4P/ND/STD	9	13	G24q	2 700	81	50 000	997	18/26	Vertical	10/50
64471 ²	LED/PLH/9W/27K/4P/ND/STD	9	13	G24q	2 700	82	50 000	958	18/26	Horizontal	10/50
64472 ²	LED/PLVL/9W/30K/4P/ND/STD	9	13	G24q	3 000	81	50 000	1 043	18/26	Vertical	10/50
64473 ²	LED/PLH/9W/30K/4P/ND/STD	9	13	G24q	3 000	81	50 000	1 027	18/26	Horizontal	10/50
64474 ²	LED/PLVL/9W/35K/4P/ND/STD	9	13	G24q	3 500	80	50 000	1 118	18/26	Vertical	10/50
64475 ²	LED/PLH/9W/35K/4P/ND/STD	9	13	G24q	3 500	80	50 000	1 118	18/26	Horizontal	10/50
64476 ²	LED/PLVL/9W/40K/4P/ND/STD	9	13	G24q	4 000	84	50 000	1 166	18/26	Vertical	10/50
64477 ²	LED/PLH/9W/40K/4P/ND/STD	9	13	G24q	4 000	85	50 000	1 162	18/26	Horizontal	10/50

*LED PL Bases Replacement for CFL bases

G24q-6W	G24q-1, GX24q-1
G24q-13W	G24q-2, G24q-3, GX24q-2, GX24q-3

NOTE: These LED lamps are a direct replacement for the CFL bases listed above. However, the base compatibility of these LED lamps is not limited to the CFL bases mentioned above.

Lumen values are derived from photometric testing
¹ This lamp only operates on ballast bypass installation in 120-277V applications
 Not for use in 347V direct line voltage applications
² This lamp only operates on electronic ballasts in 120-277/347 V applications
³ Not DLC





LED High Intensity

Our high intensity LED lamps are an easy, cost saving retrofit solution that can replace up to 400 W HID lamps. With different color temperatures, wattages and base options, they are the perfect replacement for HID lamps. These LED retrofits are ideal for many applications such as churches, area lighting and industrial lighting.

No need for a time consuming fixture replacement, simply bypass the ballast and screw the lamp in. The ballast bypass is the best option for long term installations since it prevents the need to go back and replace the ballast at a later time, making it ideal for hard to reach spaces.



Durable heat sink design with silent integrated fan and safety cable included

Order code	Description	Watts (W)	Base	Volts (VAC)	Color temp. (K)	CRI	Life L70 (hrs)	Lumen output (lm)	Bare lamp lumen (lm)	Operating position	Case qty (master)
High Bay Retrofit 100-277 V											
67048 ¹	CRNHB/150W/40K/BYP/100-277/ND/EX39/STD	150	EX39	100-277	4 000	80	50 000	17 195	21 000	Vertical	4
67049 ¹	CRNHB/150W/50K/BYP/100-277/ND/EX39/STD	150	EX39	100-277	5 000	80	50 000	17 929	21 000	Vertical	4

Lumen values are derived from photometric testing
For a complete list of compatible ballasts and DLC qualified products, please visit www.standardpro.com
¹ A safety cable is included with this lamp to secure its installation in the fixture
Make sure to use this cable when installing the lamp to prevent the lamp from falling down





LED chips mounted on top for a 360° light output



22 W



36 W



54 W

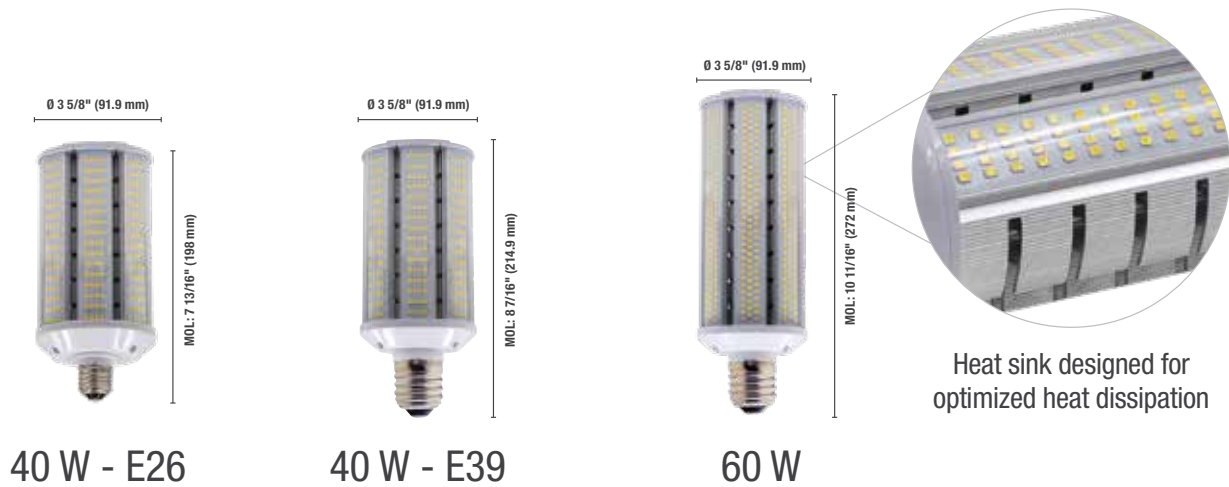


120 W

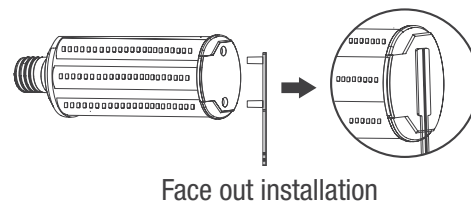
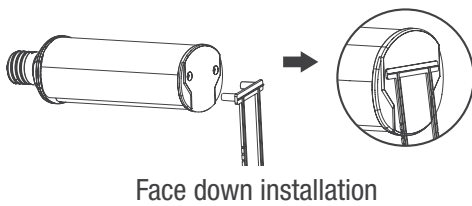
Order code	Description	Watts (W)	Base	Volts (VAC)	Color temp. (K)	CRI	Life L70 (hrs)	Lumen output (lm)	Operating position	Case qty (master)
360° 120-277 V										
67794 ¹	CRN/S2/22W/30K/BYP/120-277/ND/E26/STD	22	E26	120-277	3 000	80	50 000	2 579	Vertical	24
67795 ¹	CRN/S2/22W/40K/BYP/120-277/ND/E26/STD	22	E26	120-277	4 000	80	50 000	2 812	Vertical	24
67796	CRN/S2/22W/50K/BYP/120-277/ND/E26/STD	22	E26	120-277	5 000	80	50 000	2 668	Vertical	24
360° 120-347 V										
67923	CRN/S3/36W/30K/BYP/120-347/ND/E26/STD	36	E26	120-347	3 000	80	50 000	5 200	Vertical	12
67924	CRN/S3/36W/40K/BYP/120-347/ND/E26/STD	36	E26	120-347	4 000	80	50 000	5 200	Vertical	12
67925	CRN/S3/36W/50K/BYP/120-347/ND/E26/STD	36	E26	120-347	5 000	80	50 000	5 200	Vertical	12
67926	CRN/S3/54W/40K/BYP/120-347/ND/E39/STD	54	E39	120-347	4 000	80	50 000	7 800	Vertical	12
67927	CRN/S3/54W/50K/BYP/120-347/ND/E39/STD	54	E39	120-347	5 000	80	50 000	7 800	Vertical	12
67930	CRN/S3/120W/40K/BYP/120-347/ND/E39/STD	120	E39	120-347	4 000	80	50 000	16 800	Vertical	6
67931	CRN/S3/120W/50K/BYP/120-347/ND/E39/STD	120	E39	120-347	5 000	80	50 000	16 800	Vertical	6

Lumen values are derived from photometric testing
 For a complete list of compatible ballasts and DLC qualified products, please visit www.standardpro.com
¹ Not DLC
² A safety cable is included with this lamp to secure its installation in the fixture
 Make sure to use this cable when installing the lamp to prevent the lamp from falling down





Order code	Description	Watts (W)	Base	Volts (VAC)	Color temp. (K)	CRI	Life L70 (hrs)	Lumen output (lm)	Bare lamp lumen (lm)	Operating position	Case qty (master)
180° 100-277 V											
67052 ^{1 2}	CRN180/40W/40K/BYP/100-277V/ND/E26/STD	40	E26	100-277	4 000	80	50 000	3 706	6 000	Horizontal	12
67053 ²	CRN180/40W/40K/BYP/100-277V/ND/E39/STD	40	E39	100-277	4 000	80	50 000	3 706	6 000	Horizontal	12
67054 ²	CRN180/60W/40K/BYP/100-277V/ND/E39/STD	60	E39	100-277	4 000	80	50 000	5 658	9 000	Horizontal	12



Traditional Equivalent

LED	CFL	Incandescent	HID
22 W	32 W - 40 W	150 W - 200 W	50 W - 75 W
36 W - 40 W	55 W - 65 W	300 W	100 W - 150 W
54 W - 60 W	85 W - 105 W	500 W	150 W - 200 W
100 W	-	-	200 W - 250 W
120 W	-	-	250 W
150 W	-	-	400 W

Accessories

Order code	Description
10985	Mogul to Medium socket adaptor
10587	Mogul to Mogul socket extension

Lumen values are derived from photometric testing
For a complete list of compatible ballasts and DLC qualified products, please visit www.standardpro.com

¹ Not DLC

² Two lamp support accessories are included with this lamp to reduce weight on the socket and secure its installation in the fixture



damp location



enclosed fixture



non dimmable





LED Ambiance Amber

Ambiance Amber LED lamps deliver warm lighting, creating a comfortable and cozy atmosphere. These lamps offer comfort and style while minimizing energy and maintenance costs when compared to incandescent equivalents. Completely dimmable, they allow the user to create a desired mood for any application.

Combine Ambiance Amber LED lamps with LED filament lamps victorian style for a complete lighting effect!



A19

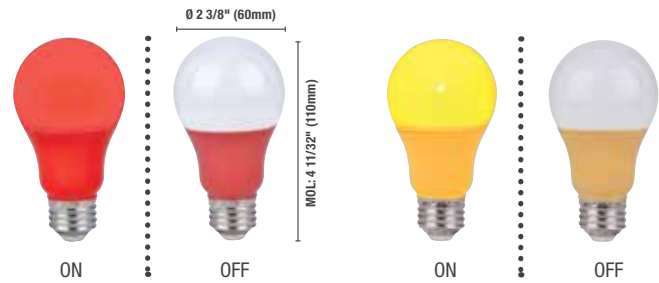
Order code	Description	Watts (W)	Base	Volts (VAC)	Color temp. (K)	Life L70 (hrs)	Lumen output (lm)	Beam angle (°)	Traditional equivalent (W)	Case qty (inner/master)
A19 Omni										
62895	LED/OMNI/10W/D/STD/GRY/AMB	10	E26	120	2 400	25 000	750	215	60	6/48

*Lumen values are derived from photometric testing
For a complete list of compatible dimmers, please visit www.standardpro.com*

6 damp location dimmable 3 yrs warranty cUL US



LED Colored



Red

Yellow

Available in four vibrant colors, these Omni A19 LED lamps will bring life to any decor! They are suitable for multiple applications, such as reception halls, arcades and special events. They are also equipped with a frosted finish that renders a diffused and inviting light.

Colored LED lamps are the perfect solution to create a fun and cheerful setting while being an energy efficient solution.



Green

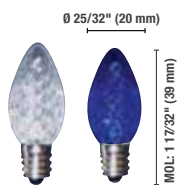
Blue

Order code	Description	Watts (W)	Base	Volts (VAC)	Color	Finish	Life L70 (hrs)	Beam angle (°)	Case qty (inner/master)
A19 Omni									
64652	LED/OMNI/2.5W/RED/ND/STD	2.5	E26	120	Red	Frost	25 000	220	6/48
64653	LED/OMNI/2.5W/YELLOW/ND/STD	2.5	E26	120	Yellow	Frost	25 000	220	6/48
64654	LED/OMNI/2.5W/GREEN/ND/STD	2.5	E26	120	Green	Frost	25 000	220	6/48
64655	LED/OMNI/2.5W/BLUE/ND/STD	2.5	E26	120	Blue	Frost	25 000	220	6/48





LED Decorative



C7



G11



S14 S1



S14 S2

Order code	Description	Watts (W)	Base	Volts (VAC)	Color	No. of diodes	Life L70 (hrs)	Case qty (master)
C7								
59395	LED/C7/R/60M/E12/STD	0.37	E12	100-130	Red	3	60 000	25
59396	LED/C7/A/60M/E12/STD	0.37	E12	100-130	Amber	3	60 000	25
59397	LED/C7/B/60M/E12/STD	0.37	E12	100-130	Blue	3	60 000	25
59398	LED/C7/GR/60M/E12/STD	0.37	E12	100-130	Green	3	60 000	25
59399	LED/C7/CW/60M/E12/STD	0.37	E12	100-130	Cool white	3	60 000	25
59400	LED/C7/WW/60M/E12/STD	0.37	E12	100-130	Warm white	3	60 000	25
G11								
59406	LED/G11/R/60M/E26/STD	0.96	E26	100-130	Red	10	60 000	25
59407	LED/G11/A/60M/E26/STD	0.96	E26	100-130	Amber	10	60 000	25
59408	LED/G11/O/60M/E26/STD	0.96	E26	100-130	Orange	10	60 000	25
59409	LED/G11/B/60M/E26/STD	0.96	E26	100-130	Blue	10	60 000	25
59410	LED/G11/G/60M/E26/STD	0.96	E26	100-130	Green	10	60 000	25
59411	LED/G11/WW/60M/E26/STD	0.96	E26	100-130	Warm white	10	60 000	25
59588	LED/G11/CW/60M/E26/STD	0.96	E26	100-130	Cool white	10	60 000	25
S14								
59412	LED/S14/R/60M/E26/STD	0.96	E26	100-130	Red	10	60 000	25
59413	LED/S14/A/60M/E26/STD	0.96	E26	100-130	Amber	10	60 000	25
59414	LED/S14/O/60M/E26/STD	0.96	E26	100-130	Orange	10	60 000	25
59415	LED/S14/B/60M/E26/STD	0.96	E26	100-130	Blue	10	60 000	25
59416	LED/S14/G/60M/E26/STD	0.96	E26	100-130	Green	10	60 000	25
68849	LED/S14/S2/CW/60M/E26/STD	0.8	E26	100-130	Cool white	5	35 000	25
59418	LED/S14/WW/60M/E26/STD	0.96	E26	100-130	Warm white	10	60 000	25



indoor



wet location



3 yrs warranty





LED String Light and Lamp

These commercial grade decorative LED lamps are an energy efficient, durable, low maintenance solution for all lighting effects. They are perfect for seasonal decorating or for brightening spaces all year round. Consider lighting gardens, trees and fences to create a beautiful and festive display. Available in a variety of brilliant colors and styles, these lamps are safe and cool to the touch.

The LED cord set can connect up to 1 000 LED retrofit lamps on one continuous string set.



Order code	Description	Watts (W)	Base	Volts (VAC)	Color	No. of diodes	Life L70 (hrs)	Case qty (master)
C9								
68842	LED/C9/S2/R/60M/E17/STD	0.58	E17	100-130	Red	3	35 000	500
59402	LED/C9/A/60M/E17/STD	0.45	E17	100-130	Amber	5	60 000	25
68844	LED/C9/S2/B/60M/E17/STD	0.58	E17	100-130	Blue	3	35 000	500
59404	LED/C9/GR/60M/E17/STD	0.45	E17	100-130	Green	5	60 000	25
68846	LED/C9/S2/CW/60M/E17/STD	0.58	E17	100-130	Cool white	3	35 000	500
59337	LED/C9/WW/60M/E17/STD	0.45	E17	100-130	Warm white	5	60 000	25



1 000' String Light (E17)



25' String Light (E17)



25' String Light with lamps



Female Receptacle



Male Plug

Order code	Description	Color	Base	Spacing between sockets		Length		Case qty (master)
				(in.)	(mm)	(ft)	(m)	
String Light								
59606 ¹	E17/1000'SPOOL WITH 12" SPACING/GREEN	Dark green	E17	12	305	1 000	304.8	1
60082	E17/25' CORD 12IN SPACING/GREEN	Dark green	E17	12	305	25	7.62	1
String Light with lamps								
59388 ²	LED/STRING/25L/5 COLOR/STD	Multicolor	-	6 1/2	165	25	7.62	1
Accessories								
60064	LED/FEMALE RECEPT/GREEN/SLIDEON/STD	Dark green	-	-	-	-	-	50
60065	LED/MALE PLUG/GREEN/SLIDEON/STD	Dark green	-	-	-	-	-	50

¹ Does not include male plug and female receptacle
² Does not include the power cord
 Warning: Cutting the spooled cord sets voids CSA rating





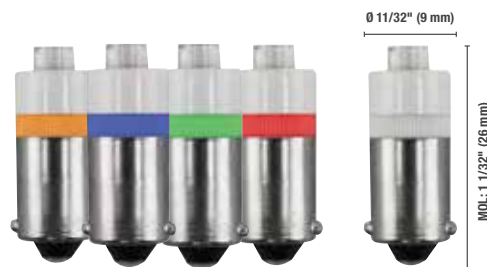
LED Miniature

LED miniature lamps are suitable for such applications as utility displays, industrial equipment, radio and television broadcast equipment, telephone equipment, elevator controls, power plants as well as many others. Long-life, lower power usage, vibration and shock resistance make these LED lamps ideal for any industry. For optimal brightness and saturation, select the LED color closest to the shade of the lens or diffuser the lamp will be used"

- LED lamps come with both a built in resistor and a rectifier diode. This allows for bi-polar function and operates in sockets wired in any polarity
- Up to 90% more energy efficient than incandescent lamps
- Unbreakable
- Wide angle
- Reduced maintenance cost



T-3 1/4 - 7 Cluster

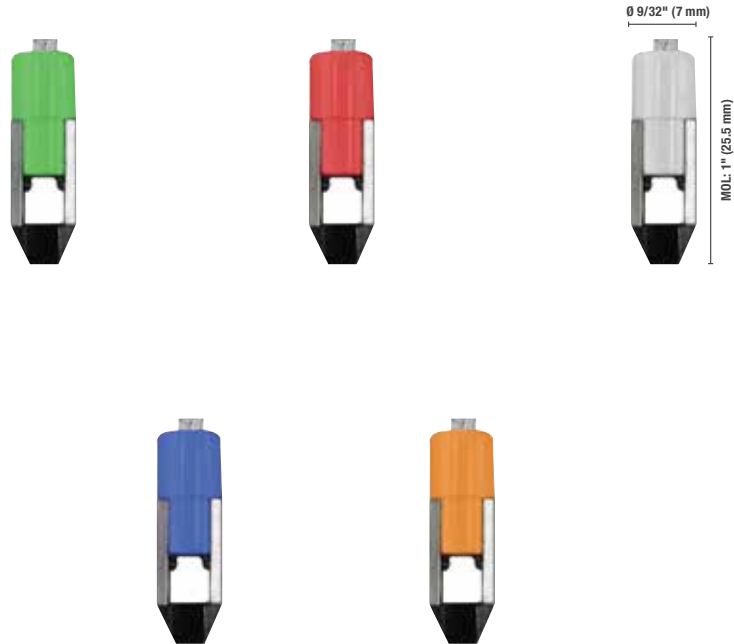


T-3 1/4 - Single chip

Order code	Description	Shape	Base	Volts (VAC)	Color	Life L70 (hrs)
T-3 1/4 - 7 Cluster (24-28 V, 48 V, 120 V)						
62061	LED/WH/T31/4/MB/7CLUSTER/24V-28V	T-3 1/4	Miniature bayonet (BA9s)	24-28	White	100 000
62062	LED/WH/T31/4/7CLUSTER/48V	T-3 1/4	Miniature bayonet (BA9s)	48	White	100 000
62064	LED/B/T31/4/MB/7CLUSTER/120V	T-3 1/4	Miniature bayonet (BA9s)	120	Blue	100 000
62066	LED/R/T31/4/MB/7CLUSTER/120V	T-3 1/4	Miniature bayonet (BA9s)	120	Red	100 000
62067	LED/WH/T31/4/MB/7CLUSTER/120V	T-3 1/4	Miniature bayonet (BA9s)	120	White	100 000
T-3 1/4 - Single chip (6 V, 12-14 V, 24-28 V)						
62028	LED/A/T31/4/MB/6V	T-3 1/4	Miniature bayonet (BA9s)	6	Amber	100 000
62031	LED/B/T31/4/MB/6V	T-3 1/4	Miniature bayonet (BA9s)	6	Blue	100 000
62034	LED/G/T31/4/MB/6V	T-3 1/4	Miniature bayonet (BA9s)	6	Green	100 000
62037	LED/R/T31/4/MB/6V	T-3 1/4	Miniature bayonet (BA9s)	6	Red	100 000
61974	LED/WH/T31/4/MB/6V	T-3 1/4	Miniature bayonet (BA9s)	6	White	100 000
62029	LED/A/T31/4/MB/12V-14V	T-3 1/4	Miniature bayonet (BA9s)	12-14	Amber	100 000
62032	LED/B/T31/4/MB/12V-14V	T-3 1/4	Miniature bayonet (BA9s)	12-14	Blue	100 000
62038	LED/R/T31/4/MB/12V-14V	T-3 1/4	Miniature bayonet (BA9s)	12-14	Red	100 000
62040	LED/WH/T31/4/MB/12V-14V	T-3 1/4	Miniature bayonet (BA9s)	12-14	White	100 000
62030	LED/A/T31/4/MB/24V-28V	T-3 1/4	Miniature bayonet (BA9s)	24-28	Amber	100 000
62033	LED/B/T31/4/MB/24V-28V	T-3 1/4	Miniature bayonet (BA9s)	24-28	Blue	100 000
62036	LED/G/T31/4/MB/24V-28V	T-3 1/4	Miniature bayonet (BA9s)	24-28	Green	100 000
62039	LED/R/T31/4/MB/24V-28V	T-3 1/4	Miniature bayonet (BA9s)	24-28	Red	100 000
61970	LED/WH/T31/4/MB/24V-28V	T-3 1/4	Miniature bayonet (BA9s)	24-28	White	100 000
T-3 1/4 - Single chip (48 V, 60 V, 120 V)						
62047	LED/B/T31/4/MB/48V	T-3 1/4	Miniature bayonet (BA9s)	48	Blue	100 000
62050	LED/G/T31/4/MB/48V	T-3 1/4	Miniature bayonet (BA9s)	48	Green	100 000
62052	LED/R/T31/4MB/48V	T-3 1/4	Miniature bayonet (BA9s)	48	Red	100 000
62055	LED/WH/T31/4MB/48V	T-3 1/4	Miniature bayonet (BA9s)	48	White	100 000
62045	LED/A/T31/4/MB/60V	T-3 1/4	Miniature bayonet (BA9s)	60	Amber	100 000
62048	LED/B/T31/4/MB/60V	T-3 1/4	Miniature bayonet (BA9s)	60	Blue	100 000
62051	LED/G/T31/4/MB/60V	T-3 1/4	Miniature bayonet (BA9s)	60	Green	100 000
62053	LED/R/T31/4/MB/60V	T-3 1/4	Miniature bayonet (BA9s)	60	Red	100 000
62056	LED/WH/T31/4/MB/60V	T-3 1/4	Miniature bayonet (BA9s)	60	White	100 000
62046	LED/A/T31/4/MB/120V	T-3 1/4	Miniature bayonet (BA9s)	120	Amber	100 000
62049	LED/B/T31/4/MB/120V	T-3 1/4	Miniature bayonet (BA9s)	120	Blue	100 000
62024	LED/G/T31/4/MB/120V	T-3 1/4	Miniature bayonet (BA9s)	120	Green	100 000
62054	LED/R/T31/4MB/120V	T-3 1/4	Miniature bayonet (BA9s)	120	Red	100 000
62057	LED/WH/T31/4MB/120V	T-3 1/4	Miniature bayonet (BA9s)	120	White	100 000

*All colors are available upon request





Order code	Description	Shape	Base	Volts (VAC)	Color	Life L70 (hrs)
T-2 - Single chip flat top (6 V, 12 V, 24-28 V)						
62078	LED/A/T2/PSB/6V	T-2	Telephone slide #5	6	Amber	100 000
62081	LED/G/T2/PSB/6V	T-2	Telephone slide #5	6	Green	100 000
62084	LED/R/T2/PSB/6V	T-2	Telephone slide #5	6	Red	100 000
62087	LED/WH/T2/PSB/6V	T-2	Telephone slide #5	6	White	100 000
62079	LED/A/T2/PSB/12V	T-2	Telephone slide #5	12	Amber	100 000
62082	LED/G/T2/PSB/12V	T-2	Telephone slide #5	12	Green	100 000
62088	LED/WH/T2/PSB/12V	T-2	Telephone slide #5	12	White	100 000
62080	LED/A/T2/PSB/24V-28V	T-2	Telephone slide #5	24-28	Amber	100 000
62083	LED/G/T2/PSB/24V-28V	T-2	Telephone slide #5	24-28	Green	100 000
62086	LED/R/T2/PSB/24V-28V	T-2	Telephone slide #5	24-28	Red	100 000
62089	LED/WH/T2/PSB/24V-28V	T-2	Telephone slide #5	24-28	White	100 000
T-2 - Single chip flat top (48 V, 60 V, 120 V)						
62090	LED/B/T2/PSB/48V	T-2	Telephone slide #5	48	Blue	100 000
62093	LED/G/T2/PSB/48V	T-2	Telephone slide #5	48	Green	100 000
62096	LED/R/T2/PSB/48V	T-2	Telephone slide #5	48	Red	100 000
62099	LED/WH/T2/PSB/48V	T-2	Telephone slide #5	48	White	100 000
62091	LED/B/T2/PSB/60V	T-2	Telephone slide #5	60	Blue	100 000
62094	LED/G/T2/PSB/60V	T-2	Telephone slide #5	60	Green	100 000
62097	LED/R/T2/PSB/60V	T-2	Telephone slide #5	60	Red	100 000
62100	LED/WH/T2/PSB/60V	T-2	Telephone slide #5	60	White	100 000
62092	LED/B/T2/PSB/120V	T-2	Telephone slide #5	120	Blue	100 000
62095	LED/G/T2/PSB/120V	T-2	Telephone slide #5	120	Green	100 000
62098	LED/R/T2/PSB/120V	T-2	Telephone slide #5	120	Red	100 000





Order code	Description	Shape	Base	Volts (VAC)	Color	Life L70 (hrs)
T-1 3/4 - Single chip flat top (6 V, 12 V, 28 V)						
62069	LED/A/T13/4/MF/6V	T-1 3/4	Midget Flange F6	6	Amber	100 000
62072	LED/G/T13/4/MF/6V	T-1 3/4	Midget Flange F6	6	Green	100 000
62075	LED/WH/T13/4/MF/6V	T-1 3/4	Midget Flange F6	6	White	100 000
62070	LED/A/T13/4/MF/12V	T-1 3/4	Midget Flange F6	12	Amber	100 000
62073	LED/G/T13/4/MF/12V	T-1 3/4	Midget Flange F6	12	Green	100 000
62076	LED/WH/T13/4/MF/12V	T-1 3/4	Midget Flange F6	12	White	100 000
62071	LED/A/T13/4/MF/28V	T-1 3/4	Midget Flange F6	28	Amber	100 000
62074	LED/G/T13/4/MF/28V	T-1 3/4	Midget Flange F6	28	Green	100 000
62077	LED/WH/T13/4/MF/28V	T-1 3/4	Midget Flange F6	28	White	100 000



Order code	Description	Shape	Base	Volts (VAC)	Color	Life L70 (hrs)
T-1 3/4 - Single chip flat top (6 V, 12 V, 28 V)						
62105	LED/A/T13/4/MG/6V	T-1 3/4	Midget Groove	6	Amber	100 000
62108	LED/G/T13/4/MG/6V	T-1 3/4	Midget Groove	6	Green	100 000
62111	LED/R/T13/4/MG/6V	T-1 3/4	Midget Groove	6	Red	100 000
62102	LED/WH/T13/4/MG/6V	T-1 3/4	Midget Groove	6	White	100 000
62106	LED/A/T13/4/MG/12V	T-1 3/4	Midget Groove	12	Amber	100 000
62109	LED/G/T13/4/MG/12V	T-1 3/4	Midget Groove	12	Green	100 000
62112	LED/R/T13/4/MG/12V	T-1 3/4	Midget Groove	12	Red	100 000
62103	LED/WH/T13/4/MG/12V	T-1 3/4	Midget Groove	12	White	100 000
62107	LED/A/T13/4/MG/28V	T-1 3/4	Midget Groove	28	Amber	100 000
62110	LED/G/T13/4/MG/28V	T-1 3/4	Midget Groove	28	Green	100 000
62113	LED/R/T13/4/MG/28V	T-1 3/4	Midget Groove	28	Red	100 000
62104	LED/WH/T13/4/MG/28V	T-1 3/4	Midget Groove	28	White	100 000



LED - Miniature Lamp



Order code	Description	Shape	Base	Volts (VAC)	Color	Life L70 (hrs)
T-1 3/4 - Single chip flat top (6 V, 12 V, 28 V)						
62114	LED/G/T13/4WB/6V	T-1 3/4	Wedge	6	Green	100 000
62117	LED/R/T13/4WB/6V	T-1 3/4	Wedge	6	Red	100 000
62120	LED/WH/T13/4WB/6V	T-1 3/4	Wedge	6	White	100 000
62115	LED/G/T13/4WB/12V	T-1 3/4	Wedge	12	Green	100 000
62118	LED/R/T13/4WB/12V	T-1 3/4	Wedge	12	Red	100 000
62121	LED/WH/T13/4WB/12V	T-1 3/4	Wedge	12	White	100 000
62116	LED/G/T13/4WB/28V	T-1 3/4	Wedge	28	Green	100 000
62119	LED/R/T13/4WB/28V	T-1 3/4	Wedge	28	Red	100 000
62122	LED/WH/T13/4WB/28V	T-1 3/4	Wedge	28	White	100 000



Order code	Description	Shape	Base	Volts (VAC)	Color	Life L70 (hrs)
T-3 1/4 - Single chip dome top (6 V, 12 V, 28 V)						
62123	LED/A/T31/4/WB/6V	T-3 1/4	Wedge	6	Amber	100 000
62126	LED/G/T31/4/WB/6V	T-3 1/4	Wedge	6	Green	100 000
62132	LED/WH/T31/4/WB/6V	T-3 1/4	Wedge	6	White	100 000
62124	LED/A/T31/4/WB/12V-14V	T-3 1/4	Wedge	12	Amber	100 000
62127	LED/G/T31/4/WB/12V-14V	T-3 1/4	Wedge	12	Green	100 000
62130	LED/R/T31/4/WB/12V-14V	T-3 1/4	Wedge	12	Red	100 000
62133	LED/WH/T31/4/WB/12V-14V	T-3 1/4	Wedge	12	White	100 000
62125	LED/A/T31/4/WB/24V-28V	T-3 1/4	Wedge	24-28	Amber	100 000
62128	LED/G/T31/4/WB/24V-28V	T-3 1/4	Wedge	24-28	Green	100 000
62131	LED/R/T31/4/WB/24V-28V	T-3 1/4	Wedge	24-28	Red	100 000





Order code	Description	Shape	Base	Volts (VAC)	Color	Life L70 (hrs)
------------	-------------	-------	------	-------------	-------	----------------

S6 - 7 Cluster (12-14 V, 28 V)

62151	LED/A/S6/SC/12-14V	S6	Single Contact (BA15s)	12-14	Amber	100 000
62153	LED/G/S6/SC/12-14V	S6	Single Contact (BA15s)	12-14	Green	100 000
62152	LED/A/S6/SC/28V	S6	Single Contact (BA15s)	28	Amber	100 000
62154	LED/G/S6/SC/28V	S6	Single Contact (BA15s)	28	Green	100 000
62156	LED/R/S6/SC/28V	S6	Single Contact (BA15s)	28	Red	100 000

S6 - 7 Cluster (12-14 V, 28 V)

62161	LED/G/S6/DC/12-14V	S6	Double Contact (BA15d)	12-14	Green	100 000
62159	LED/R/S6/DC/12-14V	S6	Double Contact (BA15d)	12-14	Red	100 000
62162	LED/G/S6/DC/28V	S6	Double Contact (BA15d)	28	Green	100 000
62160	LED/R/S6/DC/28V	S6	Double Contact (BA15d)	28	Red	100 000



Order code	Description	Shape	Base	Volts (VAC)	Color	Life L70 (hrs)
------------	-------------	-------	------	-------------	-------	----------------

S6 - 7 Cluster (12-14 V, 28 V)

62135	LED/A/S6/CAND/12-14V	S6	Candelabra (E12)	12-14	Amber	100 000
62143	LED/B/S6/CAND/12-14V	S6	Candelabra (E12)	12-14	Blue	100 000
62139	LED/R/S6/CAND/12V-14V	S6	Candelabra (E12)	12-14	Red	100 000
62136	LED/A/S6/CAND/24V-28V	S6	Candelabra (E12)	24-28	Amber	100 000
62144	LED/B/S6/CAND/24V-28V	S6	Candelabra (E12)	24-28	Blue	100 000
62138	LED/G/S6/CAND/24V-28V	S6	Candelabra (E12)	24-28	Green	100 000
62142	LED/WH/S6/CAND/24V-28V	S6	Candelabra (E12)	24-28	White	100 000

S6 - 7 Cluster (120 V)

62145	LED/A/S6/CAND/120V	S6	Candelabra (E12)	120	Amber	100 000
62146	LED/B/S6/CAND/120V	S6	Candelabra (E12)	120	Blue	100 000
62147	LED/G/S6/CAND/120V	S6	Candelabra (E12)	120	Green	100 000
62148	LED/R/S6/CAND/120V	S6	Candelabra (E12)	120	Red	100 000
62149	LED/WH/S6/CAND/120V	S6	Candelabra (E12)	120	White	100 000



LED Exit Lamp

These LED exit lamp kits minimize energy consumption and maintenance costs compared to their incandescent equivalent, while evenly illuminating both sides of the sign.

- Easy retrofit solution
- Each retrofit kit comes with multiple adapters and adjustable bases



Exit



Metal adapter



Copper adapter

Order code	Description	Shape	Watts (W)	Base	Volts (VAC)	Color	Life L70 (hrs)	Power factor	Case qty (master)
ENS-2000									
27115	LED/Exit/1.2W/E12/STD 2P	U shape	1.2	E12	120	Red	100 000	Normal	120
27116	LED/Exit/1.2W/E12/STD/BULK	U shape	1.2	E12	120	Red	100 000	Normal	500

Kit includes

- 2 lamps E12 candelabra base
- 2 adaptors for E17 intermediate base
- 2 adaptors for DC (BA15d) base

